

# Sky | Tree

APARTMENT



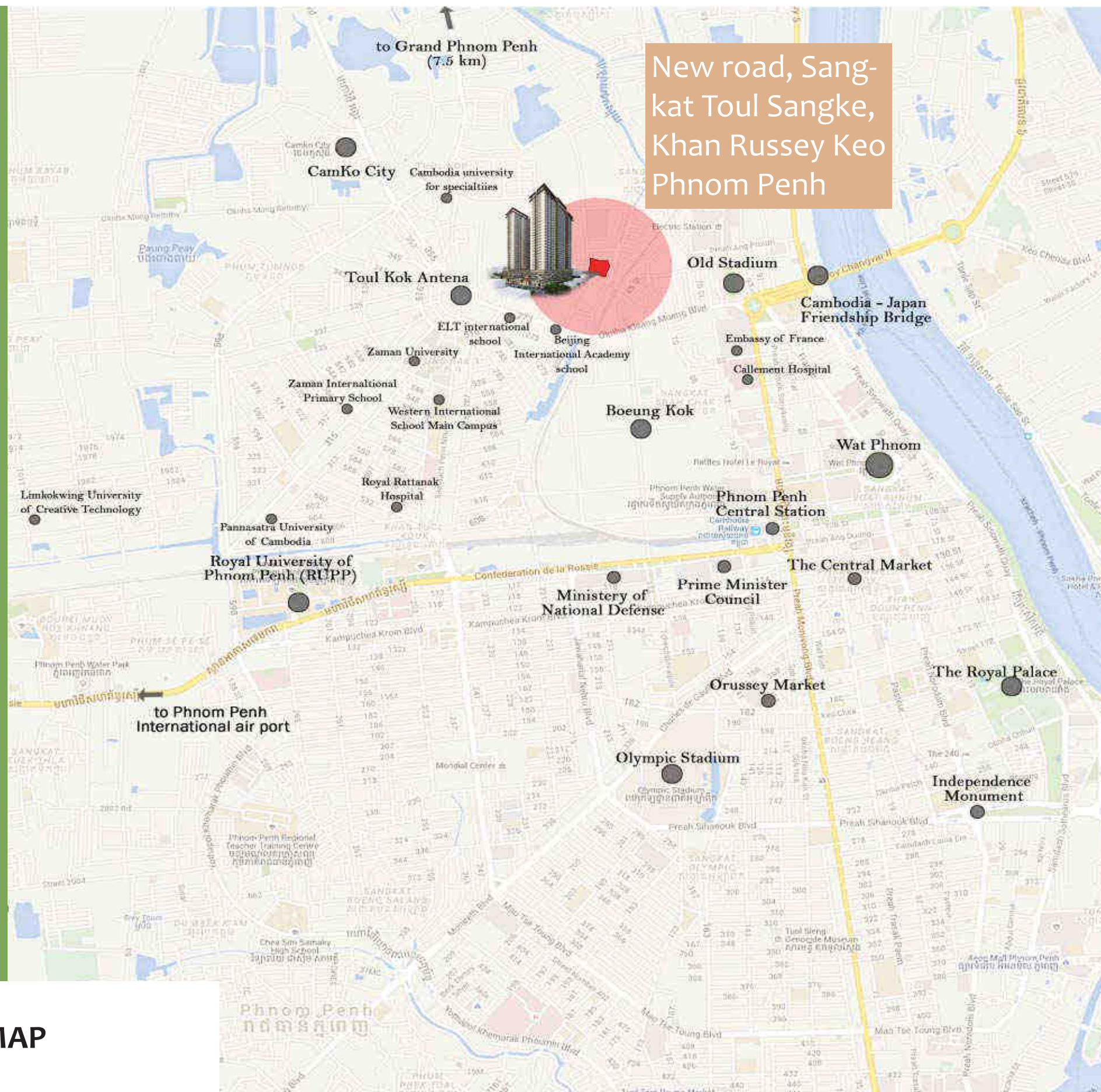
**J & L Property Development Ltd.**

Company Address | 公司地址: A5-8, La Seine, Diamond Island,  
Tonle Bassac Commune, Chamkarmon District, Phnom Penh

+855 (0) 23 933 888

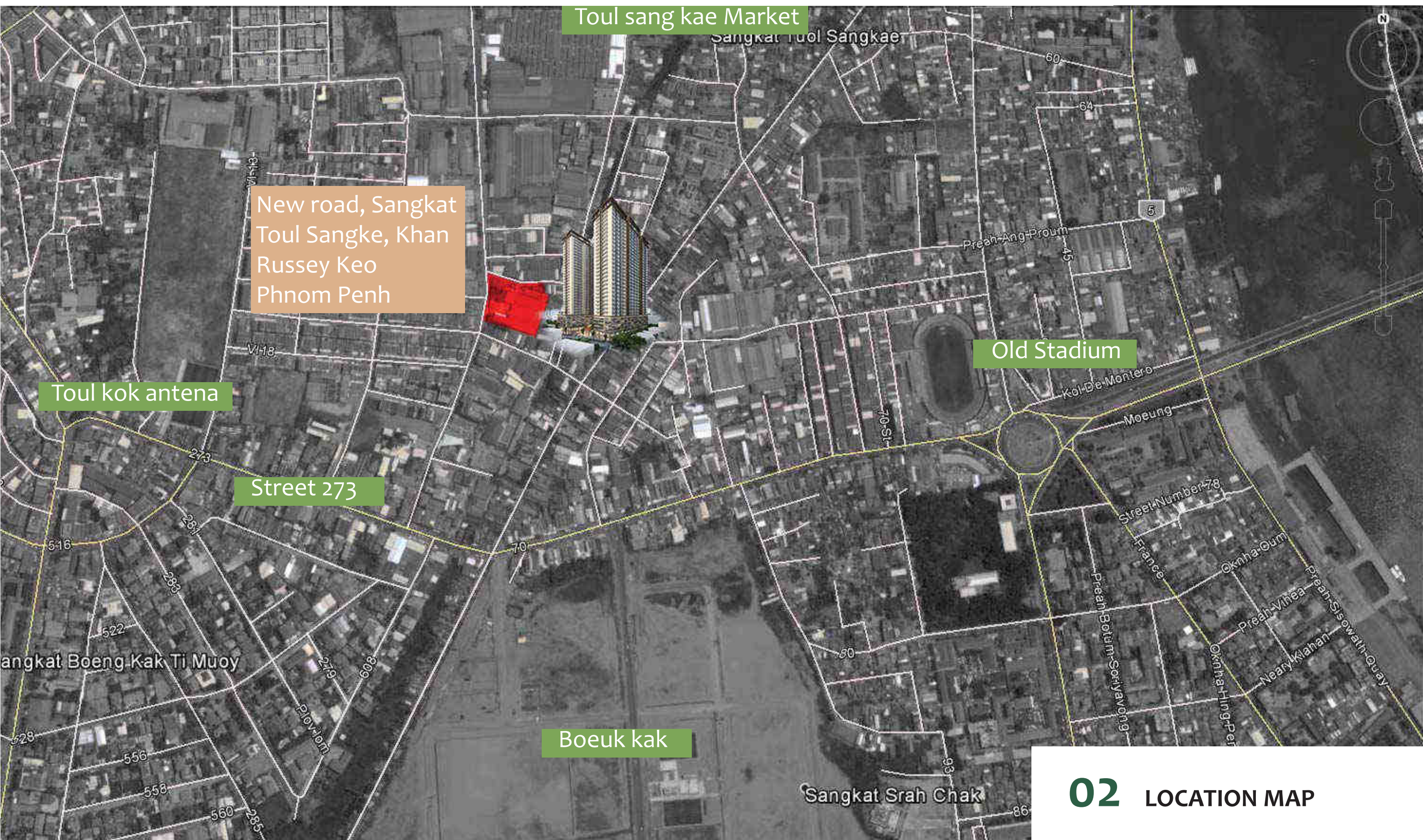






## 01 VICINITY MAP



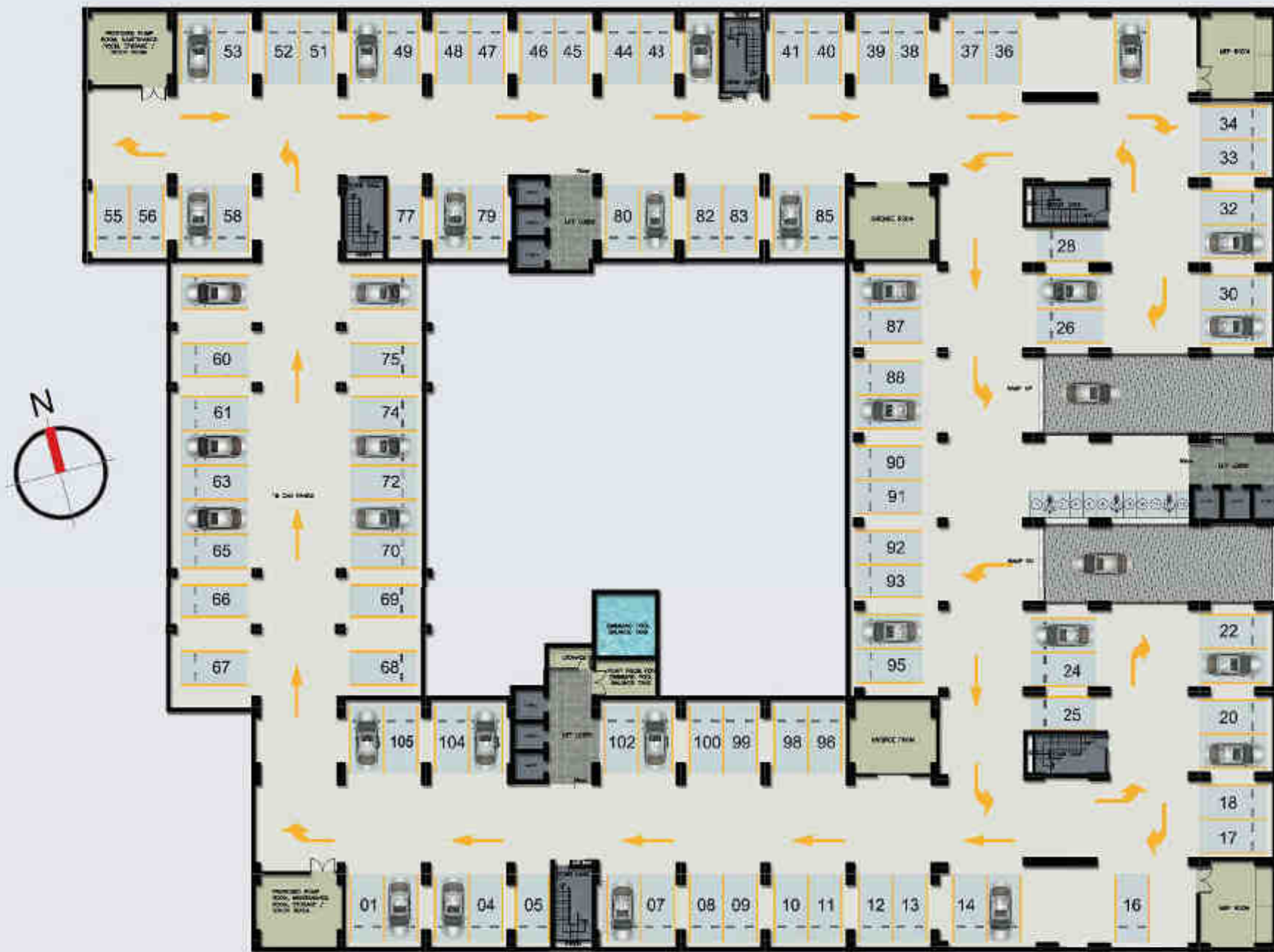




# 03 SITE DEVELOPMENT PLAN







## 04 BASEMENT FLOOR PLAN (Car park layout)



**NOTE:**

- 1/ Reception Lobby
- 2/ Restaurant ( Rental space)
- 3/ Service Apartment Lobby
- 4/ Spa and Massage
- 5/ Gym
- 6/ Swimming Pool
- 7/ Outdoor Playground
- 8/ Garden
- 9/ Performance Room (Theatre and Piano)
- 10/ Library
- 11/ Indoor Playground
- 12/ Table Tennis Room
- 13/ Clinic
- 14/ Laundry
- 15/ Security Room/Tel/CCTV/Camera
- 16/ Admin Office
- 17/ Bank
- 18/ Commercial ( Rental space )
- 19/ Outdoor Parking







**06** MEZZANINE FLOOR PLAN  
( Car park layout )



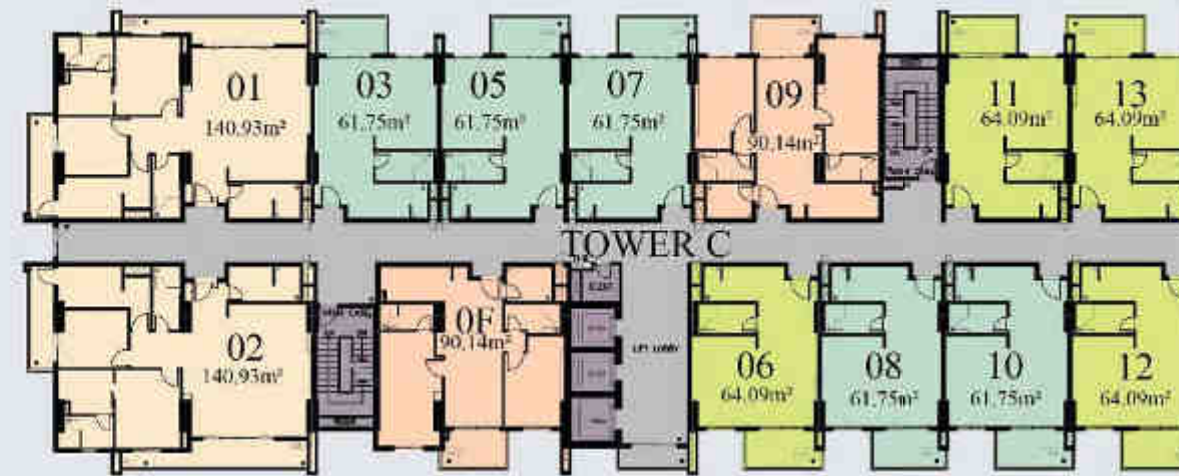
**07** 1st-4th FLOOR PLAN  
( Car park layout )



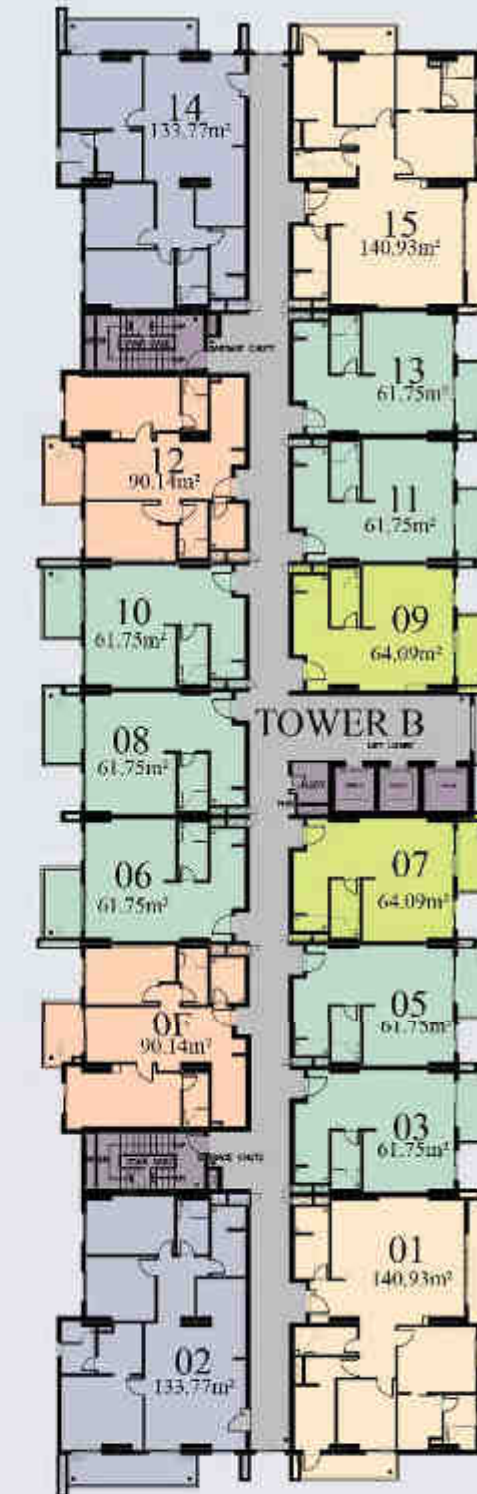
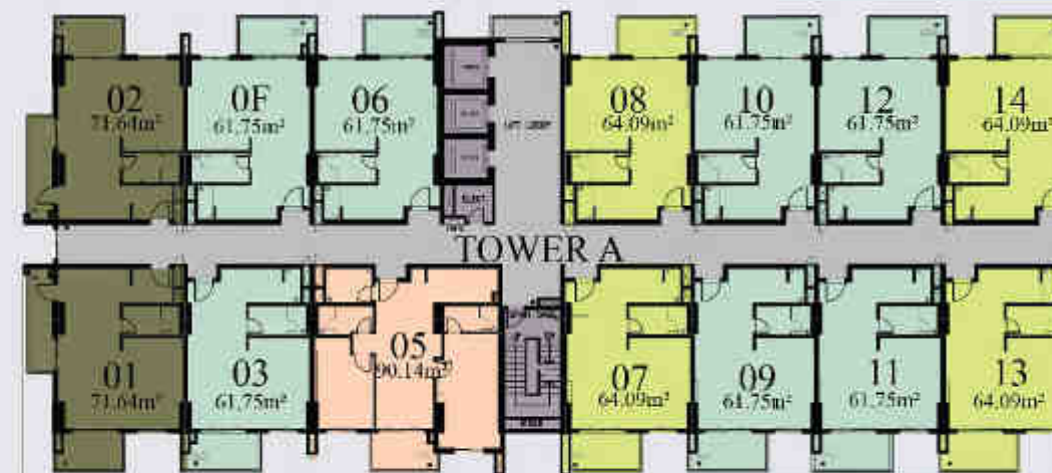


**08** 05th FLOOR PLAN  
( Luxury Residential Units )





- 1 Bed room Type A: 61.75m<sup>2</sup>
- 1 Bed room Type B: 71.64m<sup>2</sup>
- 1 Bed room Type C: 64.09m<sup>2</sup>
- 2 Bed room Type A: 90.14m<sup>2</sup>
- 3 Bed room Type B: 140.93m<sup>2</sup>
- 3 Bed room Type C: 133.77m<sup>2</sup>



## 09 06th-21st FLOOR PLAN (Luxury Residential Units)





## 10 22nd-31st FLOOR PLAN ( Luxury Residential Units )





**11** ROOF DECK PLAN  
( Roof Garden connected with Sky Bridge )



---

**ENVIRONMENT  
FRIENDLY  
DESIGN**

---



**12** MAIN ENTRANCE





Skytree Apartment consist of three towers,  
32-story residential building with 1104 residential  
units.

- Tower A : 378 Units
- Tower B : 405 Units
- Tower C : 321 Units



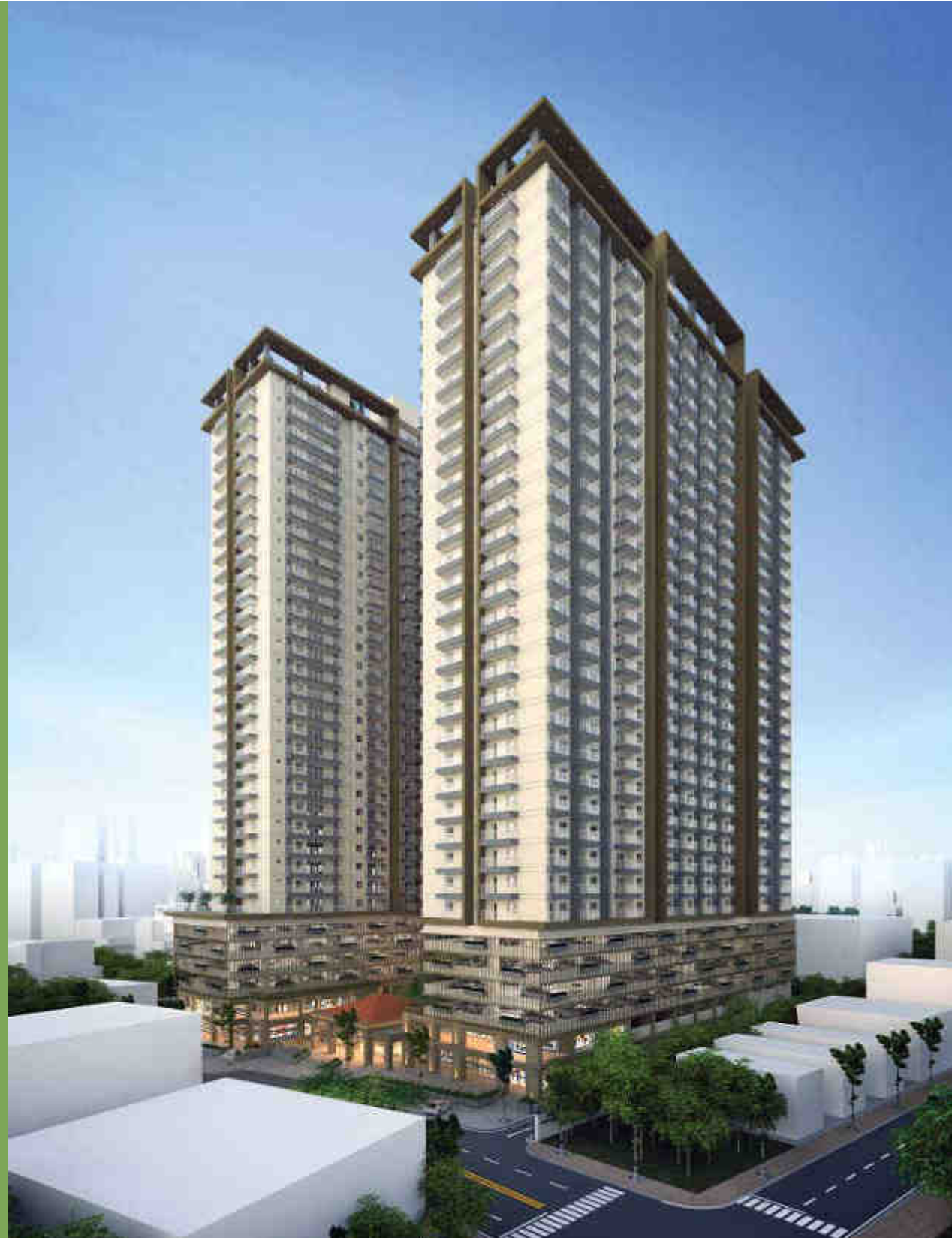
• Amenities :

- Reception Lobby/  
Waiting Lounge
- Swimming Pool
- Cafe | Restaurant
- Multi-purpose Hall
- Parks & Sky Garden
- Parkings Spaces
- Fitness Gym
- Kids Indoor Playground
- Performance Hall
- Library



**14** STREET PERSPECTIVE VIEW 2





15 STREET PERSPECTIVE VIEW 3





**16** STREET PERSPECTIVE REAR VIEW



## ROOF GARDEN



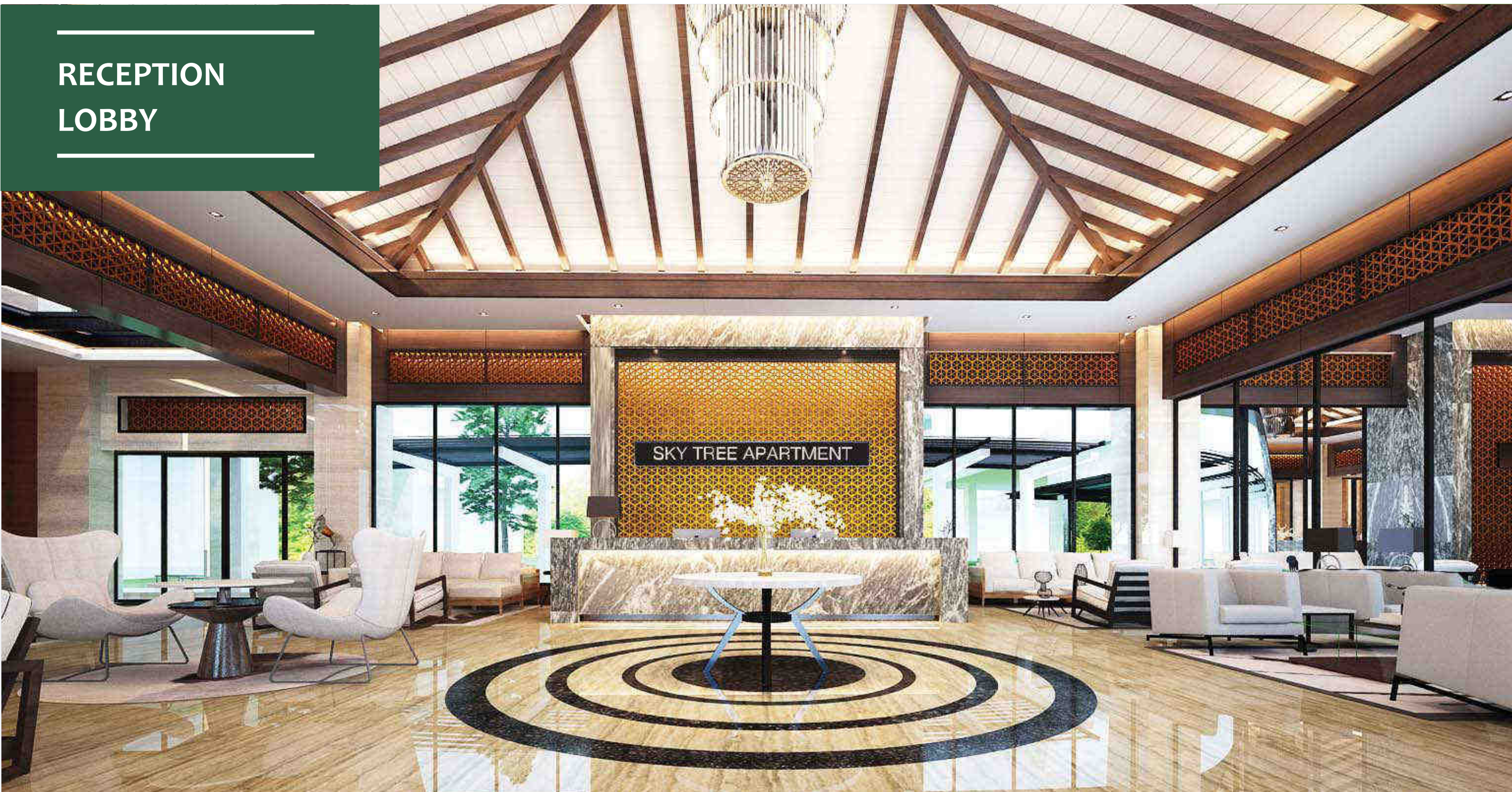




**18** AERIAL PERSPECTIVE VIEW 2



## RECEPTION LOBBY

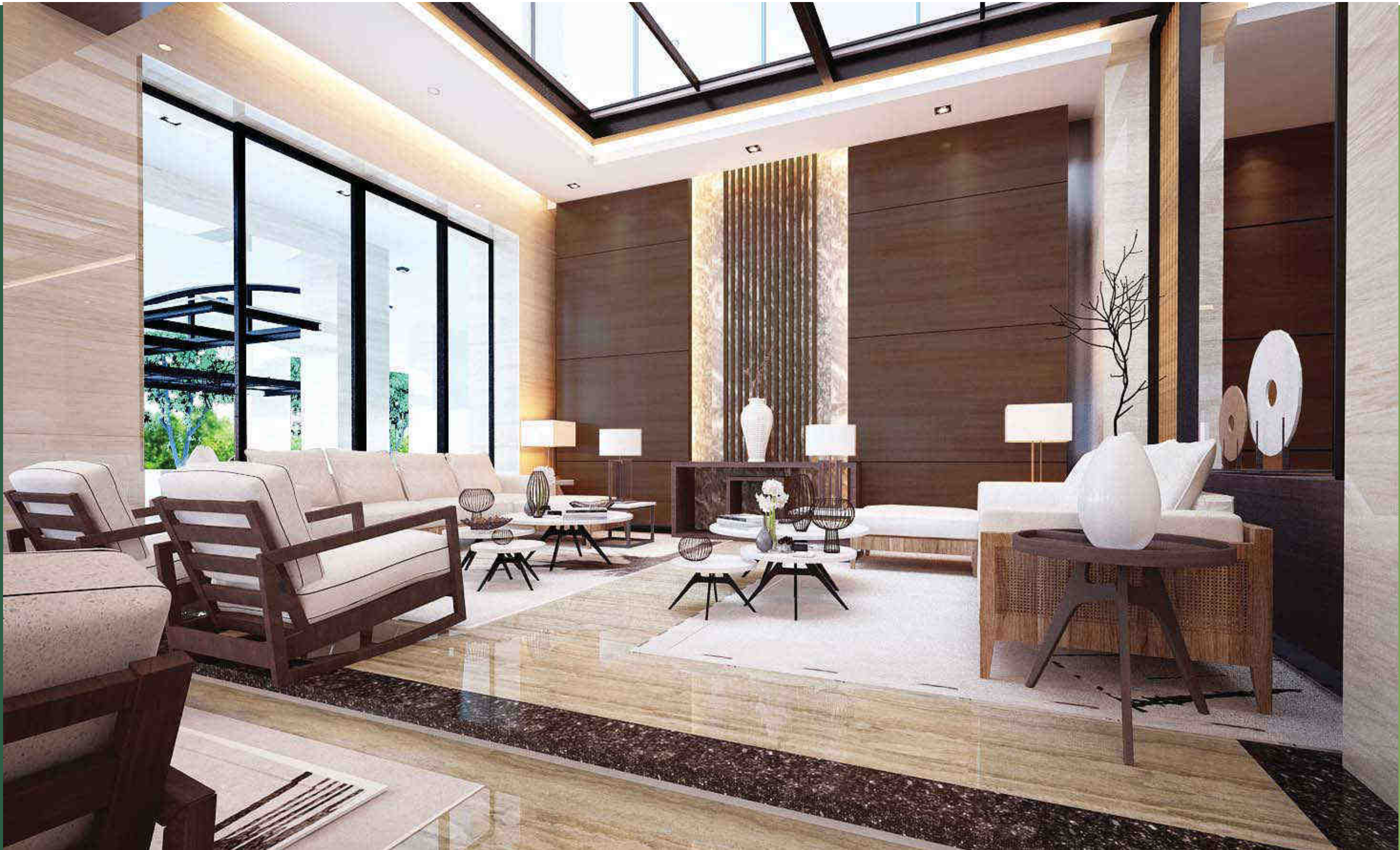






**20** RECEPTION BUILDING INTERIOR LOBBY VIEW 2





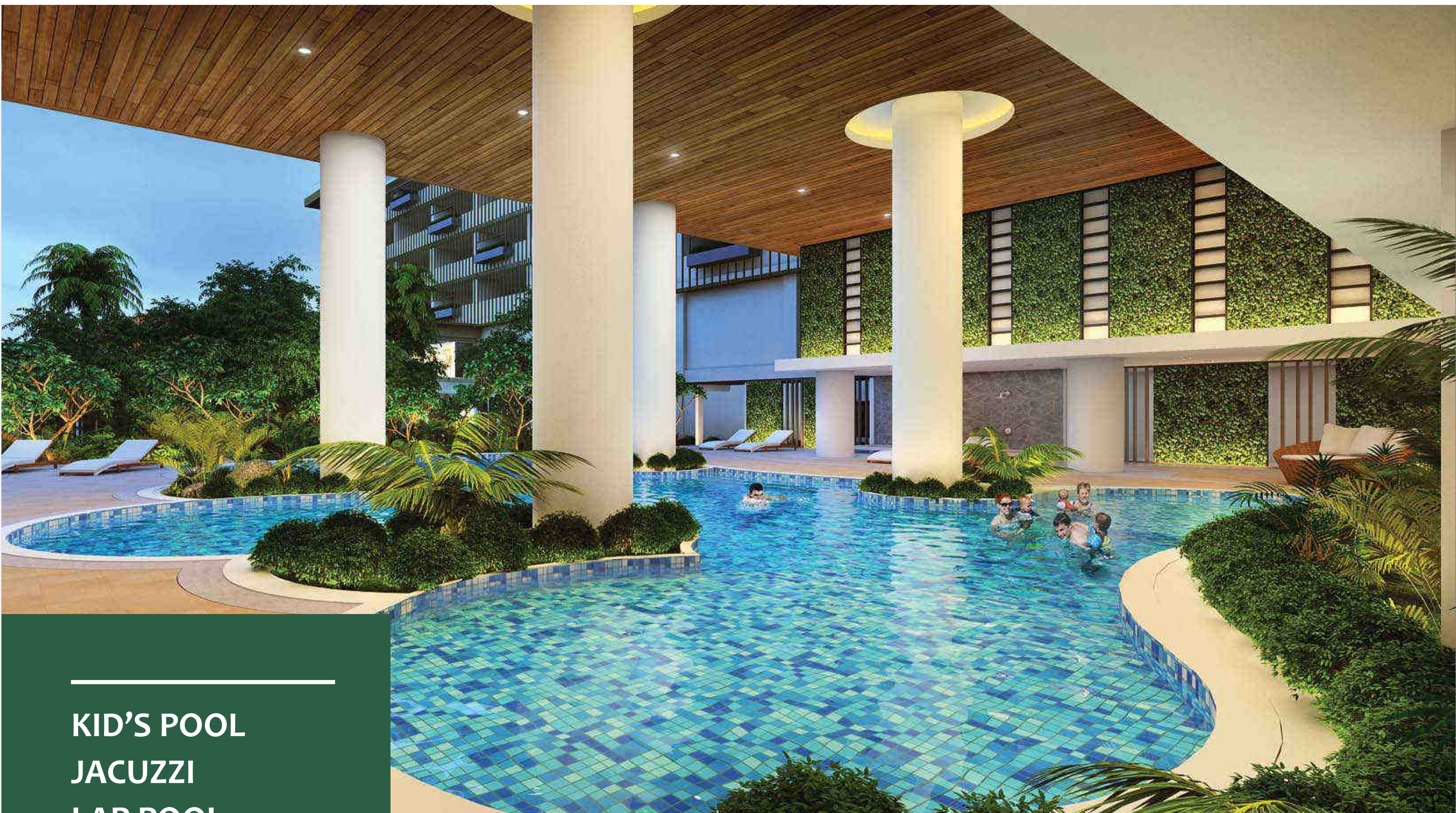
**21** RECEPTION BUILDING WAITING AREA





**22** CENTRAL GARDEN (MINI RAIN FOREST)





---

KID'S POOL  
JACUZZI  
LAP POOL

---

23 SWIMMING POOL VIEW 1



THE SWIMMING  
POOL WITH LUSH  
GREENERIES AND  
WARM ENVIRONMENT  
TO EXPERIENCE  
COMFORT AND HIGH  
STANDARD OF LIVING.











**26** RESIDENTIAL UNIT LIFT LOBBY



---

ORGANIC  
DESIGN  
NATURAL  
SKY GARDEN

---



27 SKY GARDEN VIEW 1









#### GARDEN LANDSCAPE

- 360 View of Phnom Penh City Skyline
- Cozy Outdoor Seating









## FITNESS GYM

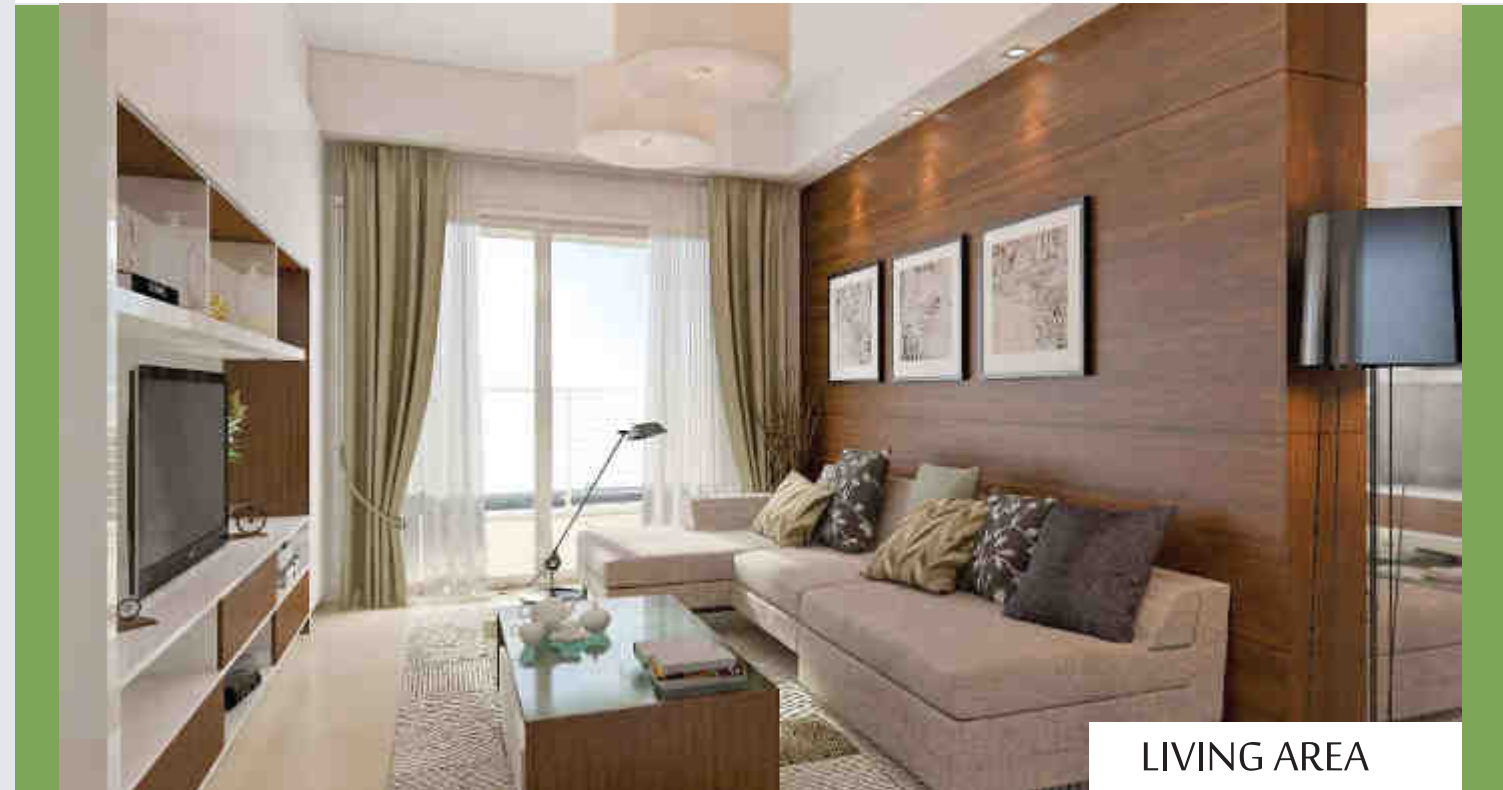




## 32 1 BEDROOM UNIT TYPE A



FLOOR PLAN 61.75 sqm



LIVING AREA



KITCHEN



# 33 1 BEDROOM UNIT TYPE B



DINING + LIVING AREA



SHOWER ROOM



FLOOR PLAN 71.64 sqm



## 34 1 BEDROOM UNIT TYPE C



BEDROOM

FLOOR PLAN 64.09 sqm



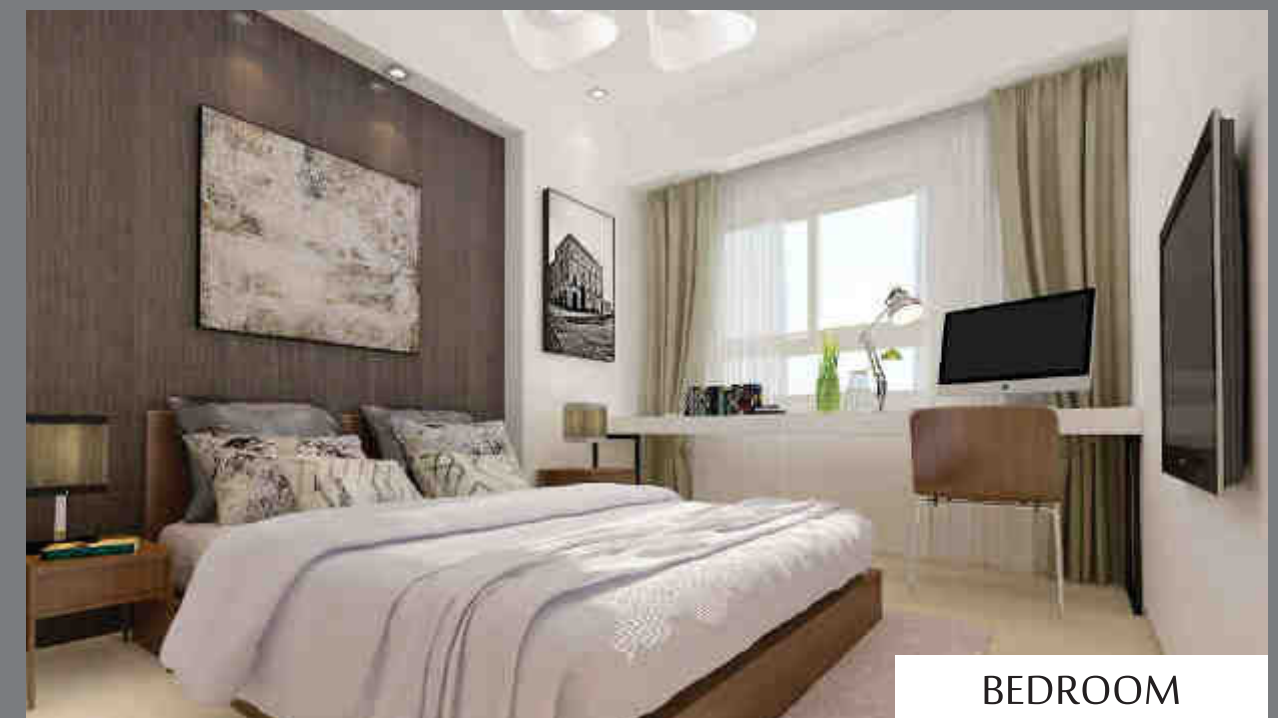
# 35 2 BEDROOM UNIT TYPE A



FLOOR PLAN 90.14 sqm



LIVING AREA



BEDROOM



# 36 2 BEDROOM UNIT TYPE A



DINING AREA



KITCHEN



MASTER BEDROOM



# 37 3 BEDROOM UNIT TYPE A



FLOOR PLAN 133.25 sqm



# 38 3 BEDROOM UNIT TYPE A





# 39 3 BEDROOM UNIT TYPE B



FLOOR PLAN 140.93 sqm



## 40 3 BEDROOM UNIT TYPE B



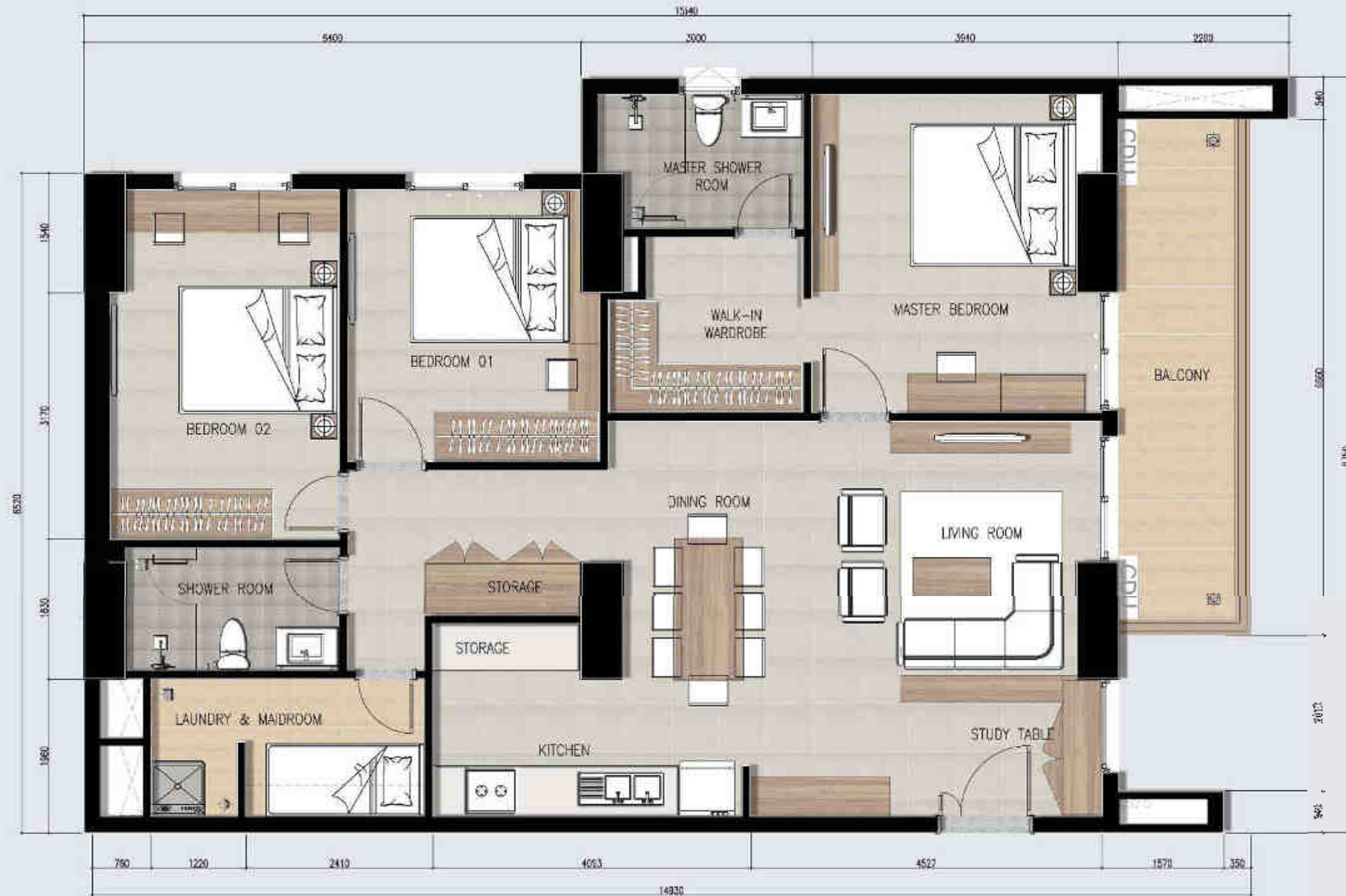
BEDROOM



KITCHEN



# 41 3 BEDROOM UNIT TYPE C



FLOOR PLAN 133.77 sqm



## 42 3 BEDROOM UNIT TYPE C





Skytree Apartment Unit Area Summary:

Total Units = 1104 Units

Tower A	Tower B	Tower C
1BR Type A- 61.75m <sup>2</sup> = 189 Units	1BR Type A- 61.75m <sup>2</sup> = 189 Units	1BR Type A- 61.75m <sup>2</sup> = 95 Units
1BR Type B- 71.64m <sup>2</sup> = 54 Units	1BR Type C- 64.09m <sup>2</sup> = 54 Units	1BR Type C- 64.09m <sup>2</sup> = 78 Units
1BR Type C- 64.09m <sup>2</sup> = 108 Units	2BR Type A- 90.14m <sup>2</sup> = 54 Units	2BR Type A- 90.14m <sup>2</sup> = 74 Units
2BR Type A- 90.14m <sup>2</sup> = 27 Units	3BR Type B- 140.93m <sup>2</sup> = 54 Units	3BR Type A- 133.25m <sup>2</sup> = 20 Units
	3BR Type C- 133.77m <sup>2</sup> = 54 Units	3BR Type B- 140.93m <sup>2</sup> = 54 Units
Sub Total = 378 Units	Sub Total = 405 Units	Sub Total = 321 Units

Tower A+B+C	Tower A Selling unit	Tower C Selling unit
1BR Type A- 61.75m <sup>2</sup> = 473 Units	Area per floor = 922.03m <sup>2</sup>	Area per floor = 1,027.25m <sup>2</sup>
1BR Type B- 71.64m <sup>2</sup> = 54 Units	Total area A = 24,894.81m <sup>2</sup>	Total area 5-21st = 17,463.25m <sup>2</sup>
1BR Type C- 64.09m <sup>2</sup> = 240 Units	<b>Tower B Selling unit</b>	Area per floor = 1,034.76m <sup>2</sup>
2BR Type A- 90.14m <sup>2</sup> = 155 Units	Area per floor = 1,290.11m <sup>2</sup>	Total area 22-31st = 1,0347.60m <sup>2</sup>
3BR Type A- 133.25m <sup>2</sup> = 20 Units	Total area B = 34,832.97m <sup>2</sup>	Total Area C = 27,810.85m <sup>2</sup>
3BR Type B- 140.93m <sup>2</sup> = 108 Units		<b>Tower Selling unit = 87,538.63m<sup>2</sup></b>
3BR Type C- 133.77m <sup>2</sup> = 54 Units		
<b>Total Units: 1104 Units</b>		

Skytree Apartment Area Calculation:

Total Area of the land = 8,649.67m<sup>2</sup>

Total Area of the Building :

-Basement Floor = 4,946.82m<sup>2</sup>

-Ground Floor = 4,685.11m<sup>2</sup>

-Mezzanine Floor = 4,452.96m<sup>2</sup>

-1-4 Car Parking  
(4,399.65m<sup>2</sup> x 4) = 17,598.60m<sup>2</sup>

- 5th floor = 5,040.71m<sup>2</sup>

-6th-21st floor  
(3,971.24 x 16) = 63,539.84m<sup>2</sup>

-22nd floor = 4,007.00m<sup>2</sup>

-23rd-31st floor  
(3,981.55 x 9) = 35,833.95m<sup>2</sup>

-Roof Deck = 418.94m<sup>2</sup>

-Roof Top = 1,879.04m<sup>2</sup>

**Total area = 142,402.97m<sup>2</sup>**

Total Sale able Area :

1BR Type A- 61.75m<sup>2</sup> x 473 Units = 29,207.75m<sup>2</sup>

1BR Type B- 71.64m<sup>2</sup> x 54 Units = 3,868.56m<sup>2</sup>

1BR Type C- 64.09m<sup>2</sup> x 240 Units = 15,381.60m<sup>2</sup>

2BR Type A- 90.14m<sup>2</sup> x 155 Units = 13,971.70m<sup>2</sup>

3BR Type A- 133.25m<sup>2</sup> x 20 Units = 2,665.00m<sup>2</sup>

3BR Type B- 140.93m<sup>2</sup> x 108 Units = 15,220.44m<sup>2</sup>

3BR Type C- 133.77m<sup>2</sup> x 54 Units = 7,223.58m<sup>2</sup>

**Total area = 87,538.63m<sup>2</sup>**