



Templestowe Lower 23 Ranleigh Rise



Hamilton Finley



Templestowe Lower 23 Ranleigh Rise

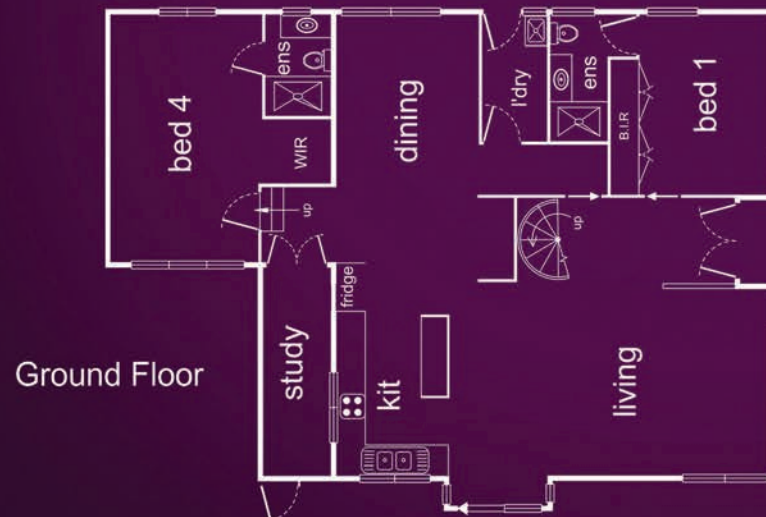
4 3 2

Hidden away in leafy quiet court location in Lower Templestowe, you can listen to the serenade of chorus from the parade of birdlife while you appreciate the elevated rural views. It is difficult to describe the presentation and unique design features that are offered with this 4 bedroom home. There are 2 large bedrooms with en-suite bathrooms downstairs, and a further two upstairs bedrooms that share the well appointed bathroom. The kitchen is a delight with superb appointments and ample bench space for food preparation abutting a spacious separate familyroom. The formal lounge/ dining room blends and flows beautifully in the balance of this home. There are quality floor coverings, light-fittings and window furnishings thru-out with reverse-cycle air-con.

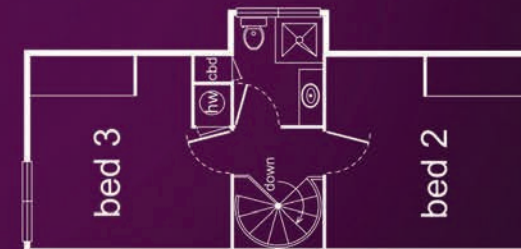
此間位在Templestowe Lower的四睡房大宅，座落在寧靜街區的高地上，可以遠眺東方美麗的山脈。和諧融洽的街坊鄰舍是您有錢也買不到的安心。走進屋內，開闊、明亮、挑高的廳堂設計，帶給您滿滿的現代設計感，樓下有兩間寬敞主人房，全帶衛浴設備。另有獨立的飯廳和讀書間。走進到廚房所見的是高檔的歐式廚具和大器華麗的廚櫃。爬上旋轉樓梯來到樓上的另兩間睡房，同時有一間共用的浴室。屋外後院小丘是您遠離塵囂最佳的心靈沈澱之處。整個屋況極佳，座向優良，空間寬闊，採光明亮。十五分鐘步行即可到達Templestowe 小學和中學、Macedon Square購物中心和公車站、附近還有大片綠地和網球場。此地地理位置集教育、交通、自住品質於一身。

Bob Wright
0425 740 866
bob@hamiltonfinley.com.au

Andrew Shen
0410 108 000
andrew@hamiltonfinley.com.au



First Floor



DISCLAIMER: Every precaution has been taken to verify the accuracy of the above details. The information provided in this document is believed to be accurate at the date of printing, but is to be used as a guide only. No information in this document is to be relied on for legal or financial purposes. It is prospective purchaser's responsibility to obtain independent, professional advice to verify the matters advertised. Hamilton Finley gives no warranty to the above and expressly disclaims all liability for any loss or damage, whatever the cause which may arise from any person acting on any such statements. © Copyright Hamilton Finley Pty Ltd

