



Luschwitz
REAL ESTATE

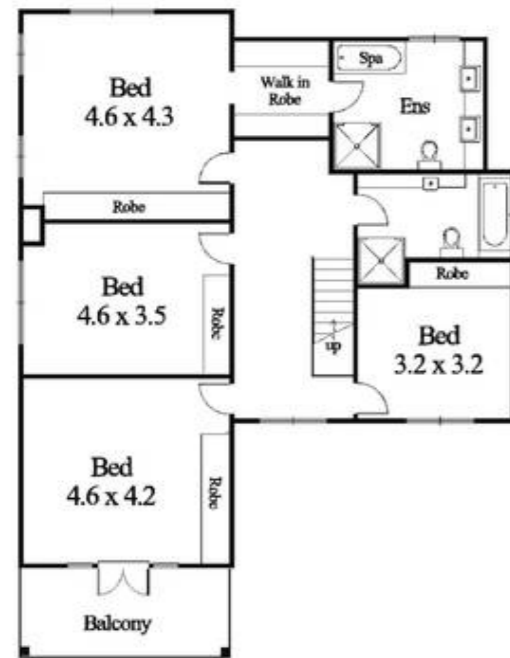
Modern Architect Designed Residence Quality Full Brick Construction & Finishes

**6 Rushall Street
PYMBLE**

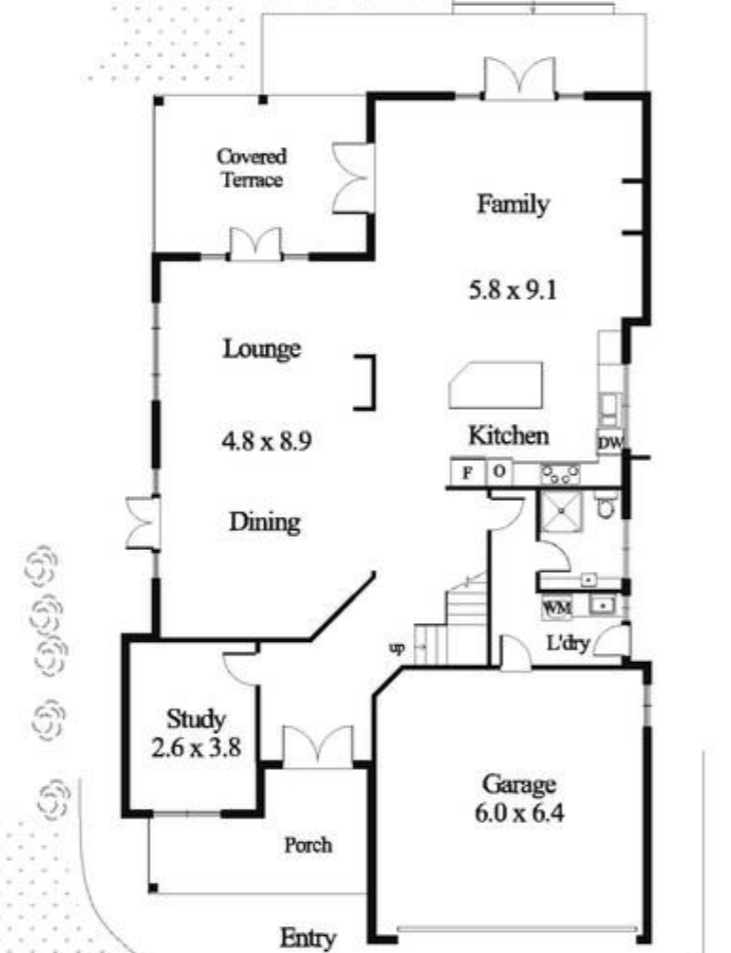
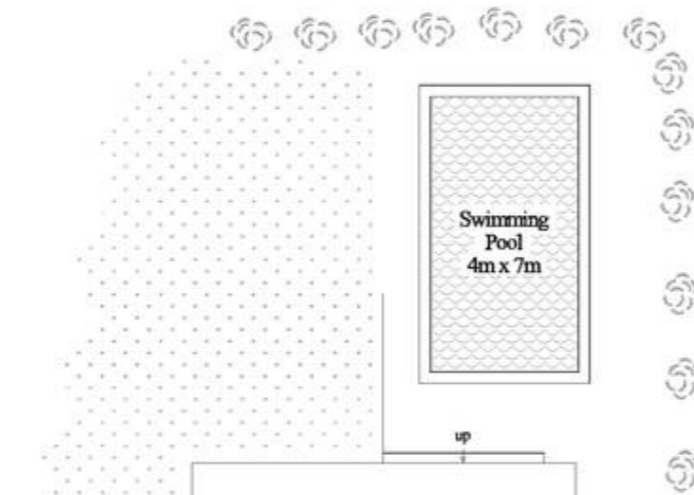
View
Sat & Wed 11 - 11:30am

4 3 2

Auction
Unless sold prior



FIRST FLOOR



GROUND FLOOR

6 Rushall Street, Pymble



Josh Luschwitz 0412 067 676 josh@luschwitz.com.au
Sue Hodges 0423 732 487 sue@luschwitz.com.au

Architect designed and quality built, this stylish, spacious and modern home is nestled on a quiet, level block in East side Pymble. Exceptional attention to detail can be found throughout from the quality finishes to the full brick and concrete slab construction. The free flowing floor plan includes a stunning open plan kitchen, spacious family room plus a separate formal lounge and dining all opening to alfresco entertaining, level lawns and established gardens.

Accommodation consists of 4 generous bedrooms (main with ensuite and walk-in) plus a separate study downstairs and 3 modern bathrooms. Further features include a sunny, private pool, double garaging with great storage and internal access, r/c air-conditioning, gas fire place and electric gates.

The convenient location, close to Pymble Public School, Pymble train station and Pymble Ladies College, allows easy access to transport, schools and local amenities such as St Ives Shopping Village.

If you are looking for a home ready to move into and enjoy for the Summer this is the perfect opportunity.

