

Dingle Partners

| Estate Agents
| Sales
| Property Management
| Project Management
| Consultants

25/17-21 Blackwood Street, North Melbourne

2  **1**  **2** 



Additional Information

- Remote Garage
- Split system heating and cooling
- Convenience of abundant amenities
- Secure 2-Lot Parking

Rates:

Water Rates - \$615.88 per annum approx.
Council Rates - \$1,267.82 per annum approx.
Body Corp - \$3519 per annum approx.

Chattels:

All fixed floor coverings, electric light fittings and fixtures, window furnishings

Preferred Settlement:

30/60/90 days – 10% deposit

Rental Appraisal Price:

\$390 - \$430 per week

Schools:

University of Melbourne	950 m
North Melbourne Primary School	1 km
The University High School	1.5 km
Simonds Catholic College	1 km

Public Transportation:

Tram: Flemington Road / Peel Street	750 m
Bus: Dowling Place / Wreckyn Street	210 m

Other Amenities

Queen Victoria Market	780 m
Royal Park	920 m
Flagstaff Gardens	1.07 km
Marvel Stadium	1.7 km

AUCTION 4th JUNE AT 2.00 PM

CONTACT MALCOLM DINGLE 0418 333 489
JAY DOMINGO 0436 697 582

Dingle Partners Pty Ltd. ABN: 67 099 681 188 Tel: 61 3 9614 6688 Fax: 61 3 9629 8811 www.dinglepartners.com.au

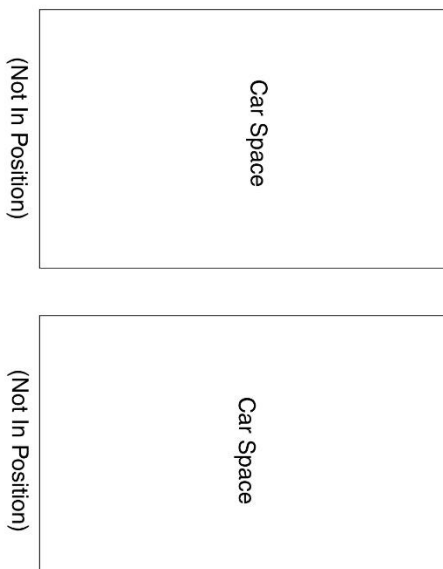
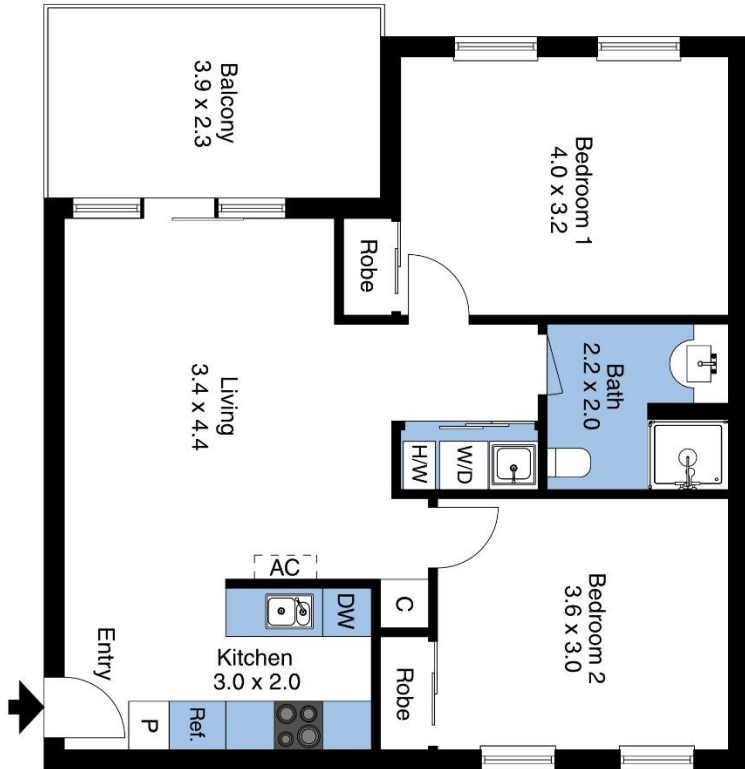
Directors: Malcolm Dingle FREI AAPI, Robert Eggers AREI, CEA (REIV), Paul Harberts BEng

• **Head Office:** 39 Queen Street, Melbourne VIC 3000 • Carlton • Richmond • St Kilda Rd

Dingle Partners

- | Estate Agents
- | Sales
- | Property Management
- | Project Management
- | Consultants

Dingle Partners



The floor plan is not to scale; measurements are indicative and in metres. Entrance elements are not in position. Plans should not be relied on. Interested parties should make and rely on their own enquiries.

Produced by DIAKRIT