

[brusenewhomes.com.au](http://brusenewhomes.com.au)



---

## NEWTON

25 Heggaton Terrace



Theon Bruse  
[theon.bruse@bruse.com.au](mailto:theon.bruse@bruse.com.au)  
0419 816 470



Toby Shipway  
[toby.shipway@bruse.com.au](mailto:toby.shipway@bruse.com.au)  
0413 600 919  
357 Greenhill Road  
Toorak Gardens SA 5065  
RLA 181689

Bespoke architectural designs and interior design.

**BRUSE**  
REAL ESTATE



NOTE: THIS PLAN/DOCUMENT IS FOR ILLUSTRATION PURPOSES ONLY. ALL DIMENSIONS ARE APPROXIMATE. WHILE EVERY ENDEAVOUR HAS BEEN MADE TO VERIFY THE CORRECT DETAILS NEITHER THE VENDOR, THE AGENT, NOR THE DESIGNER ACCEPT LIABILITY FOR ERROR OR OMISSION.

# LOCATION

**BRUSE**  
REAL ESTATE



**Newton Village Shopping Centre - 1.9km**

**Stradbroke School - 1.7km**

**Charles Campbell College - 1.6km**

**Thorndon Park Reserve - 2.0km**

**Adelaide CBD - 9.1 km**

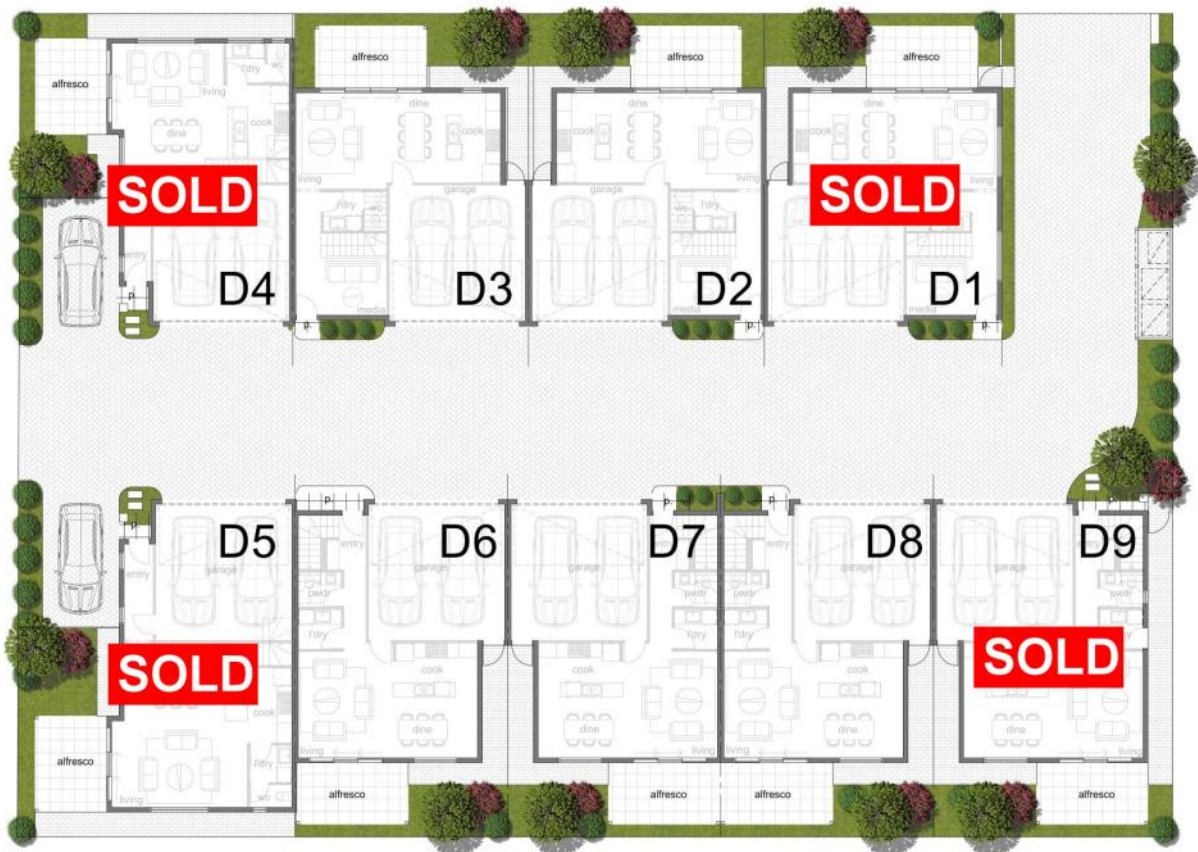
**Nearest bus stop - 205m**

NOTE: THIS PLAN/DOCUMENT IS FOR ILLUSTRATION PURPOSES ONLY. ALL DIMENSIONS ARE APPROXIMATE. WHILE EVERY ENDEAVOUR HAS BEEN MADE TO VERIFY THE CORRECT DETAILS NEITHER THE VENDOR, THE AGENT, NOR THE DESIGNER ACCEPT LIABILITY FOR ERROR OR OMISSION.

# Site Plan

**BRUSE**  
REAL ESTATE

## 25 Heggarton Terrace | NEWTON

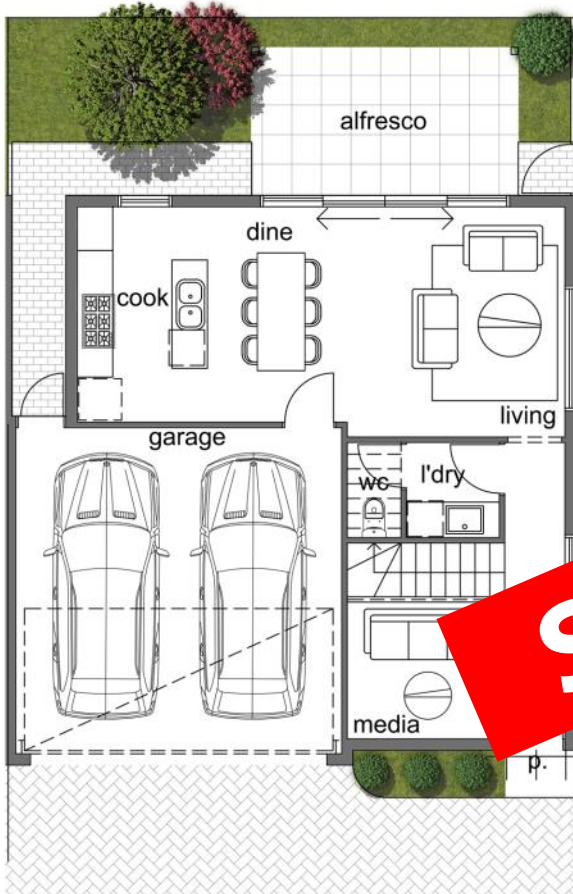


**WP**  
PROPERTY  
GROUP

NOTE: THIS PLAN/DOCUMENT IS FOR ILLUSTRATION PURPOSES ONLY. ALL DIMENSIONS ARE APPROXIMATE. WHILE EVERY ENDEAVOUR HAS BEEN MADE TO VERIFY THE CORRECT DETAILS NEITHER THE VENDOR, THE AGENT, NOR THE DESIGNER ACCEPT LIABILITY FOR ERROR OR OMISSION.

# Residence 1

**BRUSE**  
REAL ESTATE



1m 0 1m 2m 3m 4m 5m



## AREAS

LOWER LIVING	56.0
UPPER LIVING	89.0
GARAGE	34.0
ALFRESCO & PORCH	12.0
<b>TOTAL</b>	<b>191.0</b>

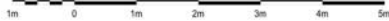
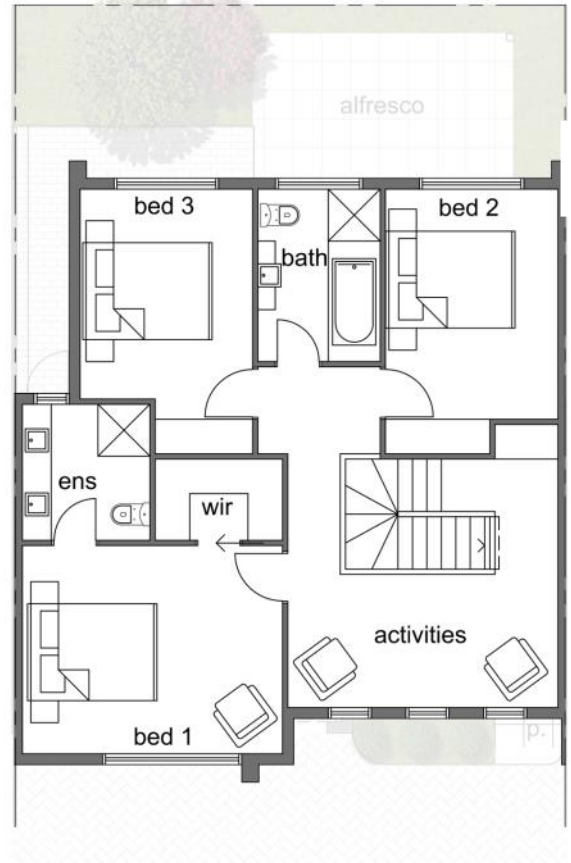
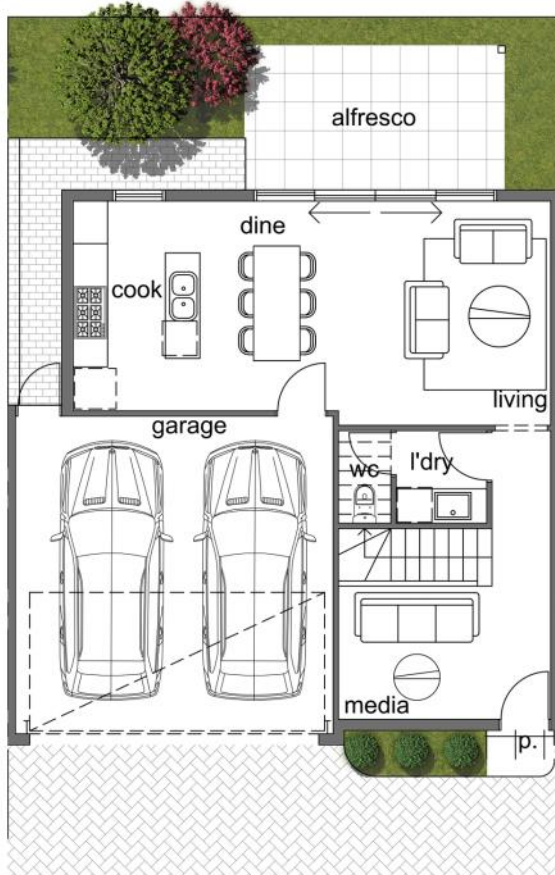


**Priced at** **SOLD**

NOTE: THIS PLAN/DOCUMENT IS FOR ILLUSTRATION PURPOSES ONLY. ALL DIMENSIONS ARE APPROXIMATE. WHILE EVERY ENDEAVOUR HAS BEEN MADE TO VERIFY THE CORRECT DETAILS NEITHER THE VENDOR, THE AGENT, NOR THE DESIGNER ACCEPT LIABILITY FOR ERROR OR OMISSION.

# Residence 2

**BRUSE**  
REAL ESTATE



## AREAS

LOWER LIVING	56.0
UPPER LIVING	89.0
GARAGE	34.0
ALFRESCO & PORCH	12.0
<b>TOTAL</b>	<b>191.0</b>

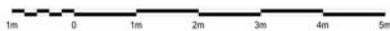
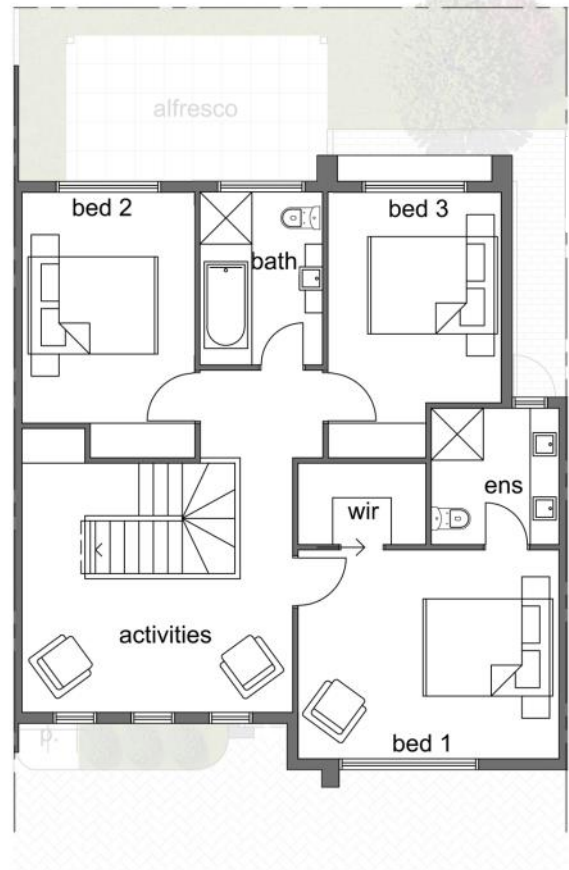
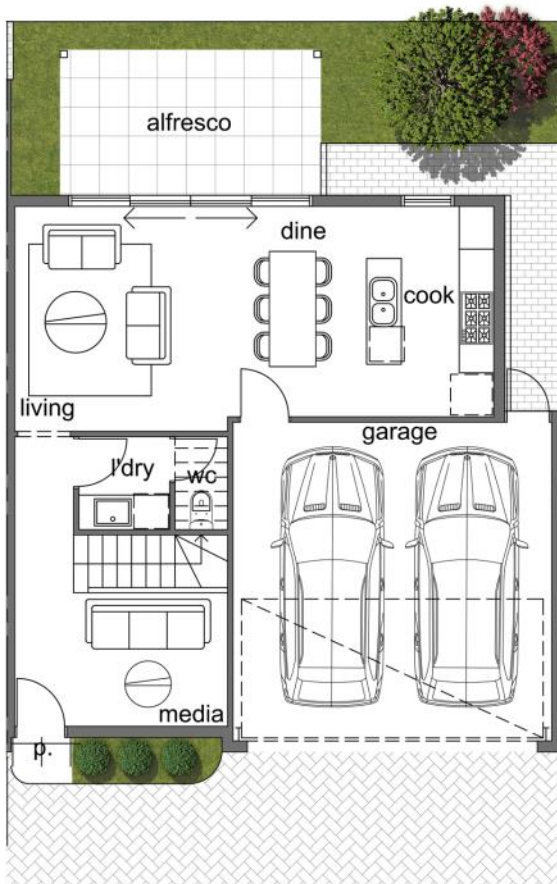


**Priced at \$528,000**

NOTE: THIS PLAN/DOCUMENT IS FOR ILLUSTRATION PURPOSES ONLY. ALL DIMENSIONS ARE APPROXIMATE. WHILE EVERY ENDEAVOUR HAS BEEN MADE TO VERIFY THE CORRECT DETAILS NEITHER THE VENDOR, THE AGENT, NOR THE DESIGNER ACCEPT LIABILITY FOR ERROR OR OMISSION.

# Residence 3

**BRUSE**  
REAL ESTATE



## AREAS

LOWER LIVING	56.0
UPPER LIVING	89.0
GARAGE	34.0
ALFRESCO & PORCH	12.0
<b>TOTAL</b>	<b>191.0</b>

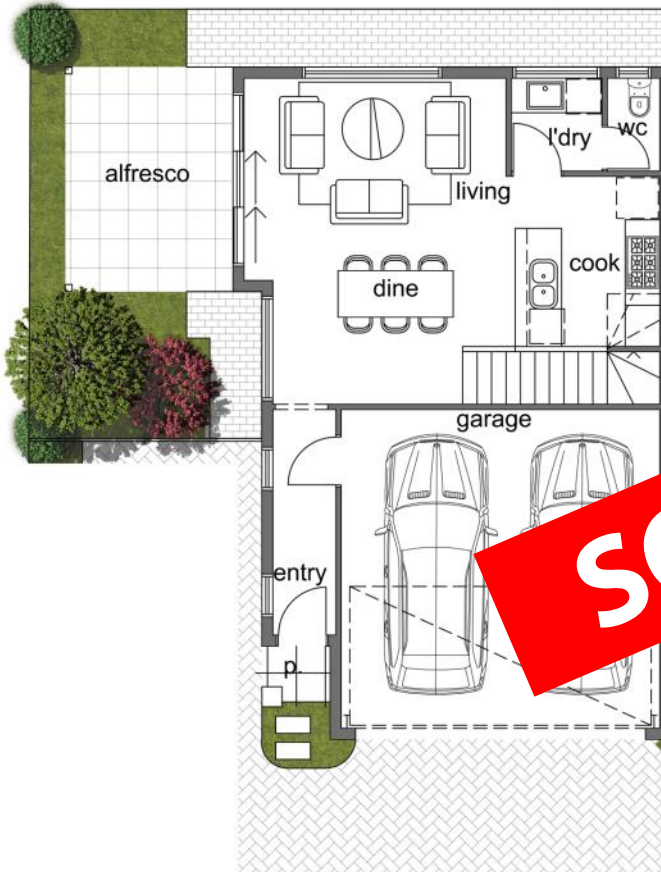


**Priced at** **\$528,000**

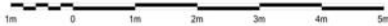
NOTE: THIS PLAN/DOCUMENT IS FOR ILLUSTRATION PURPOSES ONLY. ALL DIMENSIONS ARE APPROXIMATE. WHILE EVERY ENDEAVOUR HAS BEEN MADE TO VERIFY THE CORRECT DETAILS NEITHER THE VENDOR, THE AGENT, NOR THE DESIGNER ACCEPT LIABILITY FOR ERROR OR OMISSION.

# Residence 4

**BRUSE**  
REAL ESTATE



**SOLD**



## AREAS

LOWER LIVING	51.0
UPPER LIVING	83.5
GARAGE	33.0
ALFRESCO & PORCH	12.5
<b>TOTAL</b>	<b>180.0</b>

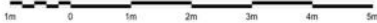


**Priced at** **SOLD**

NOTE: THIS PLAN/DOCUMENT IS FOR ILLUSTRATION PURPOSES ONLY. ALL DIMENSIONS ARE APPROXIMATE. WHILE EVERY ENDEAVOUR HAS BEEN MADE TO VERIFY THE CORRECT DETAILS NEITHER THE VENDOR, THE AGENT, NOR THE DESIGNER ACCEPT LIABILITY FOR ERROR OR OMISSION.

# Residence 5

**BRUSE**  
REAL ESTATE



## AREAS

LOWER LIVING	58.0
UPPER LIVING	80.5
GARAGE	33.0
ALFRESCO & PORCH	12.5
<b>TOTAL</b>	<b>184.0</b>

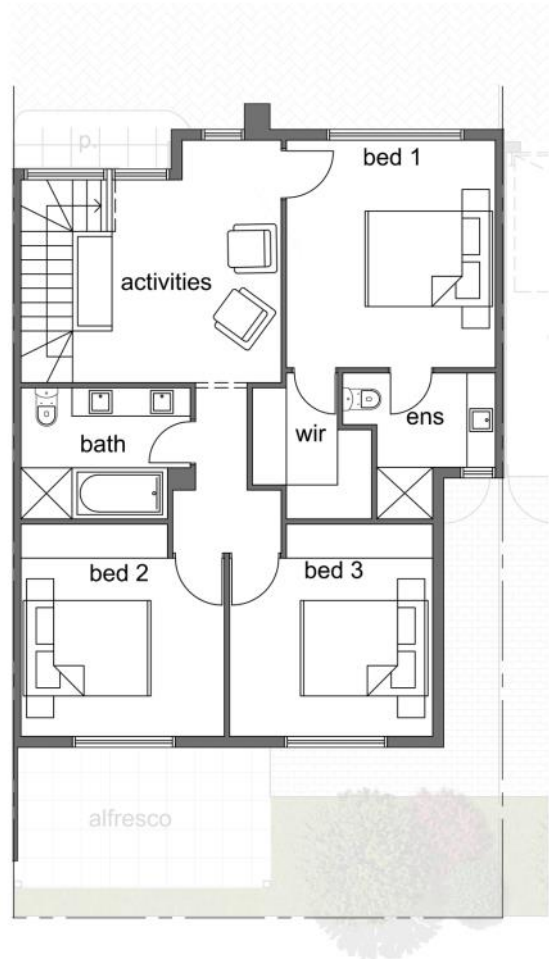
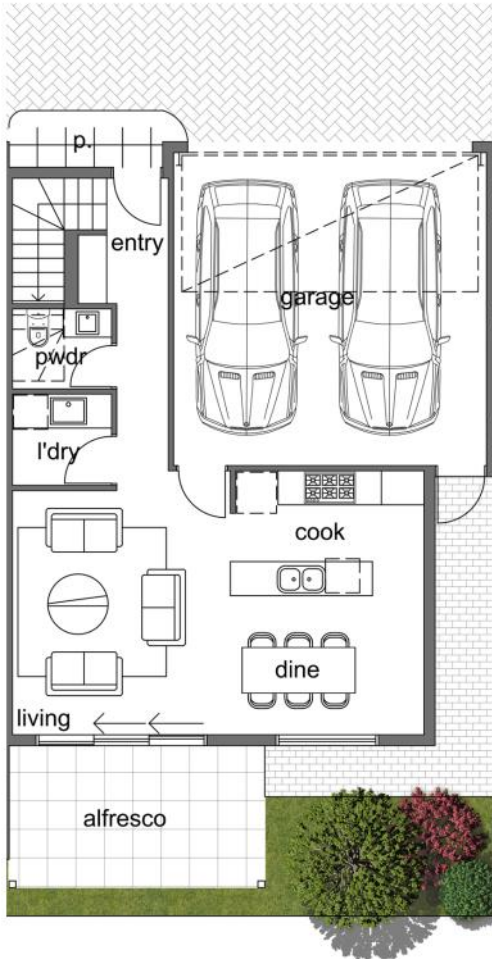


**Priced at** **SOLD**

NOTE: THIS PLAN/DOCUMENT IS FOR ILLUSTRATION PURPOSES ONLY. ALL DIMENSIONS ARE APPROXIMATE. WHILE EVERY ENDEAVOUR HAS BEEN MADE TO VERIFY THE CORRECT DETAILS NEITHER THE VENDOR, THE AGENT, NOR THE DESIGNER ACCEPT LIABILITY FOR ERROR OR OMISSION.

# Residence 6

**BRUSE**  
REAL ESTATE



1m 0 1m 2m 3m 4m 5m



## AREAS

LOWER LIVING	54.0
UPPER LIVING	87.0
GARAGE	33.0
ALFRESCO & PORCH	13.0
<b>TOTAL</b>	<b>187.0</b>

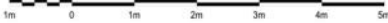
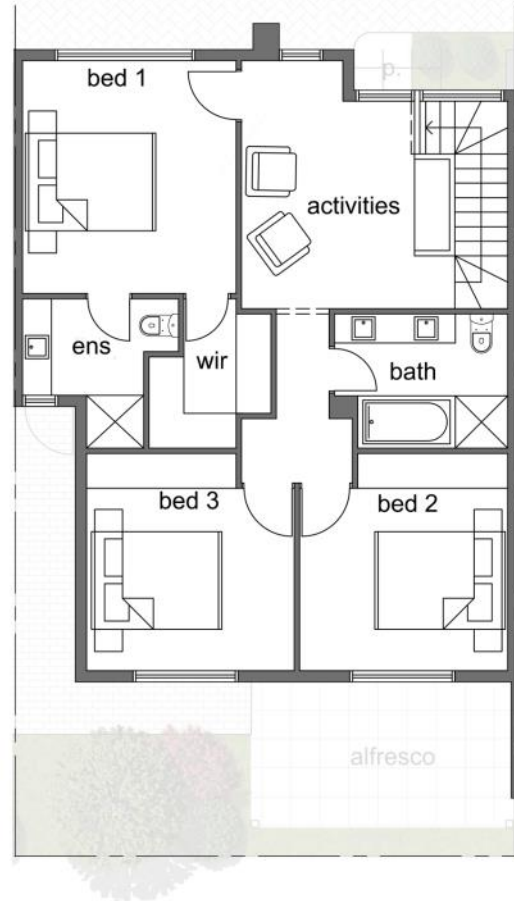
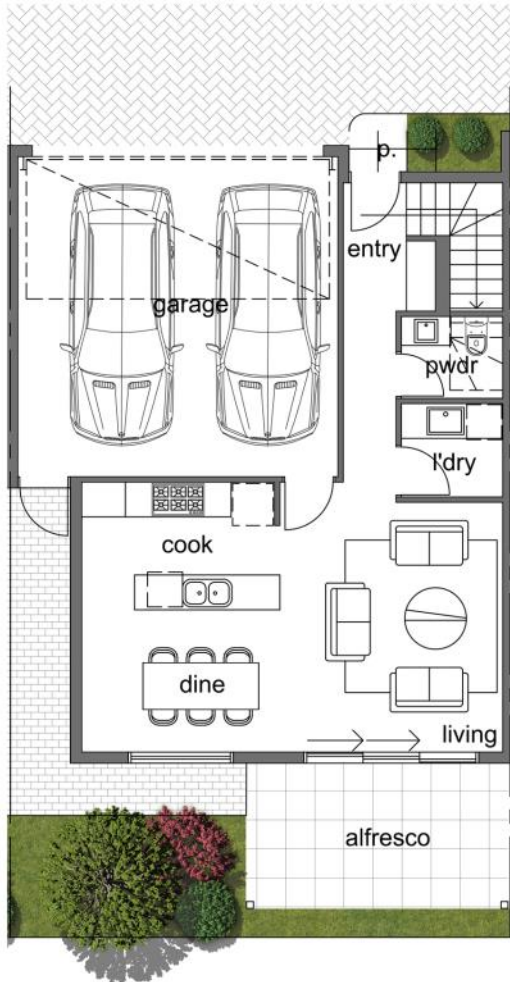


**Priced at \$518,000**

NOTE: THIS PLAN/DOCUMENT IS FOR ILLUSTRATION PURPOSES ONLY. ALL DIMENSIONS ARE APPROXIMATE. WHILE EVERY ENDEAVOUR HAS BEEN MADE TO VERIFY THE CORRECT DETAILS NEITHER THE VENDOR, THE AGENT, NOR THE DESIGNER ACCEPT LIABILITY FOR ERROR OR OMISSION.

# Residence 7

**BRUSE**  
REAL ESTATE



## AREAS

LOWER LIVING	54.0
UPPER LIVING	87.0
GARAGE	33.0
ALFRESCO & PORCH	13.0
<b>TOTAL</b>	<b>187.0</b>

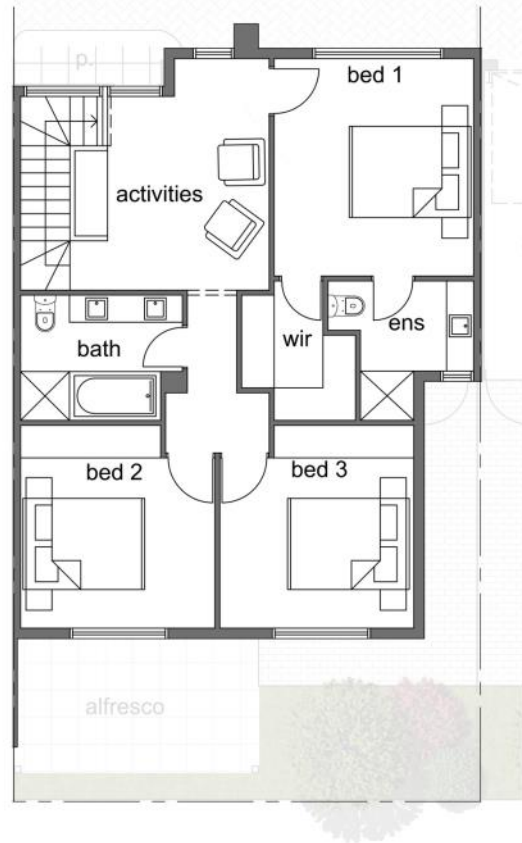
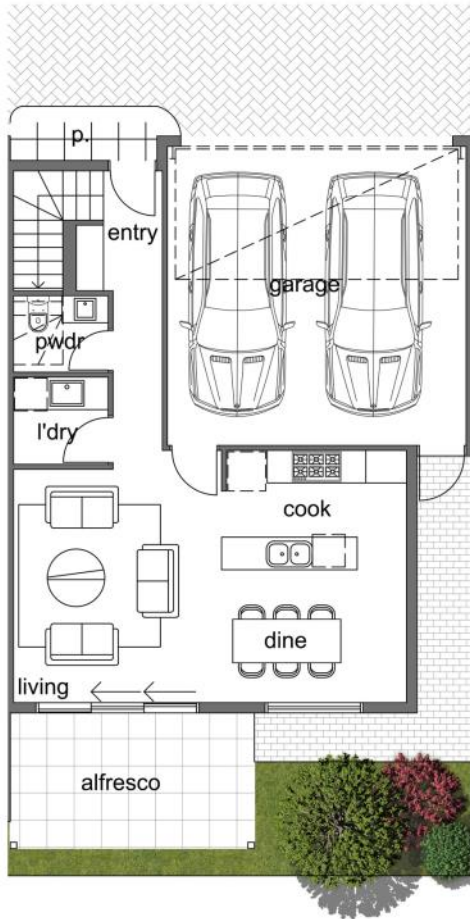


**Priced at \$518,000**

NOTE: THIS PLAN/DOCUMENT IS FOR ILLUSTRATION PURPOSES ONLY. ALL DIMENSIONS ARE APPROXIMATE. WHILE EVERY ENDEAVOUR HAS BEEN MADE TO VERIFY THE CORRECT DETAILS NEITHER THE VENDOR, THE AGENT, NOR THE DESIGNER ACCEPT LIABILITY FOR ERROR OR OMISSION.

# Residence 8

**BRUSE**  
REAL ESTATE



## AREAS

LOWER LIVING	52.5
UPPER LIVING	87.0
GARAGE	33.0
ALFRESCO & PORCH	13.0
<b>TOTAL</b>	<b>185.50</b>



**Priced at \$518,000**

NOTE: THIS PLAN/DOCUMENT IS FOR ILLUSTRATION PURPOSES ONLY. ALL DIMENSIONS ARE APPROXIMATE. WHILE EVERY ENDEAVOUR HAS BEEN MADE TO VERIFY THE CORRECT DETAILS NEITHER THE VENDOR, THE AGENT, NOR THE DESIGNER ACCEPT LIABILITY FOR ERROR OR OMISSION.

# Residence 9

**BRUSE**  
REAL ESTATE



## AREAS

LOWER LIVING	54.0
UPPER LIVING	87.0
GARAGE	33.0
ALFRESCO & PORCH	13.0
<b>TOTAL</b>	<b>187.0</b>



**Priced at** **SOLD**

NOTE: THIS PLAN/DOCUMENT IS FOR ILLUSTRATION PURPOSES ONLY. ALL DIMENSIONS ARE APPROXIMATE. WHILE EVERY ENDEAVOUR HAS BEEN MADE TO VERIFY THE CORRECT DETAILS NEITHER THE VENDOR, THE AGENT, NOR THE DESIGNER ACCEPT LIABILITY FOR ERROR OR OMISSION.

# Specifications



**ITEM:** Kitchen Sink  
Everhard Industries Squareline Plus Double undermount sink  
Code: 73179

**FINISH:** Brushed Stainless Steel



**ITEM:** Kitchen Mixer  
Phoenix Vivid Slimline side lever 160mm gooseneck  
Code: VS735 MB

**FINISH:** Matt Black



**ITEM:** Gas Cooktop  
Smeg CIR93AXS3 900mm gas cooktop

**FINISH:** Stainless Steel



**ITEM:** Oven  
Smeg SA561X-9 600mm under bench oven

**FINISH:** Stainless Steel



# Specifications



**ITEM:** Rangehood  
SmegPUM90X 900mm concealed undermount rangehood

**FINISH:** Stainless Steel

**ITEM:** Dishwasher  
SmegDWA214S free standing dishwasher

**FINISH:** Stainless Steel



**ITEM:** Toilet  
Argent Vista BTW Suite

**FINISH:** White

**ITEM:** Toilet Roll Holder  
Phoenix Gloss roll holder GS892MB

**FINISH:** Matt Black



# Specifications



**ITEM:** Basin Mixer Set  
Phoenix Vivid Slimline Basin mixer set VS785 MB

**LOCATION:** Powder, Bathroom & Ensuite

**FINISH:** Matt Black



**ITEM:** Bath Mixer Set  
Phoenix Vivid Slimline Basin mixer set VS783 MB

**FINISH:** Matt Black



**ITEM:** Shower Rail  
Phoenix Vivid Slimline Basin mixer set V685 MB

**FINISH:** Matt Black



**ITEM:** Shower Mixer  
Phoenix Vivid Slimline shower wall mixer VS780 MB

**FINISH:** Matt Black



# Specifications



**ITEM:** Hand Towel Rail  
Phoenix Gloss towel rail GS893 MB

**FINISH:** Matt Black



**ITEM:** Towel Rail  
Phoenix Gloss 800mm double towel rail GS811MB

**FINISH:** Matt Black



**ITEM:** Bath  
Decina Bambino 1510mm Bath

**FINISH:** White



**ITEM:** Laundry Trough  
Blanco 60cm Inset tub

**FINISH:** Stainless Steel



# APP Waterproof Smart Lock

Access by Password / Fingerprint / APP / Card / Mechanical key  
Effectively protect the smart lock from water and dust



**IP65**  
**Waterproof**

## Bruse Real Estate

### For 3 Generations 1957 - >>>

The directors of **BRUSE Real Estate**, Bevan and Theon Bruse, are proud to say that the **Bruse** name has been associated with real estate for three generations. Sydney Bruse operated as a real estate agent for many years in the Payneham and Marryatville districts of South Australia. His son Bevan, grandson Theon, and Bevan's wife Jill have kept the name alive in the real estate industry.



Real estate is well established in the **Bruse** family. They are enthusiastic and extremely passionate about the industry. Bevan originally joined his father in real estate at the young age of 20. Bevan joined Brock Partners when the company commenced some 25 years ago. Theon joined Bevan at Brock Partners 18 years ago until they opened a franchise in the Eastern suburbs.

Bevan and Theon Bruse decided to open the "**Bruse**" agency, a boutique agency suitable to their select clients to offer them a service that they believe is ahead of the rest. Bevan's wife Jill is now part of the **Bruse** agency in a business management capacity.

The **Bruse** office is active in **selling property** and **property management**. The **Bruse** office is wonderfully positioned on Greenhill Road, at Toorak Gardens just opposite all the banks and Burnside Village. This prominent position has excellent car parking at the rear of the building, making it easier for buyers, sellers, landlords, tenants and other clients to call into the office. It is also extremely close to the city and business centre.

The interior of the office is very bright, light and airy with modern designer décor. The **Bruse** staff enjoy the environment and the social life of working close to one of Adelaide's premium shopping centres, Burnside Village, and the excellent local restaurants and amenities. **BRUSE Real Estate** welcomes you to call into their office whenever you pass by.

357 Greenhill Rd Toorak Gardens  
Ph: 8431 8181 F: 8431 8893  
Abn: 34 122 770 068  
Rla: 181689  
[www.bruse.com.au](http://www.bruse.com.au)