

FOR SALE



27 Pullen Road,
EVERTON PARK

3 2 3 607m²

Queensland lifestyle - Big Deck, Big Backyard & Big Shed

This beautiful post war Queenslander sits on a 607m², modernised block, with the perfect blend of yesteryear and all the current conveniences. Ornate cornicing, French doors, timber floors, high ceilings and classic gables all display the elegance and timeless appeal of Queenslanders.

The modern open plan kitchen services the large lounge / dining room and flows onto the rear deck; with a north-easterly aspect for cooling summer breezes and private views of the backyard and surrounds.

Home

- 3 Generous size bedrooms all with built-in wardrobes
- Main bedroom has ensuite
- Modern/spacious kitchen, kitchen island, gas stove top, oven and dishwasher.
- Separate lounge and dining
- Ornate ceilings
- Wooden floors
- Aircon in living room and main bedroom
- Ceiling fans throughout
- Low maintenance established garden for privacy
- NBN HFC
- North East aspect from rear deck

Grounds

- 607m² block with elevated views facing north-easterly aspect
- UV-blinds installed on enclosed deck.
- Powered 6x4m shed with 3m height and insulated roof.
- Side access large enough for cars and larger vehicles.
- 2 car carport, side gate access on either side and fully fenced backyard
- Fully accessible underneath house, large area for storage



Contact

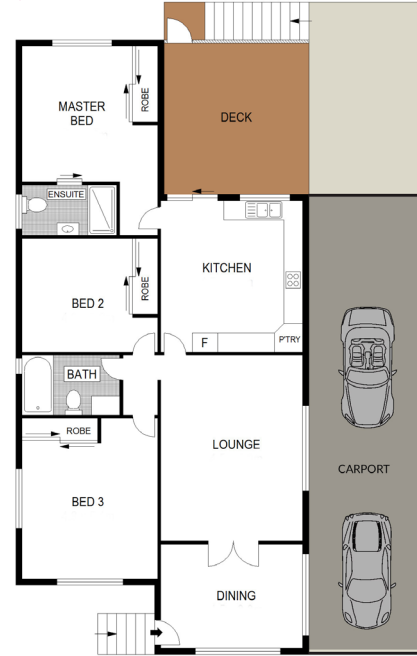
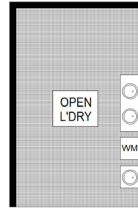
Jason Mrak 0413 577 211
jason@sellingbrisbane.com.au

27 PULLEN ROAD,
Everton Park

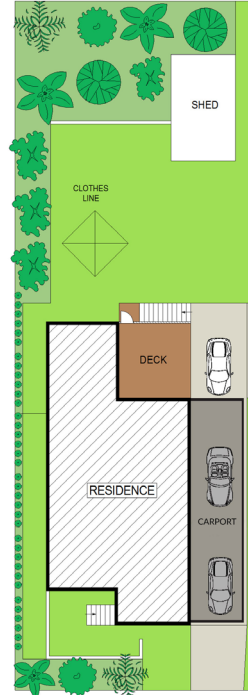


sellingbrisbane.com.au

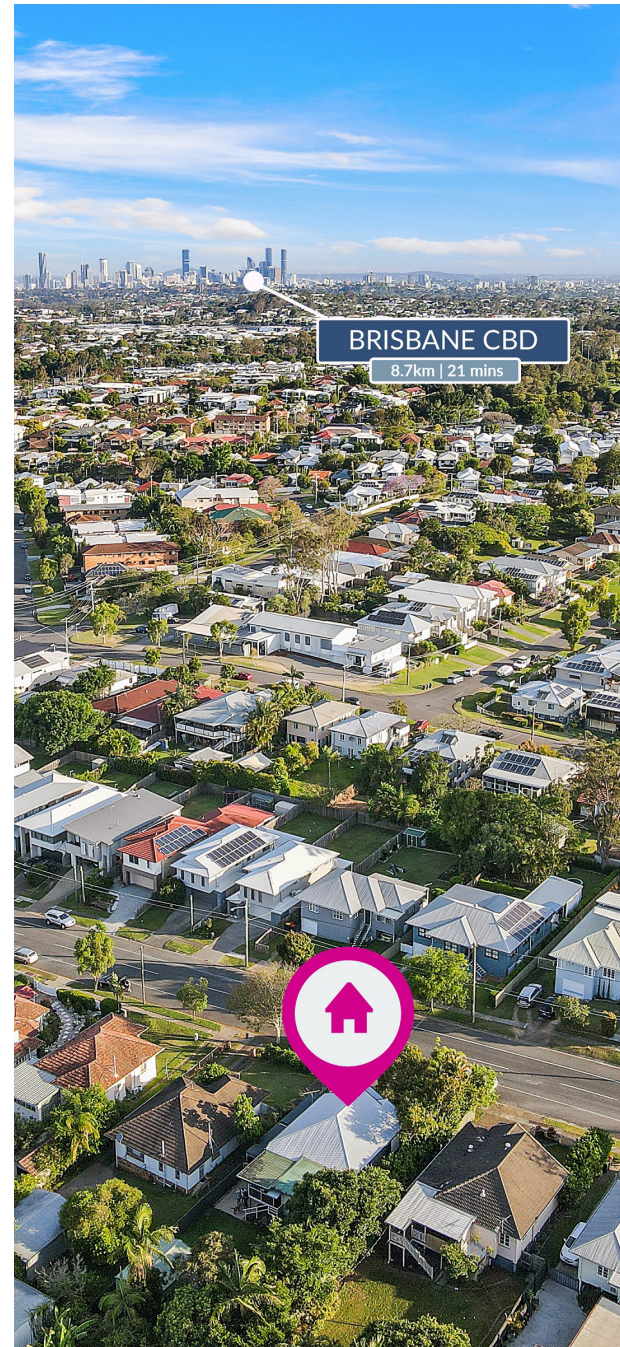




GROUND FLOOR



SITE PLAN (NOT TO SCALE)



Lifestyle & Location



Less than 10km from the city

950m to Everton Plaza, several local eateries and grocery stores.

500m to Teralba Park | playground upgrades inc a Ninja warrior course



3 min drive to Mitchelton station

2 mins to Brookside shopping centre

3 mins to Homemaker centre - BCF, anaconda, Super Cheap Auto, & more