



Luschwitz
SERVING PYMBLE FOR OVER 50 YEARS

FOR LEASE



203/23-29 Gilroy Road, Turramurra



2



2



1

Brand new luxury apartment just moments to the shops and station

Private & Peaceful - Ampersand is situated in the pristine Central-North of Turramurra, in a tree-lined, quiet residential neighbourhood. Only a three-minute walk from the train station, bus station, popular cafes and restaurants and local shops, Ampersand offers convenient centrality in a distinctively tranquil community atmosphere.

Immerse yourself in a warm and inviting living room designed and styled by Coco Republic's award-winning interior design team. With engineered timber flooring throughout the living spaces and a northerly aspect, the apartment is filled with natural light.

Consciously designed with a view to creating the perfect space for entertaining, Ampersand's spacious open-plan dining and al fresco areas blend seamlessly, leading onto generous terraces with views of the surrounding local landscape. Outdoor areas have been fine-tuned by Coco Republic's design team to optimise furniture placement, and to maximise open space, light and air flow.

An impressive and oversized kitchen features Smartstone island benches, Miele appliances (including fully integrated dishwasher, built-in microwave, oven with gas cooktop), marble splashbacks and fully-integrated fridge and freezer.

The spacious bedrooms, including a primary with en-suite and its own balcony, feature generous built-in robes and enjoy privacy and separation from the living areas.

Exceptionally finished throughout, the apartment includes reverse cycle air-conditioning, security access, high ceilings, excellent storage and single car space.

Price : \$770 per week

View : as advertised of by appt

• Available from 17 December 2022

• Lease term: 12 months to start

• Sorry no pets are allowed



Apply Online: <http://www.bit.ly/luschwitz>

(Follow the steps on the website and attach documents where required)



Josh Luschwitz

josh@luschwitz.com.au

Bus 9449 5511 Mobile 0431 455 717



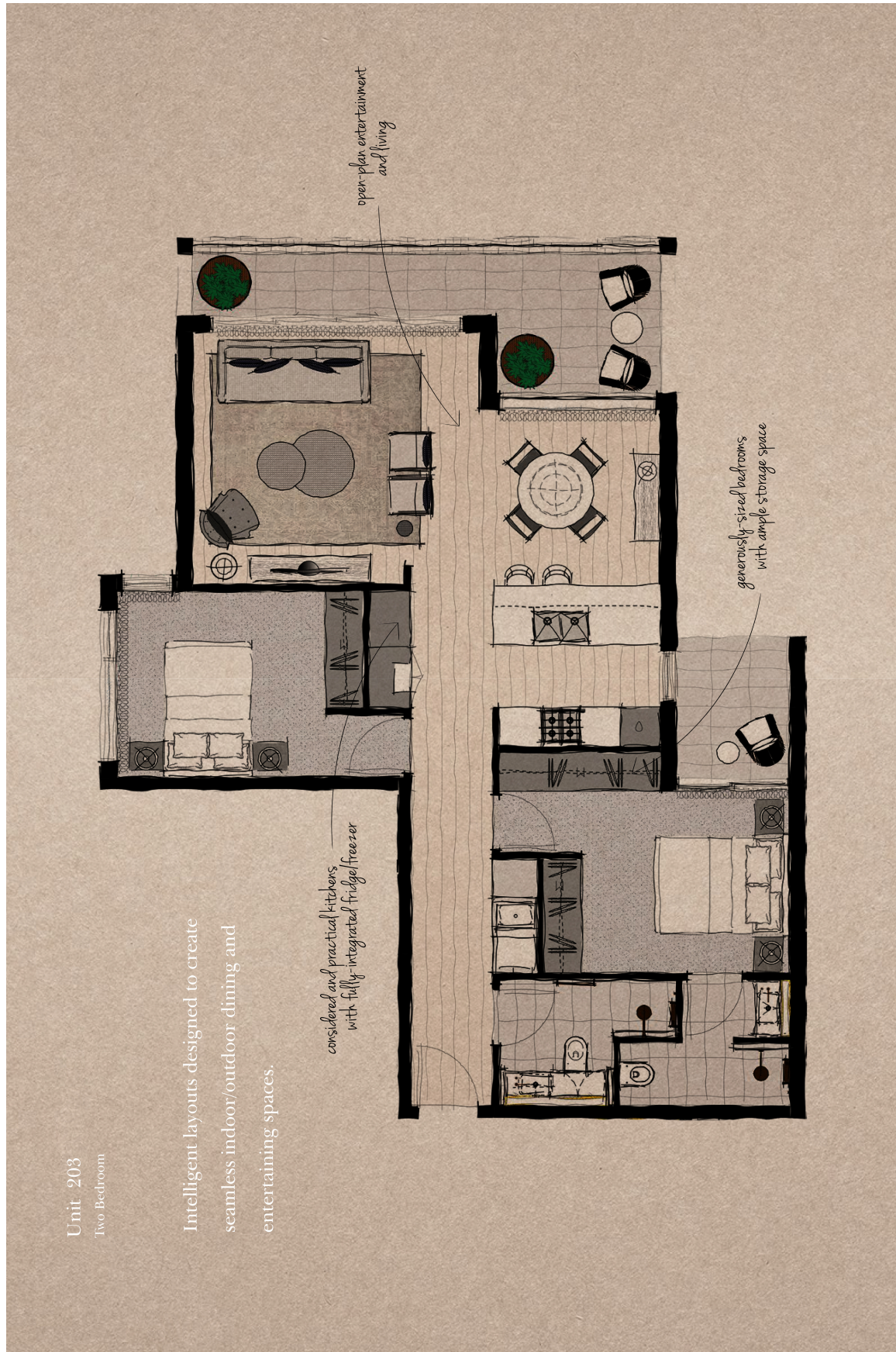
Leasing Team

leasing@luschwitz.com.au

Mobile 0431 455 717



Luschwitz



PLANS SHOWN ONLY INDICATIVE OF LAYOUT. DIMENSIONS ARE APPROXIMATE.

203/23-29 Gilroy Road, Turrumurra



Luschwitz

REAL ESTATE