



216.7m² | 23.3sq

2  1  2  2 

Follow the sun

Sunny by name and nature, this light-filled home is ready for you to kick off your shoes and soak up your big new life. The Sunningdale greets you with a familiar open-plan living configuration that embraces the great outdoors and beyond. Mornings are for a neighbourly coffee catch-up on the front porch while sunset is perfect for a private dinner with friends on the rear patio. Your personal retreat at day's end is the master suite, complete with walk-in robe, his-and-hers vanities and private access to the outdoors.

Everyday made easy

Thoughtful planning means you can slip easily between the flexible kitchen, laundry and internal courtyard, making multi-tasking easy and letting you get on with living your best life. The 'hub' nook just inside the laundry is just the spot for the kettle, toaster and charging laptops and phones. It also comes with the option of an additional pantry. The generous double garage opens to the internal courtyard where you can park the golf buggy or store bicycles and surfboards.

Flexibility's great

As the name suggests, the multi-purpose room (MPR) throws up many possibilities: study, media room or project haven. Hosting family or friends overnight is easy with the second bedroom – a 'mini-master' suite that connects with the main bathroom to provide the luxury of separate and private guest quarters.

Life begins at [Halcyon.com.au](https://www.halcyon.com.au) 1800 050 580



Sunningdale G3

216.7m² | 23.3sq

Living Areas (m)

Living	5.5 x 4.5
Dining	4.6 x 2.7
Outdoor living	3.8 x 4.7
Garage	6.1 x 5.8

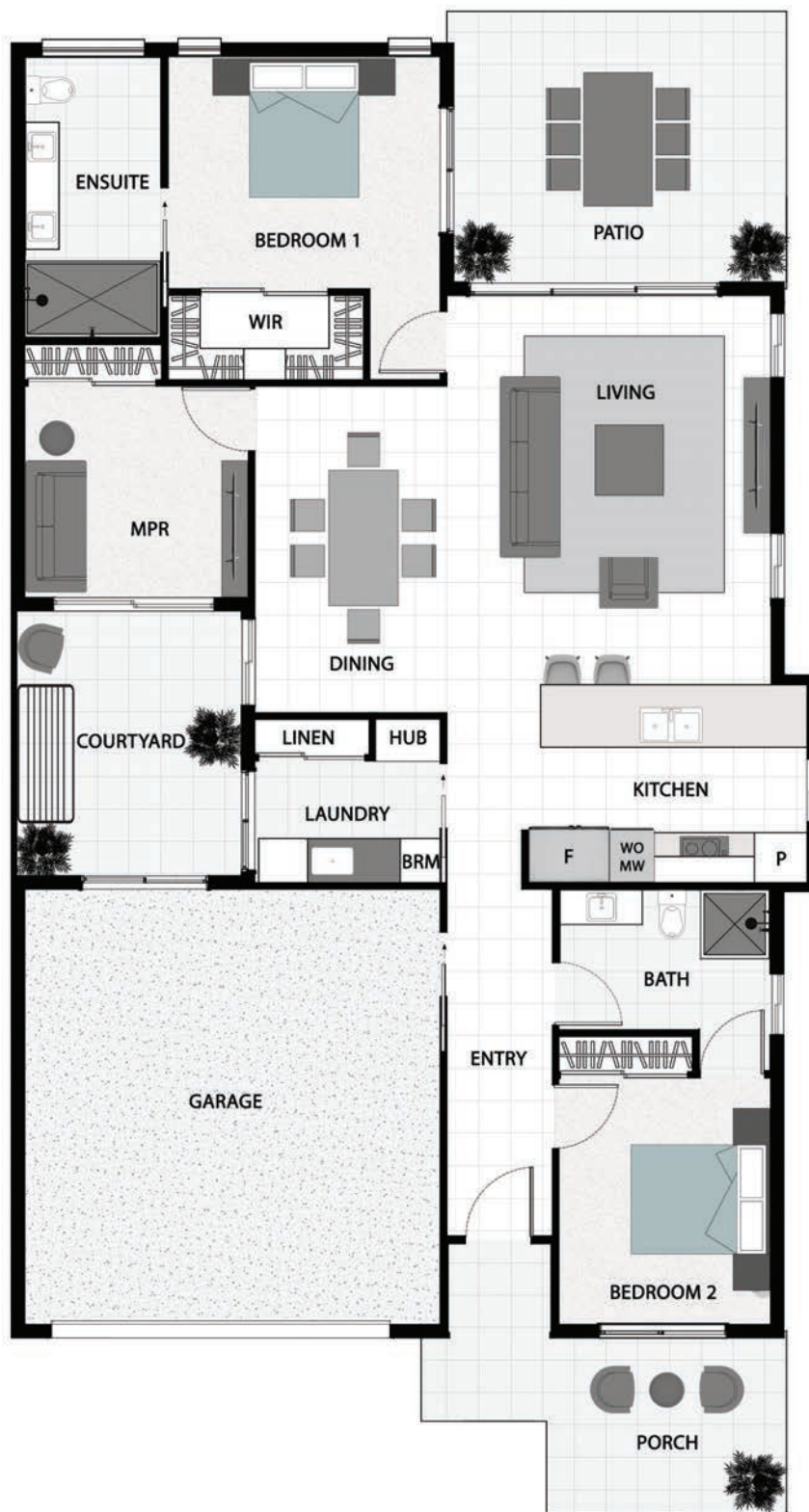
Bedrooms (m)

Master suite	3.3 x 3.8
Bedroom 2	3.5 x 3.0
MPR	3 x 3.1

Total Areas (m²)

Courtyard	12.2
House	133.3
Patio	18.1
Garage	39.5
Porch	13.4

Total m ²	216.7
Total sq	23.3



The Halcyon Home
Triple Guarantee



Superior
energy rating,
increased comfort
& reduced cost
of living



Relocatability
Patent Number:
2009243510 driving
legal certainty &
compliance



Silver as design
standard,
future-proofing
your home