

Dingle Partners

- | Estate Agents
- | Sales
- | Property Management
- | Project Management
- | Consultants

910/528 Swanston Street, Carlton



Additional Information

- Secure Intercom Entry & Lift Access
- Top Floor Corner; South-Westerly Aspect
- Heating & Colling
- City Views
- Move In or Excellent Investment Opportunity

Rates:

Water Rates - \$615.88 per annum approx.
Council Rates - \$509.30 per annum approx.
Owners Corp - \$3,971.72 per annum approx.

Chattels:

All fixed floor coverings, electric light fittings and fixtures, window furnishings

Preferred Settlement:

30/60 days – 10% deposit

Rental Appraisal Price:

\$300 - \$330 per week

Schools:

University of Melbourne	400 m
RMIT University Melbourne Campus	450 m
Carlton Gardens Primary School	600 m
University High School	1.1 km

Public Transportation:

Tram: 4-Queensberry St / Swanston St	100 m
Bus: Queensberry St / Lygon St	200 m

Other Amenities

ALDI Grocery Store	390 m
Carlton Gardens	600 m
Queen Victoria Market	710 m
Her Majesty's Theatre	930 m

PRIVATE SALE

CONTACT ROBERT EGGERS

0412 329 340

Dingle Partners Pty Ltd. ABN: 67 099 681 188 Tel: 61 3 9614 6688 Fax: 61 3 9629 8811 www.dinglepartners.com.au

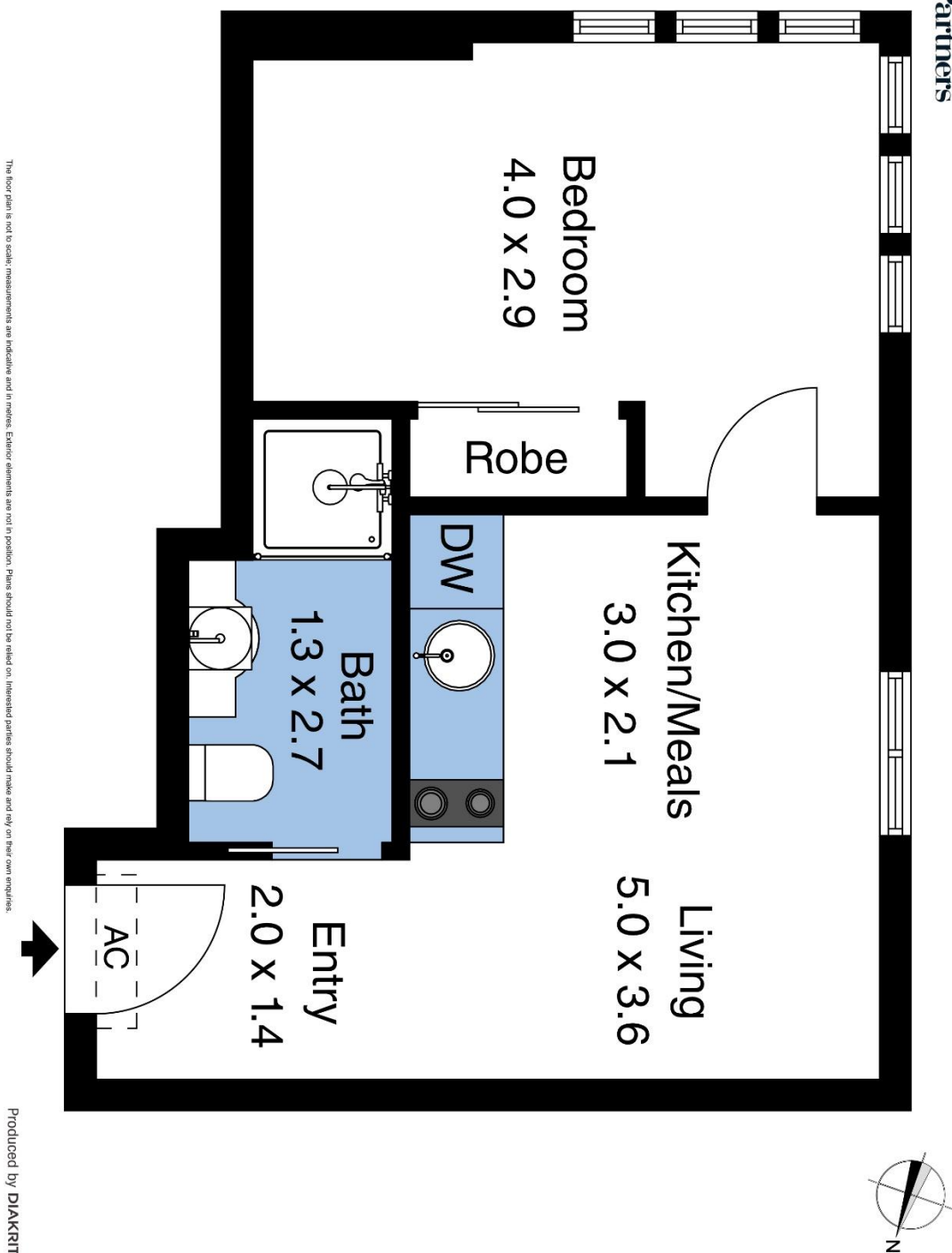
Directors: Malcolm Dingle FREI AAPI, Robert Eggers AREI, CEA (REIV), Paul Harberts BEng

Head Office: 39 Queen Street, Melbourne VIC 3000 | Carlton | Richmond | St Kilda Rd

Dingle Partners

- | Estate Agents
- | Sales
- | Property Management
- | Project Management
- | Consultants

Dingle Partners



The floor plan is not to scale; measurements are indicative and in metres. Errors elements are not in position. Plans should not be relied on. Interested parties should make and rely on their own enquiries.

Produced by DIAKRIT

Dingle Partners Pty Ltd. ABN: 67 099 681 188 Tel: 61 3 9614 6688 Fax: 61 3 9629 8811 www.dinglepartners.com.au

Directors: Malcolm Dingle FREI AAPI, Robert Eggers AREI, CEA (REIV), Paul Harberts BEng

Head Office: 39 Queen Street, Melbourne VIC 3000 | Carlton | Richmond | St Kilda Rd