

[brusenewhomes.com.au](http://brusenewhomes.com.au)



---

## MAGILL

4 Greer Place



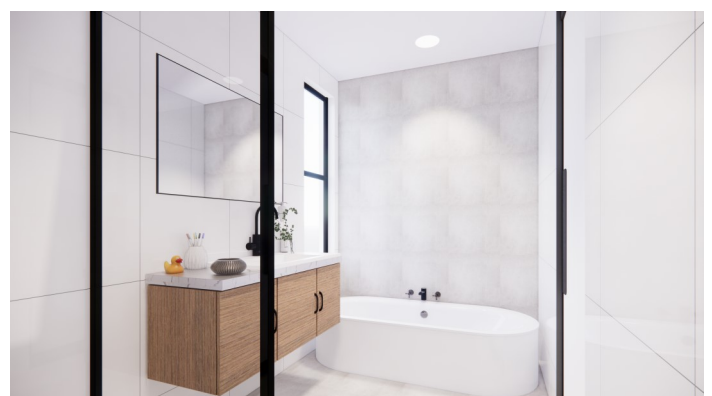
Theon Bruse  
[theon.bruse@bruse.com.au](mailto:theon.bruse@bruse.com.au)  
0419 816 470



Toby Shipway  
[toby.shipway@bruse.com.au](mailto:toby.shipway@bruse.com.au)  
0413 600 919  
357 Greenhill Road  
Toorak Gardens SA 5065  
RLA 181689

Ultra stylish. Designer quality.

**BRUSE**  
REAL ESTATE



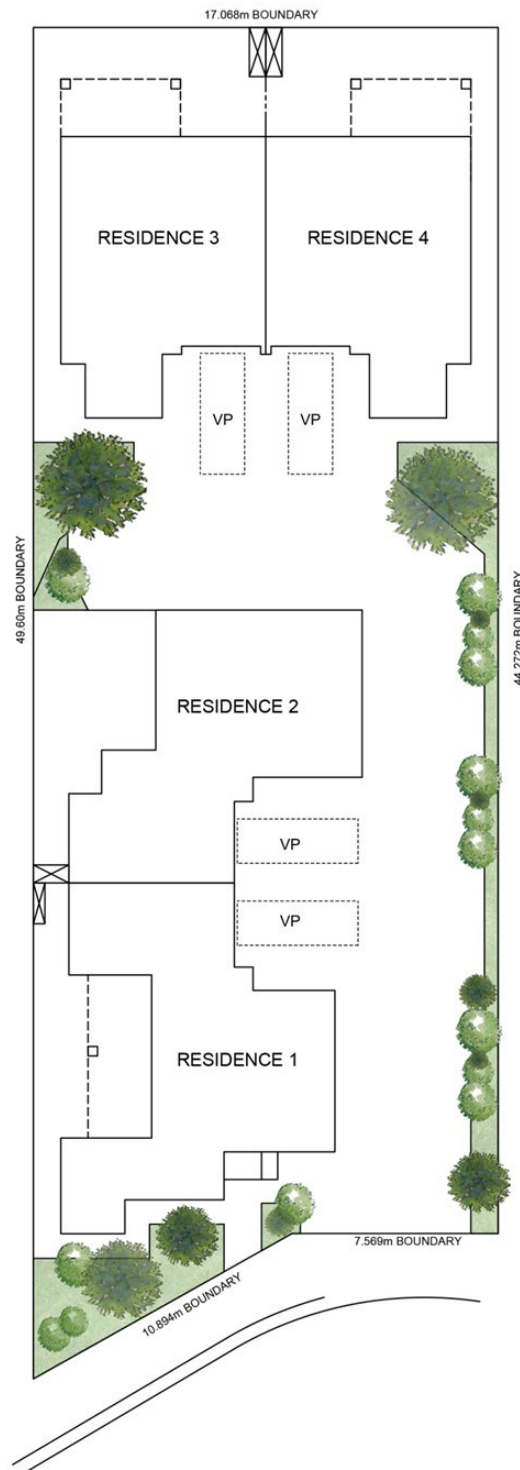
NOTE: THIS PLAN/DOCUMENT IS FOR ILLUSTRATION PURPOSES ONLY. ALL DIMENSIONS ARE APPROXIMATE. WHILE EVERY ENDEAVOUR HAS BEEN MADE TO VERIFY THE CORRECT DETAILS NEITHER THE VENDOR, THE AGENT, NOR THE DESIGNER ACCEPT LIABILITY FOR ERROR OR OMISSION.



NOTE: THIS PLAN/DOCUMENT IS FOR ILLUSTRATION PURPOSES ONLY. ALL DIMENSIONS ARE APPROXIMATE. WHILE EVERY ENDEAVOUR HAS BEEN MADE TO VERIFY THE CORRECT DETAILS NEITHER THE VENDOR, THE AGENT, NOR THE DESIGNER ACCEPT LIABILITY FOR ERROR OR OMISSION.

# SITE PLAN

**BRUSE**  
REAL ESTATE



G R E E R P L A C E

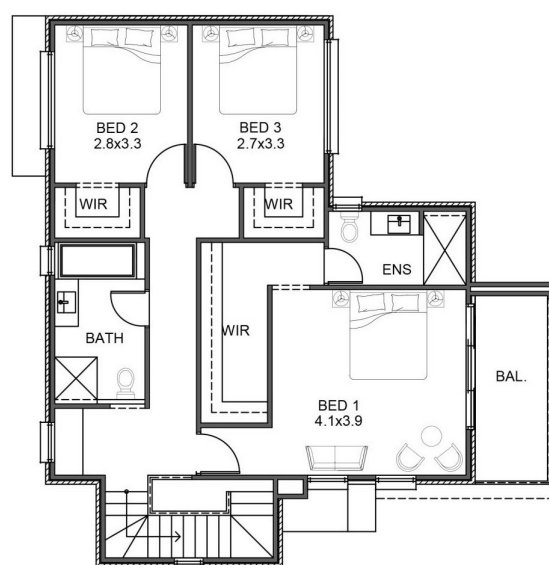
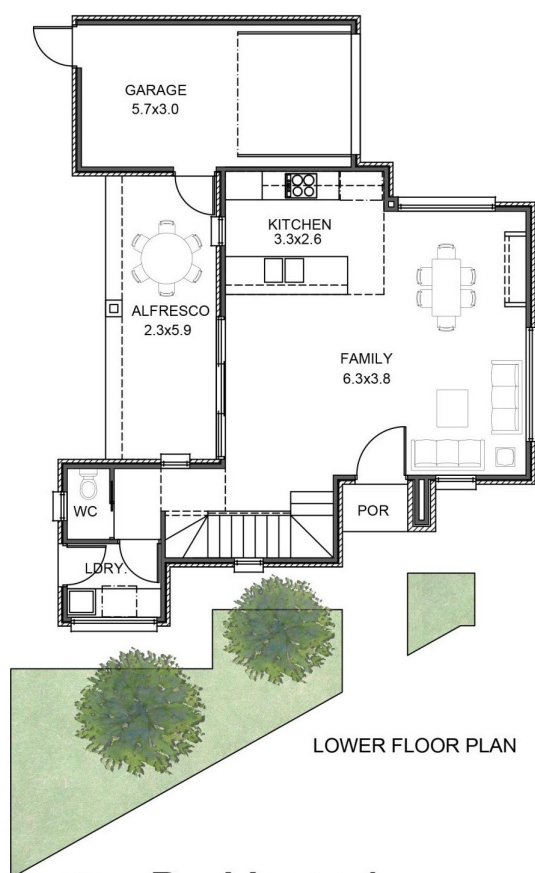


**4x TWO STOREY TOWNHOUSES**

SCALE 1:200

NOTE: THIS PLAN/DOCUMENT IS FOR ILLUSTRATION PURPOSES ONLY. ALL DIMENSIONS ARE APPROXIMATE. WHILE EVERY ENDEAVOUR HAS BEEN MADE TO VERIFY THE CORRECT DETAILS NEITHER THE VENDOR, THE AGENT, NOR THE DESIGNER ACCEPT LIABILITY FOR ERROR OR OMISSION.

# Residence 1



## Residence 1

SCALE 1:100

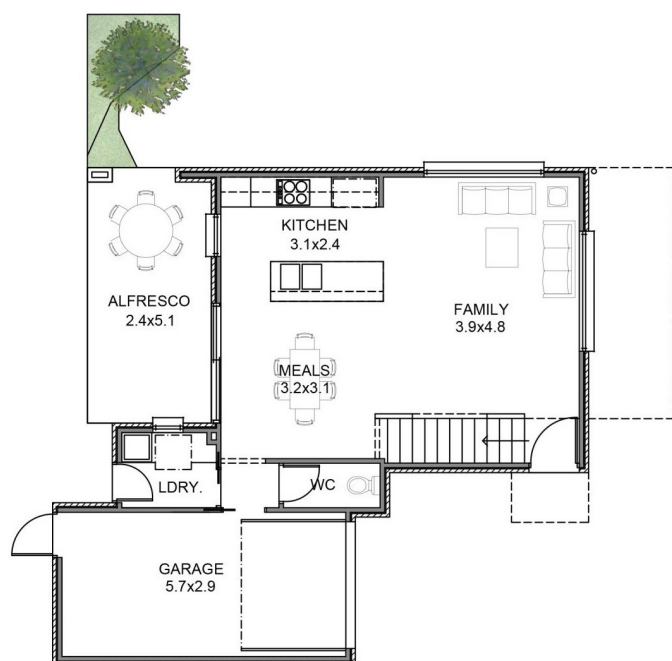
LOWER LIVING	UPPER LIVING	GARAGE	BALCONY	ALFRESCO	PORCH	TOTAL
57.80 SQM	84.60 SQM	19.92 SQM	7.02 SQM	13.94 SQM	2.00 SQM	185.28 SQM

**Priced at \$555,000**

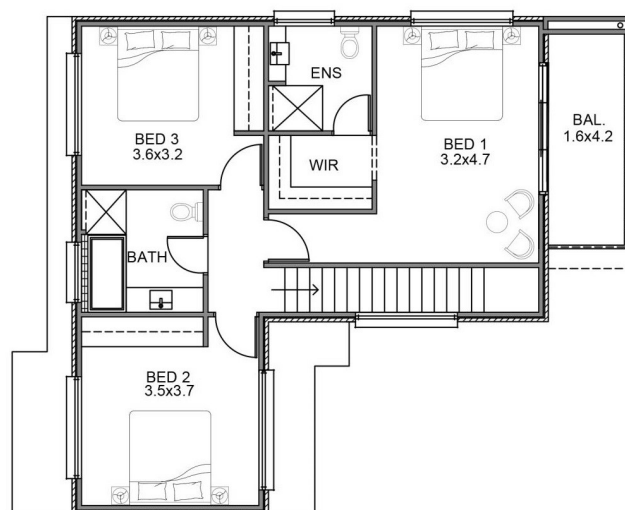
NOTE: THIS PLAN/DOCUMENT IS FOR ILLUSTRATION PURPOSES ONLY. ALL DIMENSIONS ARE APPROXIMATE. WHILE EVERY ENDEAVOUR HAS BEEN MADE TO VERIFY THE CORRECT DETAILS NEITHER THE VENDOR, THE AGENT, NOR THE DESIGNER ACCEPT LIABILITY FOR ERROR OR OMISSION.



# Residence 2



LOWER FLOOR PLAN



UPPER FLOOR PLAN



## Residence 2

SCALE 1:100

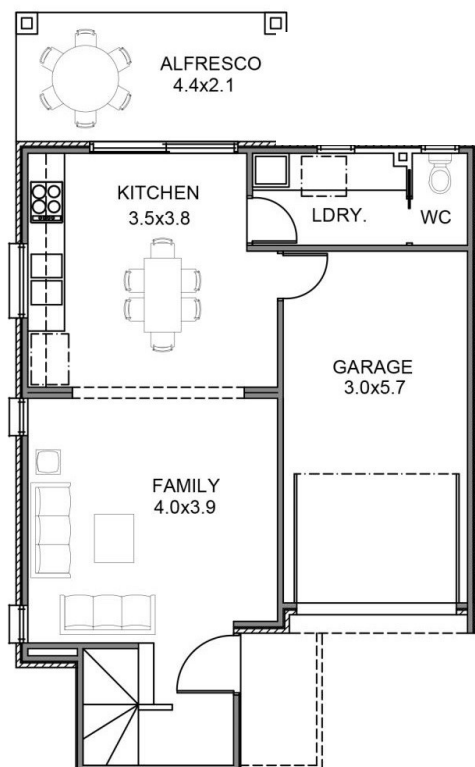
LOWER LIVING	UPPER LIVING	GARAGE	BALCONY	ALFRESCO	TOTAL
53.10 SQM	73.68 SQM	19.92 SQM	7.27 SQM	12.78 SQM	166.75 SQM

**Priced at \$525,000**

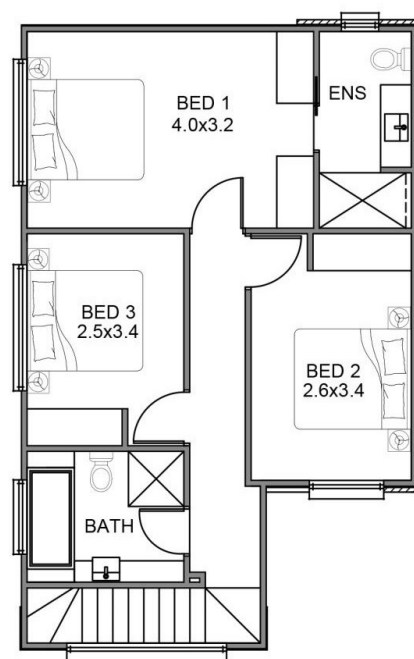
NOTE: THIS PLAN/DOCUMENT IS FOR ILLUSTRATION PURPOSES ONLY. ALL DIMENSIONS ARE APPROXIMATE. WHILE EVERY ENDEAVOUR HAS BEEN MADE TO VERIFY THE CORRECT DETAILS NEITHER THE VENDOR, THE AGENT, NOR THE DESIGNER ACCEPT LIABILITY FOR ERROR OR OMISSION.

# Residence 3

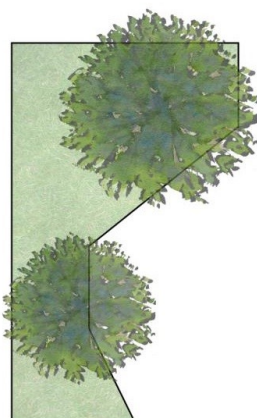
**BRUSE**  
REAL ESTATE



LOWER FLOOR PLAN



UPPER FLOOR PLAN



**Residence 3**

SCALE 1:100

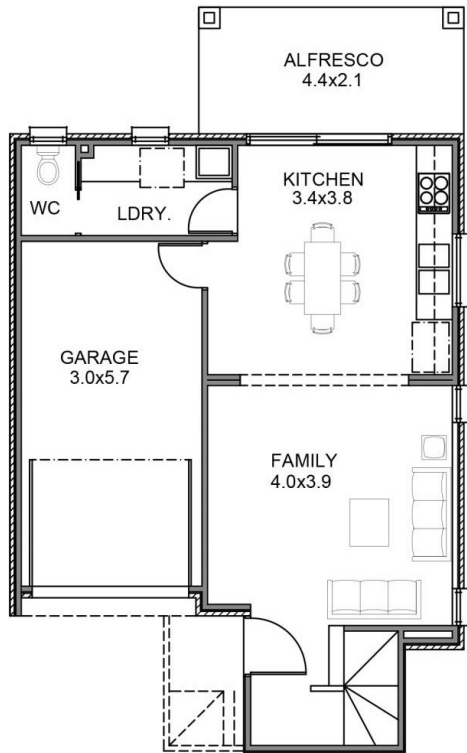
**Priced at \$495,000**

LOWER LIVING	UPPER LIVING	GARAGE	ALFRESCO	TOTAL
48.01 SQM	62.05 SQM	18.91 SQM	9.24 SQM	138.21 SQM

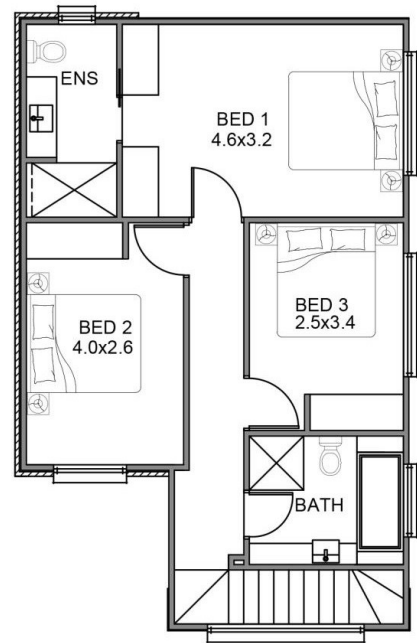
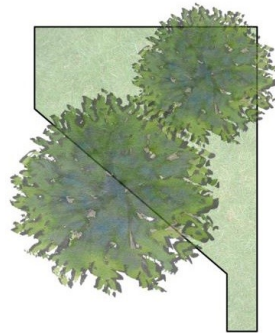
NOTE: THIS PLAN/DOCUMENT IS FOR ILLUSTRATION PURPOSES ONLY. ALL DIMENSIONS ARE APPROXIMATE. WHILE EVERY ENDEAVOUR HAS BEEN MADE TO VERIFY THE CORRECT DETAILS NEITHER THE VENDOR, THE AGENT, NOR THE DESIGNER ACCEPT LIABILITY FOR ERROR OR OMISSION.

# Residence 4

**BRUSE**  
REAL ESTATE



LOWER FLOOR PLAN



UPPER FLOOR PLAN



**Residence 4**

SCALE 1:100

**Priced at \$495,000**

LOWER LIVING	UPPER LIVING	GARAGE	ALFRESCO	TOTAL
48.01 SQM	62.05 SQM	18.91 SQM	9.24 SQM	138.21 SQM

NOTE: THIS PLAN/DOCUMENT IS FOR ILLUSTRATION PURPOSES ONLY. ALL DIMENSIONS ARE APPROXIMATE. WHILE EVERY ENDEAVOUR HAS BEEN MADE TO VERIFY THE CORRECT DETAILS NEITHER THE VENDOR, THE AGENT, NOR THE DESIGNER ACCEPT LIABILITY FOR ERROR OR OMISSION.



# 4 Greer Place

## Magill



### Design

- Custom architectural design
- Choice of two feature colour schemes
- 2.7m ceilings throughout

### Floor Coverings

- Tiled living areas
- Choice between quality timber laminated flooring or plush carpets within bedroom and robes

### Kitchens and Cabinetry

- 40mm stone bench top
- Soft-close doors + drawers
- Designer under-bench and sink taps corresponding to colour scheme
- Custom designed cabinetry throughout with Polytech Ravine range
- 900mm Bosch Gas Cooktop
- 600mm Bosch Electric Fan Forced Over
- Integrated Bosch Dishwasher
- Concealed undermount rangehood

### Climate Control

- Samsung ducted reverse cycle ducted air conditioning (12.5kW/10kW)
- Fully zoned (all living areas/bedrooms)

### Doors and Carpentry

- 2.4m high feature entrance door
- 2.4m high feature internal doors
- Architectural range door hardware
- Modern 90mm skirting boards and 67mm architraves
- Single bevel skirtings with arch 90x19mm (MDF)
- Square dressed architraves 67x18mm (MDF)
- Internal MDF door jams
- 10mm thick plasterboard in walls and ceilings
- 90mm cornices

### Bathroom and Ensuite

- Rectified 300x600 tiling to all bathrooms
- Feature walls in wet areas
- Smart tile floor grates
- High quality designer sanitaryware corresponding to colour scheme
- Semi-frameless shower screens according to colour scheme
- All vanity areas with large fashionable mirrors

### Electrical and Lighting

- LED downlights to all living areas and master bedroom
- Feature LED pendant lighting to kitchen
- Digital TV antenna
- Clipsal iconic power points and switches
- Digital hot water controller
- Sensor lighting at front entrance and garage

### Plumbing

- Continuous gas hot water system
- High quality designer sanitaryware throughout according to colour scheme

### Exterior

- Complete landscape package as per landscaping plan
- Fully automatic drip irrigation
- Quality paving throughout

### Stairs

- Pine handrail, with stainless steel standoff brackets (MDF)
- Storage room under staircase

### Robes

- Hanging rail with 1 bank of shelves
- Robe Height: 2700mm height
- Robe Type: Sliding
- Robe Fronts: Mirror
- Robe Frames: Dependant on colour scheme
- All walk-in robes according to plan

### Other Inclusions

- Complete security and intercom system
- Smoke detectors throughout
- Termite protection throughout
- Quality letterbox
- Stormwater in accordance with engineer's specifications (90mm PVC)
- Insulation as per energy report
- NBN ready

## House 1 & 3 Black

### Kitchen Appliances

#### [Bosch Oven](#)

Serie | 8 Built-in oven

Black

**HBG633BB1B**

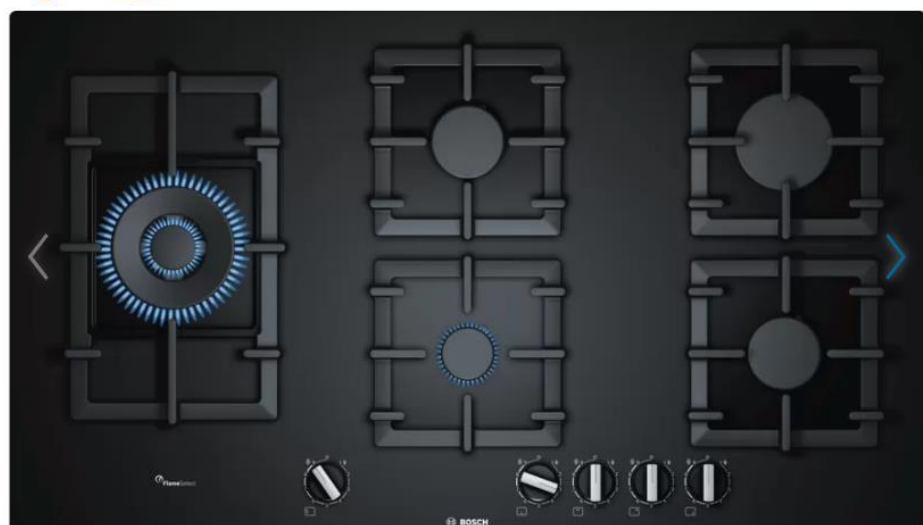


#### [Bosch Black 900 Cooktop](#)

Serie | 6 Gas hob

90 cm Black

**PPS9A6B90A**



[Euromaid](#)  
[Range Hood](#)



**90cm Black Glass Under Cupboard  
Rangehood | UCG90B**

UCG90B -Black Glass

A premium 90cm rangehood for under cupboard installation. The hood features black tempered glass that conceals the filter and provides a seamless integrated look in your kitchen design.

Perimeter Aspiration extracts steam and cooking vapours evenly and efficiently around the edges of the hood using a powerful 1000m<sup>3</sup> airflow.

Front strip, energy efficient, LED lights illuminate the workspace. This unit also comes with a handy timer and 3 speed easy use touch controls.

*Available only at selected Harvey Norman, Domayne and Joyce Mayne Stores.*

900mm (W) x 307 mm (H) x 296mm (D)

- Black tempered glass under cupboard installation
- 1000 m3/hr airflow - strong extraction
- Ducted installation
- LED backlit touch controls
- Perimeter aspiration
- Front strip LED lighting
- 3 speed fan
- Timer - up to 9 minutes
- 1 x aluminium grease filter
- 62dBa

[Bosch](#)  
[Dishwasher](#)

Serie | 4 fully-integrated dishwasher  
60 cm  
**SMV46GX01A**



2



R

B



Yc  
yc  
re



[Linkware Sink](#)  
[Mixer](#)



[Oliveri Kitchen](#)  
[Sink](#)



Santorini

Made in Italy 

**Santorini Black  
Double Bowl  
Undermount  
Sink**

 Favourite



## Bathroom

[Raymor](#)  
[Basin](#)  
[Mixer](#)

### RAVEN BASIN MIXER



Product Code: 150015

WELS Rating: WELS 4 STAR 7.5L/min

Enter Postcode to see price:



Add to wishlist

#### Features

- Brass one piece body
- Zinc die cast handle
- Powder coated matte black
- 35mm ceramic disc
- Paddle handle
- 101mm fixed spout
- 4 star, 7.5 litres per minute
- Mixer height 86mm

[Raymor](#)  
[Bath](#)  
[Wall](#)  
[Mixer](#)

### RAVEN WALL BASIN/BATH MIXER 220MM SPOUT



Product Code: 152829

WELS Rating: WELS 4 STAR 7.5L/min

Enter Postcode to see price:



Add to wishlist

#### Features

- Supplied as a kit
- 35mm ceramic disc
- No breach supplied

[Raymor](#)  
[Shower](#)  
[Wall](#)  
[Mixer](#)

### RAVEN BATH/SHOWER MIXER WITH DIVERTER



Product Code: 152843

Enter Postcode to see price:



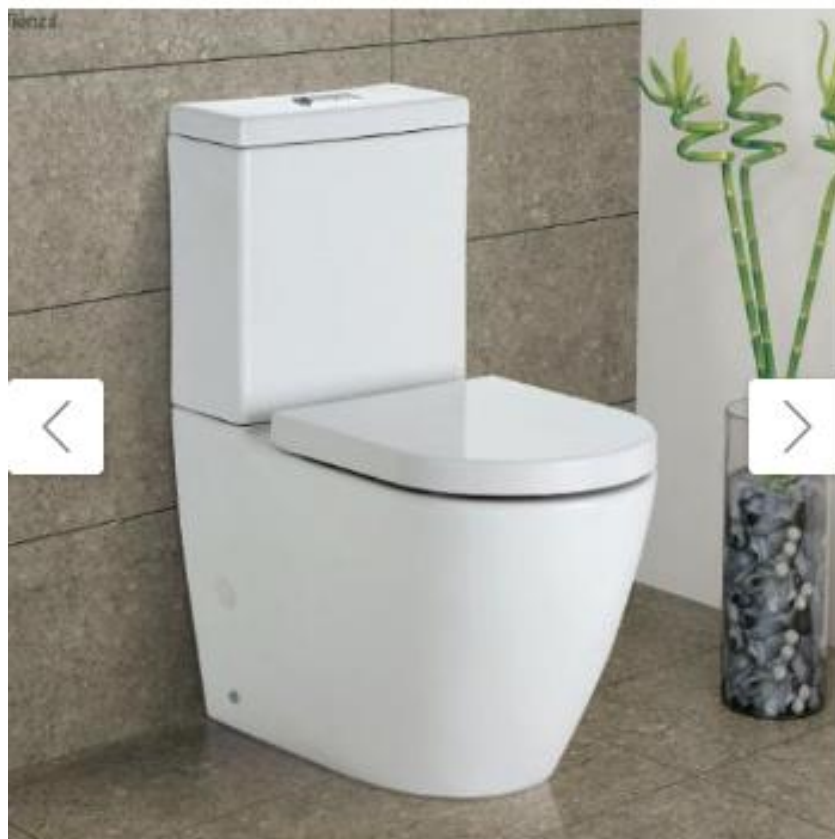
Add to wishlist

#### Features

- Brass 4-port one piece body
- Zinc die cast handle
- Powder coated matte black
- 35mm ceramic disc
- Paddle handle
- 185mm x 65mm wall plate



[Fienza  
Toilet  
Suite](#)



[Raymor  
Bath  
Tub](#)

## ARUBA BATH BACK TO WALL 1700MM



Enter Postcode to see price:

[+ Add to wishlist](#)

### Features

- Back-to-wall freestanding bath desgin
- Tile bead (H10mm x W8mm)
- Can be installed into a tiled wall or sit against it
- Plug and waste not included

Product Code: 153150

Bathroom Accessories


[Oliveri](#)  
[Double](#)  
[Towel Rail](#)

NEW



Athens

**Athens Matte  
Black Double  
Towel Rail  
600mm**

 Favourite



[Oliveri](#)  
[Single](#)  
[Towel Rail](#)

NEW



Athens

**Athens Matte  
Black Single  
Towel Rail  
600mm**

 Favourite



[Oliveri](#)  
[Robe](#)  
[Hook](#)

NEW



Athens

**Athens Matte  
Black Robe  
Hook**

 Favourite



[Oliveri Toilet Roll Holder](#)

NEW



Athens

**Athens Matte Black Toilet Roll Holder**

♥ Favourite



[Oliveri Towel Ring](#)

NEW



Athens

**Athens Matte Black Towel Ring**

♥ Favourite



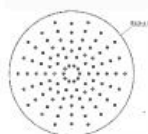
**Raymor Shower Overhead**

**Shower Overhead**

Raymor  
*more like you*



WELS 3 STAR gL/min



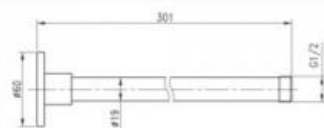
2 years shower head, seals  
1 year finish, labour



- Single function, ball joint
- 225mm
- TPE nipples
- 12mm thickness



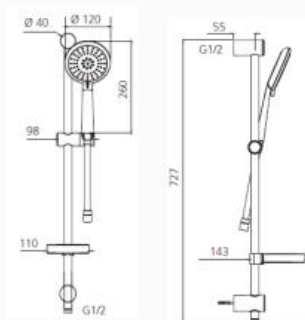
- Tradelink code – 167763 : 168637
- Product code – Raven



Ceiling mount  
300mm arm reach  
Straight, round arm

**Oliveri Hand Shower on Rail**

**Hand Shower on Rail**



- Tradelink code –158921
- Product code— CO51580MB

Oliveri

Adjustable hand shower holder, anti-twist hose, 3 spray functions, soap dish

3 years main body; 2 years shower head, shower arm, plastic hand piece, hose, seals, o-rings; 1 year finish and labour (refer to oliveri.com.au)

3 Stars, 9L per minute

Tradelink

Oliveri Ensuite Basin	<div data-bbox="379 107 574 141" data-label="Section-Header"> <h3>Ensuite Basin</h3> </div> <div data-bbox="347 163 810 488" data-label="Image"> </div> <div data-bbox="778 163 954 219" data-label="Text"> <p>Oliveri</p> </div> <div data-bbox="1106 163 1412 212" data-label="List-Group"> <ul style="list-style-type: none"> <li>• Tradelink code –159715</li> <li>• Product code -- DU7130F</li> </ul> </div> <div data-bbox="962 230 1412 436" data-label="Image"> </div> <div data-bbox="762 465 1153 488" data-label="Text"> <p>10 years replacement products, 1 year parts and labour</p> </div>
Seima Powder Room Basin	<div data-bbox="379 499 673 533" data-label="Section-Header"> <h3>Powder Room Basin</h3> </div> <div data-bbox="336 607 719 853" data-label="Image"> </div> <div data-bbox="730 589 943 633" data-label="Text"> <p>SEIMA</p> </div> <div data-bbox="799 667 917 763" data-label="Text"> <p>Integrated overflow. Vitreous china. Gloss. White.</p> </div> <div data-bbox="1029 555 1342 607" data-label="List-Group"> <ul style="list-style-type: none"> <li>• Tradelink code –15041038</li> <li>• Product code--191136</li> </ul> </div> <div data-bbox="751 801 917 862" data-label="Image"> </div> <div data-bbox="1018 656 1257 824" data-label="Image"> </div> <div data-bbox="1321 607 1460 853" data-label="Image"> </div>
Bathroom Combination	<div data-bbox="379 873 687 907" data-label="Section-Header"> <h3>Bathroom combination</h3> </div> <div data-bbox="359 920 715 1227" data-label="Image"> </div> <div data-bbox="837 965 1074 1227" data-label="Image"> </div> <div data-bbox="1125 920 1348 1227" data-label="Image"> </div>

Laundry	
Oliveri Laundry Trough	<div data-bbox="427 1384 646 1417" data-label="Section-Header"> <h3>Laundry Trough</h3> </div> <div data-bbox="403 1458 651 1731" data-label="Image"> </div> <div data-bbox="799 1485 1010 1709" data-label="Image"> </div> <div data-bbox="1106 1435 1380 1485" data-label="List-Group"> <ul style="list-style-type: none"> <li>• Tradelink code – 150582</li> <li>• Product code – EE30U</li> </ul> </div> <div data-bbox="1157 1541 1321 1585" data-label="Text"> <p>Oliveri</p> </div> <div data-bbox="1141 1659 1353 1682" data-label="Text"> <p>Lifetime manufacturer's warranty</p> </div>
Laundry Mixer	<div data-bbox="432 1760 627 1794" data-label="Section-Header"> <h3>Laundry Mixer</h3> </div> <div data-bbox="419 1809 683 2101" data-label="Image"> </div> <div data-bbox="400 2078 544 2101" data-label="Text"> <p>WELS 4 STAR 7.5L/min</p> </div> <div data-bbox="874 1843 1066 2123" data-label="Image"> </div> <div data-bbox="1109 1809 1380 1861" data-label="List-Group"> <ul style="list-style-type: none"> <li>• Tradelink code –167771</li> <li>• Product code – Projix</li> </ul> </div> <div data-bbox="1114 2033 1433 2101" data-label="Text"> <p>15 years - ceramic disc cartridge ~ 10 years for commercial use 7 years - body, spout, handle 2 years - seals, tails, fittings, aerators 1 year - finish, labour</p> </div> <div data-bbox="1214 2107 1348 2134" data-label="Text"> <p>Tradelink</p> </div>

## House 2 & 4 Chrome

### Kitchen Appliances

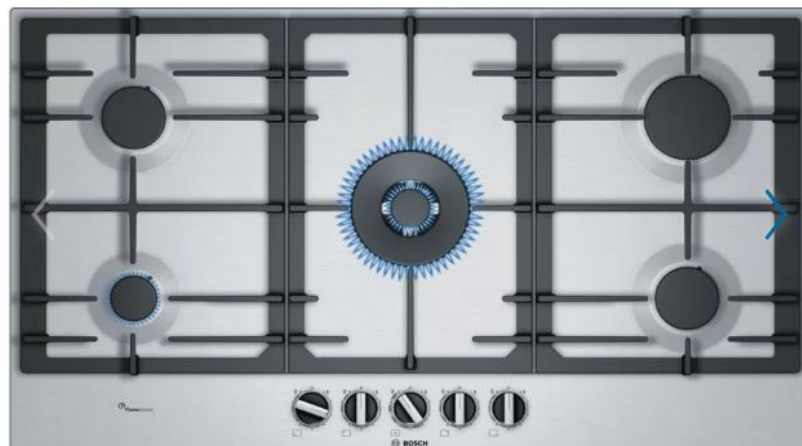
#### [Bosch Oven](#)

Serie | 8 Built-in oven  
Stainless steel  
**HBG633BS1A**



#### [Bosch Steel 900 Cooktop](#)

Serie | 6 Gas hob  
90 cm Stainless steel  
**PCR9A5B90A**





[Smeg](#)  
[Ranghood](#)



[Bosch](#)  
[Dishwasher](#)

Serie | 4 fully-integrated dishwasher  
60 cm  
**SMV46GX01A**



2'



Ri

B

Yc  
yc  
re

## [Dolf Mixer](#)

**VIXEN**



### Vixen Retractable Sink Mixer Chrome



Sophisticated, spirited and stylish. The Vixen range is stunning in both looks and functionality, with a two tone finish making it an ideal kitchen feature. Available in chrome, matte black with chrome accents or white with chrome accents, let yourself be seduced by Vixen.

- Pull down, retractable hand piece for added versatility
- European SoftPEX hoses provide superior durability, longer life and are free from impurities
- Available in chrome, matte black with chrome accents or white with chrome accents \*Images are only for illustration purpose. Consumers are encouraged to seek professional advice on the suitability the installation at time of purchase

#### SPECIFICATION

<b>Product Type</b>	Kitchen/Laundry
<b>WELS STAR RATING AND FLOW RATE</b>	WELS 4 Rated, 7.5L/min
<b>COLOUR</b>	Chrome
<b>MATERIAL</b>	Other
<b>CARTRIDGE TYPE</b>	Ceramic Disc Cartridge



## [Everlast Kitchen Sink](#)

### Everhard Squareline Plus Double Bowl Sink 73179



## Bathroom

[Raymor](#)  
[Basin](#)  
[Mixer](#)

### ALPHA BASIN MIXER



Product Code: 150008

WELS Rating: WELS 4 STAR 7.5L/min

Enter Postcode to see price:



Add to wishlist

#### Features

- Brass one piece body
- Zinc die cast handle
- Chrome plated
- 35mm ceramic disc
- Paddle handle
- 110mm fixed spout
- 4 star, 7.5 litres per minute
- Mixer height 92mm

[Raymor](#)  
[Bath](#)  
[Wall](#)  
[Mixer](#)

### ALPHA WALL BASIN/BATH MIXER 220MM SPOUT



Product Code: 152827

WELS Rating: WELS 4 STAR 7.5L/min

Enter Postcode to see price:



Add to wishlist

#### Features

- Supplied as a kit
- 35mm ceramic disc
- No breech supplied

[Raymor](#)  
[Shower](#)  
[Wall](#)  
[Mixer](#)

### ALPHA BATH/SHOWER DIVERTER MIXER



Product Code: 150014

Enter Postcode to see price:

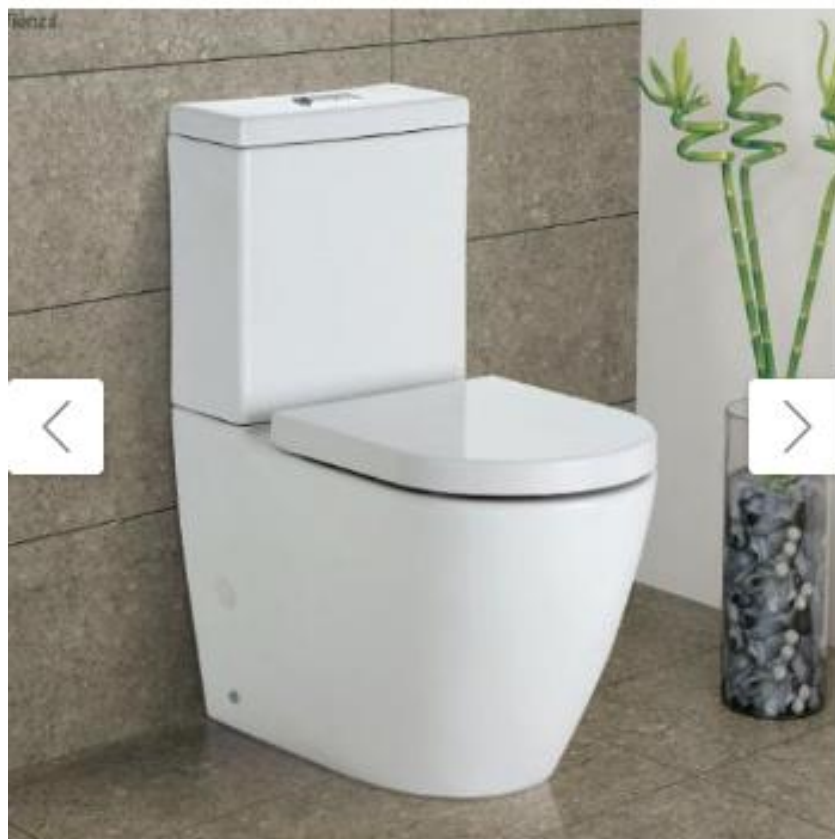


Add to wishlist

#### Features

- Brass 4-port one piece body
- Zinc die cast handle
- Chrome plated
- 35mm ceramic disc
- Paddle handle
- 185mm x 65mm wall plate

[Fienza  
Toilet  
Suite](#)



[Raymor  
Bath  
Tub](#)

## ARUBA BATH BACK TO WALL 1700MM



Enter Postcode to see price:

[+ Add to wishlist](#)

### Features

- Back-to-wall freestanding bath desgin
- Tile bead (H10mm x W8mm)
- Can be installed into a tiled wall or sit against it
- Plug and waste not included

Product Code: 153150

**Bathroom Accessories**

[Oliveri Double Towel Rail](#)

NEW



Athens

**Athens Chrome Double Towel Rail 600mm**

 Favourite



[Oliveri Single Towel Rail](#)

NEW



Athens

**Athens Chrome Single Towel Rail 600mm**

 Favourite



[Oliveri Robe Hook](#)

NEW






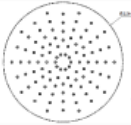

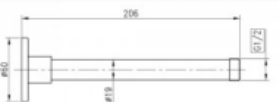

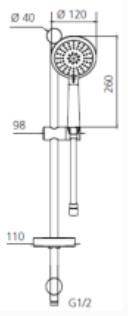
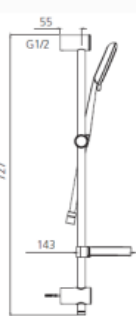
Athens

**Athens Chrome Robe Hook**

 Favourite





<p><a href="#">Oliveri Toilet Roll Holder</a></p>	<div>NEW</div> 	<div>Athens</div> <h3>Athens Chrome Toilet Roll Holder</h3> <div> <div>Favourite</div> <div> </div> </div>
<p><a href="#">Oliveri Towel Ring</a></p>	<div>NEW</div> 	<div>Athens</div> <h3>Athens Chrome Towel Ring</h3> <div> <div>Favourite</div> </div>
<p>Raymor Overhead Shower</p>	<div>Shower Overhead</div> <div>     </div> <div> <p>WELS 3 STAR gL/min</p> <p>5 years - main body 2 years - shower head, shower arm, hand piece, hose, seals 1 year - finish, labour</p> <ul style="list-style-type: none"> <li>• Single function, ball joint</li> <li>• 225mm</li> <li>• TPE nipples</li> <li>• 12mm thickness</li> </ul> <p>Chrome plated Brass Ceiling mount 200mm arm reach Straight, round arm</p> </div> <div> <p>Tradelink code – 167762 : 168635</p> <p>Product code – Alpha</p> </div>	
<p>Oliveri Shower on Rail</p>	<div>Hand Shower on Rail</div> <div>    </div> <div> <p>Adjustable hand shower holder, anti-twist hose, 3 spray functions, soap dish</p> <p>3 years main body; 2 years shower head, shower arm, plastic hand piece, hose, seals o'rings; 1 year finish and labour (refer to <a href="#">oliveri.com.au</a>)</p> <p>3 Stars, 9L per minute</p> </div> <div> <p>Tradelink code –158920</p> <p>Product code— CO51580CR</p> <p><i>Oliveri</i></p> </div>	

<p>Ensuite Basin</p>	<div> <div>Ensuite Basin</div> <div>  <p><i>Oliveri</i></p> <p>10 years replacement products, 1 year parts and labour (refer to Service &amp; Warranty page)</p> </div> <div>  <p>460mm x 400mm x 140mm</p> </div> <div> <ul style="list-style-type: none"> <li>• Tradelink code –159715</li> <li>• Product code – DU7130F</li> </ul> </div> </div>
<p>Powder Room Basin</p>	<div> <div>Powder Room Basin</div> <div>  <p><b>SEIMA</b></p> <p>Integrated overflow. Vitreous china. Gloss. White.</p> </div> <div>  <p>450mm x 260mm x 125mm</p> </div> <div>  </div> <div> <ul style="list-style-type: none"> <li>• Tradelink code –15041038</li> <li>• Product code –191136</li> </ul> </div> </div>
<p>Bathroom Combination</p>	<div> <div>Bathroom combination</div> <div>  </div> </div>
<p>Laundry</p>	
<p>Oliveri Laundry Trough</p>	<div> <div>Laundry Trough</div> <div>  </div> <div>  <p>350mm x 405mm</p> </div> <div> <p><i>Oliveri</i></p> <p>Lifetime manufacturer's warranty</p> </div> <div> <ul style="list-style-type: none"> <li>• Tradelink code – 150582</li> <li>• Product code – EE30U</li> </ul> </div> </div>
<p>Laundry Mixer</p>	<div> <div>Laundry Mixer</div> <div>  </div> <div>  <p>WELS 4 STAR 7.5L/min</p> </div> <div> <p><b>Raymor</b> more like you</p> <p>15 years - ceramic disc cartridge 10 years for commercial use 7 years - body, spout, handle 2 years - seals, tails, fittings, aerators 1 year - finish, labour</p> </div> <div> <ul style="list-style-type: none"> <li>• Tradelink code –133366</li> <li>• Product code – Projix</li> </ul> </div> </div>

## Heating and Cooling + Extras For Houses

### [Rinnai Water Heating \(All Houses\)](#)



#### General Information

Number Of People	2-3
Gas Type	Natural Gas
Installation	External
Product Type	Gas Continuous Flow

#### Technical Information

Star Rating	6 Star
Delivery Capacity (At 25 Deg C Rise)	26 ltr/min
Gas Consumption	199 MJ/h
Cold Water Connections	20 mm
Gas Connection	20 mm

### [Rinnai Hot Water Control \(All Houses\)](#)



### [Air Conditioner for Houses 2,3,4](#)

### [10kw Samsung Ducted with digital controller](#)



Clipsal Iconic Range  
PowerPoints and  
switches

(with skin  
adaptability)



Due to Sizing, Houses 3 and 4 will have a different bathtub

<p><a href="#">House 3 and 4 Bathtub</a></p>	<div><h3>RECLINE II RECTANGLE BATH 1650MM</h3><div><div><p>Enter Postcode to see price:</p><div>Postcode</div><div>Available Now</div><div>Add to wishlist</div></div><div><p>Product Code: 134172</p><p><b>Features</b></p><ul style="list-style-type: none"><li>• Materials Sanitary Grade Acrylic</li><li>• Size 1650mm x 715mm x 380mm</li><li>• Waste Position End waste</li></ul></div></div></div>
--	--

And House 1 will have a larger air conditioner since it is larger

<p><a href="#">Air Conditioner for Houses 1</a></p> <p><a href="#">12.5kw Samsung Ducted with digital controller</a></p>	<div></div>
--	---



## Bruse Real Estate

### For 3 Generations 1957 - >>>

The directors of **BRUSE Real Estate**, Bevan and Theon Bruse, are proud to say that the **Bruse** name has been associated with real estate for three generations. Sydney Bruse operated as a real estate agent for many years in the Payneham and Marryatville districts of South Australia. His son Bevan, grandson Theon, and Bevan's wife Jill have kept the name alive in the real estate industry.



Real estate is well established in the **Bruse** family. They are enthusiastic and extremely passionate about the industry. Bevan originally joined his father in real estate at the young age of 20. Bevan joined Brock Partners when the company commenced some 25 years ago. Theon joined Bevan at Brock Partners 18 years ago until they opened a franchise in the Eastern suburbs.

Bevan and Theon Bruse decided to open the "**Bruse**" agency, a boutique agency suitable to their select clients to offer them a service that they believe is ahead of the rest. Bevan's wife Jill is now part of the **Bruse** agency in a business management capacity.

The **Bruse** office is active in **selling property** and **property management**. The **Bruse** office is wonderfully positioned on Greenhill Road, at Toorak Gardens just opposite all the banks and Burnside Village. This prominent position has excellent car parking at the rear of the building, making it easier for buyers, sellers, landlords, tenants and other clients to call into the office. It is also extremely close to the city and business centre.

The interior of the office is very bright, light and airy with modern designer décor. The **Bruse** staff enjoy the environment and the social life of working close to one of Adelaide's premium shopping centres, Burnside Village, and the excellent local restaurants and amenities. **BRUSE Real Estate** welcomes you to call into their office whenever you pass by.

357 Greenhill Rd Toorak Gardens  
Ph: 8431 8181 F: 8431 8893  
Abn: 34 122 770 068  
Rla: 181689  
[www.bruse.com.au](http://www.bruse.com.au)