



3/13 MUNRO STREET TRARALGON VIC 3844

Prepared on 9th January 2025



Anthony Bloomfield
ONE AGENCY LATROBE VALLEY

PO Box 9126
TRARALGON VIC 3844
m: 0455 303 750

anthony@oneagencylv.com.au

Comparable Rentals

1 2/25 PETERKIN STREET TRARALGON VIC 3844



1 1 - 637m² 54m²
 Year Built 1975 DOM 17 days
 Listing Date 27-Nov-23 Distance 0.12km
 Listing Price \$330 per Week

2 3/64 DAVIDSON STREET TRARALGON VIC 3844



1 1 - 733m² 54m²
 Year Built 1975 DOM 15 days
 Listing Date 06-Sep-24 Distance 0.14km
 Listing Price \$320 WEEKLY

3 3/16-18 PETTIT STREET TRARALGON VIC 3844



2 1 1 183m² 84m²
 Year Built 1980 DOM 7 days
 Listing Date 02-Jan-25 Distance 0.41km
 Listing Price \$320 per week

4 5/31 DAVIDSON STREET TRARALGON VIC 3844



2 1 - 99m² 70m²
 Year Built 1970 DOM 21 days
 Listing Date 15-Oct-24 Distance 0.05km
 Listing Price \$320 pw

5 3/16 BERRY STREET TRARALGON VIC 3844



2 1 - 143m² 101m²
 Year Built 1980 DOM 36 days
 Listing Date 29-Feb-24 Distance 0.21km
 Listing Price \$380PW // AVAIL. 08.03.2024

DOM = Days on market * This data point was edited by the author of this CMA and has not been verified by CoreLogic

Comparable Rentals

6 308 FRANKLIN STREET TRARALGON VIC 3844



2 1 1 330m² 97m²
 Year Built 1997 DOM 32 days
 Listing Date 22-Sep-23 Distance 0.76km
 Listing Price \$380 PW / AVAIL. 27.10.2023

7 3/9 MUNRO STREET TRARALGON VIC 3844



3 1 1 390m² 111m²
 Year Built 1997 DOM 78 days
 Listing Date 13-Nov-23 Distance 0.05km
 Listing Price \$380

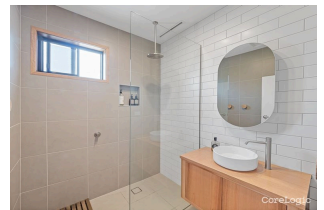
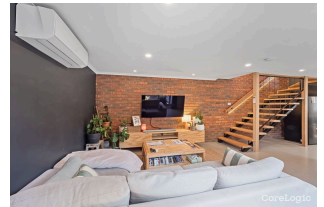
8 5/33-35 PETERKIN STREET TRARALGON VIC 3844



2 1 2 178m² 76m²
 Year Built 1980 DOM 9 days
 Listing Date 27-Nov-24 Distance 0.17km
 Listing Price \$340 PW / AVAIL. 24.01.2025

Summary

3/13 MUNRO STREET TRARALGON VIC 3844



Appraisal price range
\$360 - \$380 Per Week

Disclaimer

The State of Victoria owns the copyright in the Property Sales Data and reproduction of that data in any way without the consent of the State of Victoria will constitute a breach of the Copyright Act 1968 (Cth). The State of Victoria does not warrant the accuracy or completeness of the Property Sales Data and any person using or relying upon such information does so on the basis that the State of Victoria accepts no responsibility or liability whatsoever for any errors, faults, defects or omissions in the information supplied.

The Appraisal Amount contained in the report may have been manually provided by the Agent; or may be based on an automated valuation model estimate provided by CoreLogic ('AVM Estimated Value'). AVM Estimated Values are current at the date of the publication only. It is computer generated and is not a professional appraisal of the subject property and should not be relied upon in lieu of appropriate professional advice. The accuracy of the methodology used to develop the AVM Estimated Value, the existence of the subject property, and the accuracy of the AVM Estimated Value and all rule sets provided are estimates based on available data and are not guaranteed or warranted. CoreLogic excludes all liability for any loss or damage arising in connection with the Appraisal Amount and/or AVM Estimated Value.

Whilst all reasonable effort is made to ensure the information in this publication is current, CoreLogic does not warrant the accuracy or completeness of the data and information contained in this publication and to the full extent not prohibited by law excludes all for any loss or damage arising in connection with the data and information contained in this publication.