




Dingle Partners

- | Estate Agents
- | Sales
- | Property Management
- | Project Management
- | Consultants



9/86-90 Hotham Street, East Melbourne

2  **1**  **1** 

Additional Information

- Secure parking
- Spacious and sunny balcony
- Low-rise and leafy boutique building

Rates:

Water Rates – \$615.88 per annum approx.
Council Rates - \$1,641 per annum approx.
Body Corp - \$1,289.55 quarterly approx.

Chattels:

All fixed floor coverings, electric light fittings and fixtures, window furnishings

Preferred Settlement:

30/60/90days – 10% deposit

Schools:

| | |
|------------------------------|--------|
| Richmond West Primary School | 0.7 km |
| Collingwood College | 1.3 km |
| Holmes Secondary College | 1.4 km |
| St Joseph's School | 1.5 km |

Public Transportation:

| | |
|--------------------------------------|-------|
| Tram: 13-Simpson St / Wellington Pde | 271 m |
| Bus: West Richmond / Hoddle St | 261 m |
| Train: West Richmond Railway Station | 358 m |

Other Amenities

| | |
|-----------------------------|-------|
| Fitzroy Gardens | 611 m |
| Melbourne Cricket Ground | 742 m |
| St Vincent's Medical Centre | 376 m |
| Yarra Park | 653 m |

AUCTION ON 9TH OF APRIL AT 12:00 PM

CONTACT JAY DOMINGO 0436 697 582

Dingle Partners Pty Ltd. ABN:67 099 681 188 Tel:61 3 9614 6688 Fax:61 3 9629 8811 www.dinglepartners.com.au

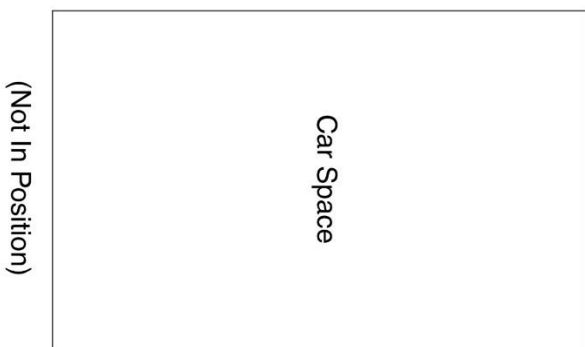
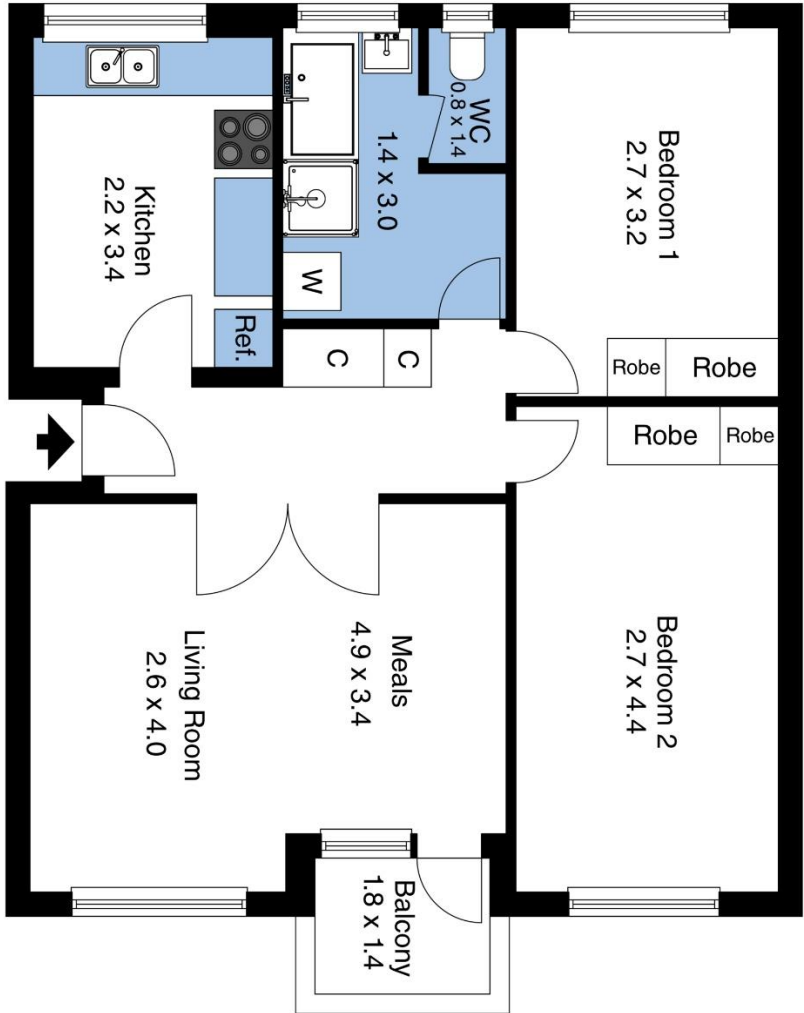
Directors: Malcolm Dingle FREI AAPI, Robert Eggers AREI, CEA (REIV), Paul Harberts BEng

📍 **Head Office:** 39 Queen Street, Melbourne VIC 3000 📍 Carlton 📍 Richmond 📍 St Kilda Rd

Dingle Partners

- | Estate Agents
- | Sales
- | Property Management
- | Project Management
- | Consultants

Dingle Partners



The floor plan is not to scale; measurements are indicative and in metres. Exterior elements are not in position. Plans should not be relied on. Interested parties should make and rely on their own enquiries.

Produced by DIAKRIT