



2/50-54 KAY STREET TRARALGON VIC 3844

Prepared on 21st May 2025



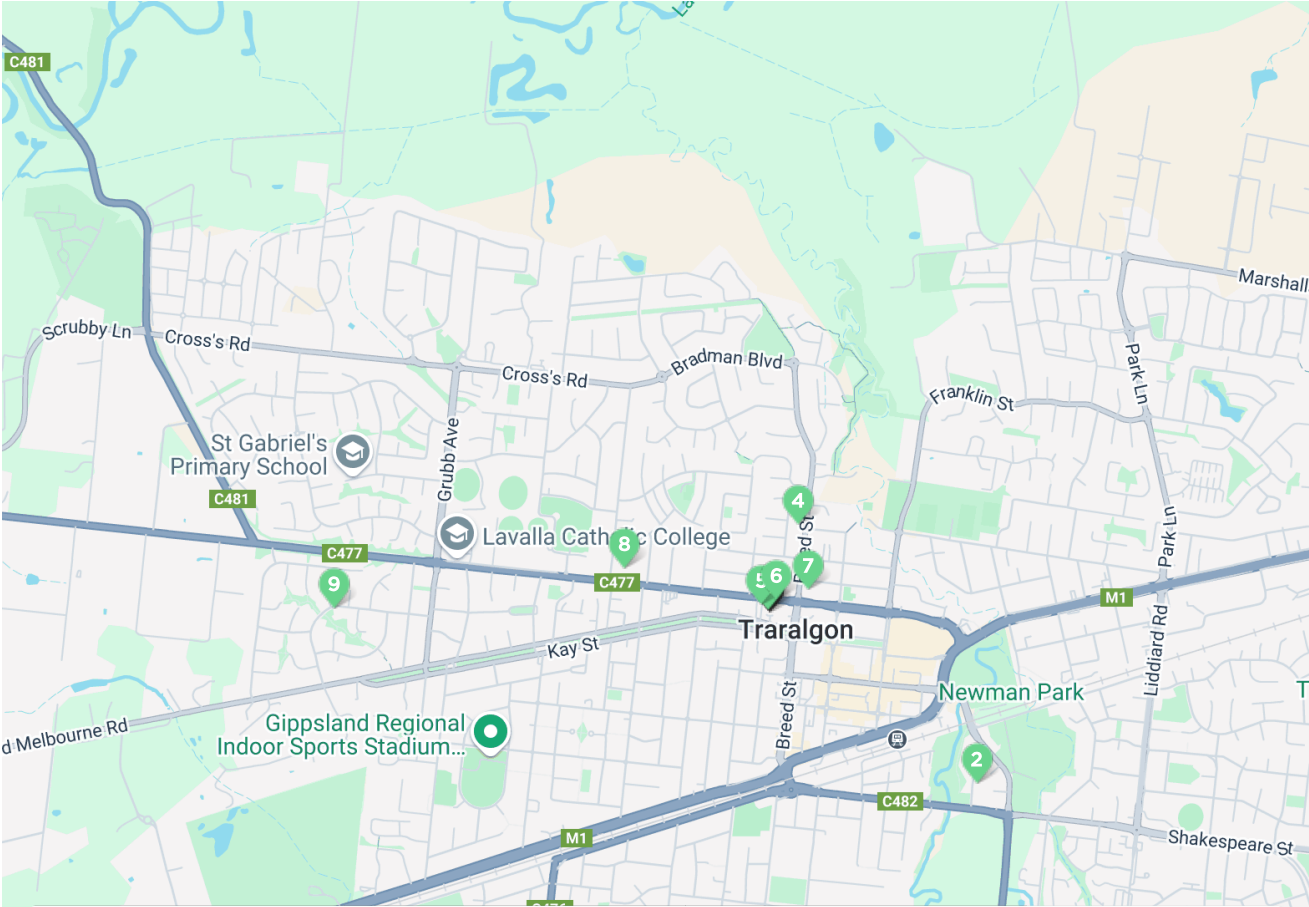
Anthony Bloomfield
ONE AGENCY LATROBE VALLEY

14C Hotham Street
Traralgon VIC 3844

m: 0455 303 750

anthony@oneagencylv.com.au

Comps Map: Rentals



1 9/50-54 KAY STREET TRARALGON VIC 3844	3	2	-	\$380
2 3/6 TENNYSON STREET TRARALGON VIC 3844	3	2	1	\$460
3 5/50-54 KAY STREET TRARALGON VIC 3844	2	1	1	\$460
4 2/89 BREED STREET TRARALGON VIC 3844	3	2	1	\$415
5 2/56 KAY STREET TRARALGON VIC 3844	2	1	2	\$370
6 2/63 GREY STREET TRARALGON VIC 3844	2	1	1	\$410
7 6/56-58 GREY STREET TRARALGON VIC 3844	3	1	2	\$430
8 1/126 GREY STREET TRARALGON VIC 3844	3	1	1	\$420
9 31A PHILLIP STREET TRARALGON VIC 3844	3	1	2	\$410

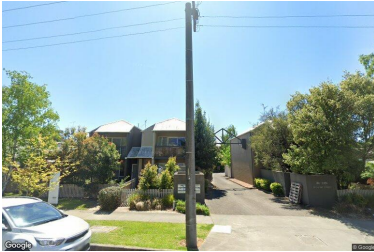


Map data ©2025 Google

* This data point was edited by the author of this CMA and has not been verified by CoreLogic

Comparable Rentals

1 9/50-54 KAY STREET TRARALGON VIC 3844



3 2 - 138m² 123m²
 Year Built 2003 DOM 28 days
 Listing Date 18-Sep-24 Distance 0km
 Listing Price \$380 pw

2 3/6 TENNYSON STREET TRARALGON VIC 3844



3 2 1 196m² 155m²
 Year Built 2004 DOM 14 days
 Listing Date 22-Jan-25 Distance 1.23km
 Listing Price \$460 PW / AVAIL. 14.02.2025

3 5/50-54 KAY STREET TRARALGON VIC 3844



2 1 1 206m² -
 Year Built 1992 DOM 9 days
 Listing Date 11-Dec-24 Distance 0km
 Listing Price \$460 PW / AVAIL. 6.01.25

4 2/89 BREED STREET TRARALGON VIC 3844



3 2 1 296m² 119m²
 Year Built 1995 DOM 34 days
 Listing Date 07-Nov-24 Distance 0.41km
 Listing Price \$415 PW / AVAIL. 20.12.24

5 2/56 KAY STREET TRARALGON VIC 3844



2 1 2 81m² 71m²
 Year Built 1980 DOM 14 days
 Listing Date 28-Mar-24 Distance 0.04km
 Listing Price \$370 PW / AVAIL 26.03.24

DOM = Days on market * This data point was edited by the author of this CMA and has not been verified by CoreLogic

Comparable Rentals

6 2/63 GREY STREET TRARALGON VIC 3844



2 1 1 271m² 64m²
 Year Built 1950 DOM 10 days
 Listing Date 04-Feb-25 Distance 0.06km
 Listing Price \$410 PW / AVAIL. 7.03.25

7 6/56-58 GREY STREET TRARALGON VIC 3844



3 1 2 273m² 110m²
 Year Built 1980 DOM 23 days
 Listing Date 12-Jun-24 Distance 0.2km
 Listing Price \$430 WEEKLY

8 1/126 GREY STREET TRARALGON VIC 3844



3 1 1 195m² 104m²
 Year Built 2006 DOM 19 days
 Listing Date 04-Apr-24 Distance 0.67km
 Listing Price \$420 WEEKLY

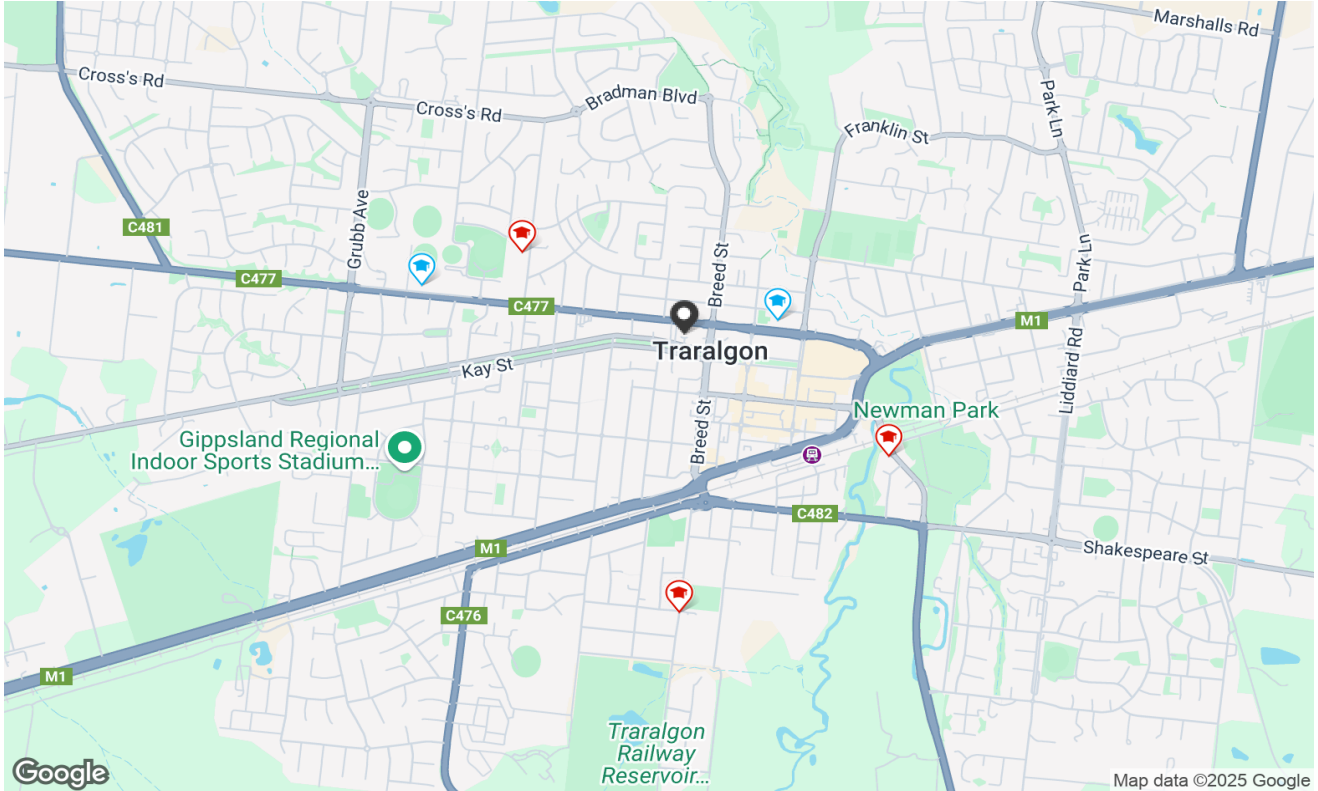
9 31A PHILLIP STREET TRARALGON VIC 3844








3 1 2 271m² 102m²
 Year Built 1982 DOM 14 days
 Listing Date 21-Nov-23 Distance 1.95km
 Listing Price \$410 WEEKLY

DOM = Days on market * This data point was edited by the author of this CMA and has not been verified by CoreLogic

Local Schools



SCHOOL ADDRESS	DISTANCE	SCHOOL TYPE	GENDER	SECTOR	YEARS
 Grey Street Primary School (Traralgon) 30-44 Grey Street Traralgon VIC 3844	0.45km	Primary	Mixed	Government	0-6
 Traralgon (Stockdale Road) Primary School 7-25 Stockdale Road Traralgon VIC 3844	0.81km	Primary	Mixed	Government	0-6
 SEDA College (Victoria) - AFL Traralgon & Multi 2 Traralgon 8 Whittakers Road Traralgon VIC 3844	1.11km	Secondary	Mixed	Non-Government	-
 Traralgon College	1.19km	Secondary	Mixed	Government	7-12
 Latrobe Special Developmental School 48-62 Hickox Street Traralgon VIC 3844	1.34km	Special	Mixed	Government	-



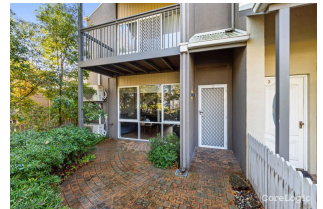
Property is within school catchment area



Property is outside school catchment area

Summary

2/50-54 KAY STREET TRARALGON VIC 3844



Appraisal price range
\$400 - \$430

Notes from your agent

Disclaimer

The State of Victoria owns the copyright in the Property Sales Data and reproduction of that data in any way without the consent of the State of Victoria will constitute a breach of the Copyright Act 1968 (Cth). The State of Victoria does not warrant the accuracy or completeness of the Property Sales Data and any person using or relying upon such information does so on the basis that the State of Victoria accepts no responsibility or liability whatsoever for any errors, faults, defects or omissions in the information supplied.

The Appraisal Amount contained in the report may have been manually provided by the Agent; or may be based on an automated valuation model estimate provided by CoreLogic ('AVM Estimated Value'). AVM Estimated Values are current at the date of the publication only. It is computer generated and is not a professional appraisal of the subject property and should not be relied upon in lieu of appropriate professional advice. The accuracy of the methodology used to develop the AVM Estimated Value, the existence of the subject property, and the accuracy of the AVM Estimated Value and all rule sets provided are estimates based on available data and are not guaranteed or warranted. CoreLogic excludes all liability for any loss or damage arising in connection with the Appraisal Amount and/or AVM Estimated Value.

Product Data licensed by CoreLogic under a Creative Commons Attribution licence. For details regarding licence, data source, copyright and disclaimers, see www.corelogic.com.au/aboutus/thirdpartyrestrictions.html

All information relating to Schools provided by CoreLogic is as a courtesy only. CoreLogic does not make any representations regarding the accuracy or completeness of the data. You should contact the School directly to verify this information.

Whilst all reasonable effort is made to ensure the information in this publication is current, CoreLogic does not warrant the accuracy or completeness of the data and information contained in this publication and to the full extent not prohibited by law excludes all liability for any loss or damage arising in connection with the data and information contained in this publication.