

OPPORTUNITY AWAITS!

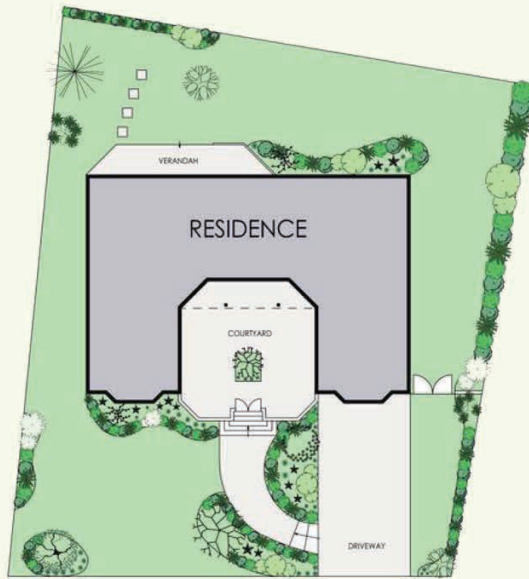
APPEALING FULL BRICK FAMILY RESIDENCE IN PRIME EAST SIDE
ENDLESS POTENTIAL TO RENOVATE OR BUILD YOUR DREAM HOME

17 GANMAIN ROAD, PYMBLE

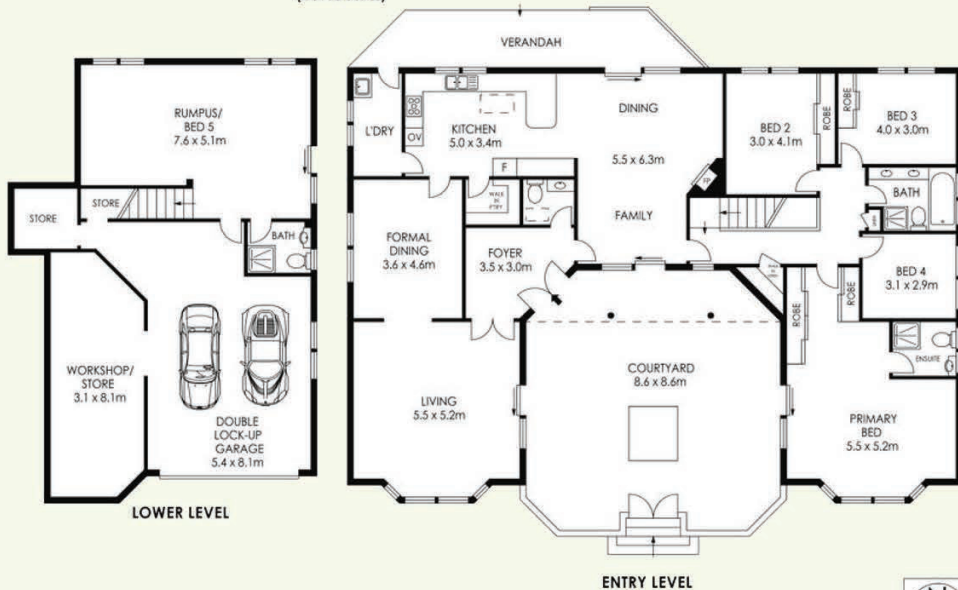
4  3.5  2 

View
as advertised or by appointment

FOR SALE



SITE PLAN
(NOT TO SCALE)



APPROX. LAND SIZE = 1,003m²

PLANS SHOWN ONLY INDICATIVE OF LAYOUT. DIMENSIONS ARE APPROXIMATE.



17 Ganmain Road, Pymble



Luschwitz
REAL ESTATE

Josh Luschwitz 0412 067 676 josh@luschwitz.com.au
Sue Hodges 0423 732 487 sue@luschwitz.com.au

THIS PROPERTY OFFERS AN EXCITING OPPORTUNITY FOR FAMILIES, RENOVATORS, AND INVESTORS. SITUATED ON A GENEROUS 1,003 SQM BLOCK WITH A WIDE 29M FRONTAGE, THIS FULL BRICK HOME BOASTS IMPRESSIVE POTENTIAL FOR RENOVATION OR A COMPLETE REBUILD, UNRESTRICTED BY HERITAGE OR CONSERVATION ZONING (STCA). NESTLED ON THE HIGH SIDE OF A PEACEFUL CUL-DE-SAC, IT COMBINES PRIVACY WITH PROXIMITY TO LOCAL TRANSPORT, PARKS, AND HIGHLY SOUGHT-AFTER SCHOOLS.

GENEROUS LIVING SPACES: THE HOME OFFERS 4 SPACIOUS BEDROOMS, 3 BATHROOMS, A POWDER ROOM, AND A FLEXIBLE FLOOR PLAN. A FORMAL LOUNGE, DINING AREA, AND EAT-IN KITCHEN ARE COMPLEMENTED BY A FAMILY ROOM, AND A LARGE RUMPUS/BILLIARD ROOM DOWNSTAIRS WITH A SEPARATE BATHROOM-IDEAL AS A TEENAGE RETREAT, IN-LAW ACCOMMODATION, OR HOME OFFICE.

POTENTIAL TO ADD VALUE: THIS WELL-CONSTRUCTED HOME PROVIDES AMPLE SCOPE FOR VALUE-ADDING RENOVATIONS. THE LARGE BLOCK AND PRIVATE POSITION ALSO MAKE IT PERFECT FOR THOSE LOOKING TO KNOCK DOWN AND REBUILD THEIR DREAM HOME (STCA).

