



# Luschwitz

SERVING PYMBLE FOR OVER 50 YEARS

## FOR LEASE



### 15 Denman Street, Turramurra



4



2



1

### Stroll to Station, Shops, Knox & Warrawee Public from this Superb Single Level Full Brick Residence in a quiet, tranquil location.

Welcome to 15 Denman Street, a full-brick sanctuary nestled in the heart of tranquil Turramurra, where elegance meets modern convenience. Picture yourself stepping into a world of luxury, where every room, every corner, radiates warmth and sophistication. Imagine evenings spent in the spacious formal living and dining room, where high ceilings dance with the gentle flicker of the Jotul Norwegian fireplace. Each of the four light-filled bedrooms is a testament to comfort, featuring built-in robes and ample space for rest and relaxation. A separate study ensures productivity is just a step away, offering a quiet refuge for work or study.

The heartbeat of this exquisite home is undoubtedly the modern granite kitchen. Here, culinary inspiration comes to life, enhanced by the adjoining vast casual dining and family room. It's a space where meals become moments, and every gathering is graced with an air of elegance.

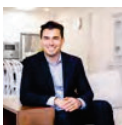
Step outside to the expansive alfresco entertaining deck, where the lush embrace of private gardens offers a backdrop of nature's finest artwork. The separate teenage retreat/gazebo is a hidden gem, a secluded oasis of relaxation amidst the greenery.

Every detail, from the beautiful brush box flooring to the ducted reverse cycle air conditioning in three zones, is meticulously curated for your comfort. Located a leisurely stroll from the station, eminent schools, and a plethora of shops, life at 15 Denman Street is as convenient as it is luxurious.

Price : \$1300 per week

View : as advertised

- Lease term: 12 months with the potential to renew
- Available now
- Sorry no pets allowed



Josh Luschwitz  
josh@luschwitz.com.au  
Bus 9449 5511 Mobile 0412 067 676

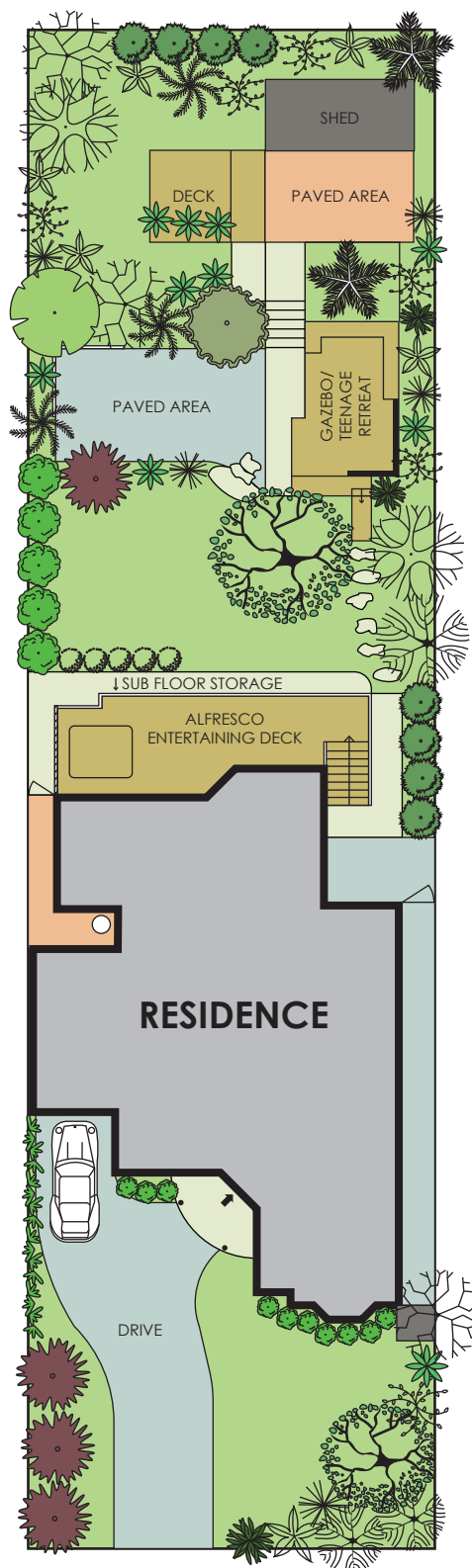
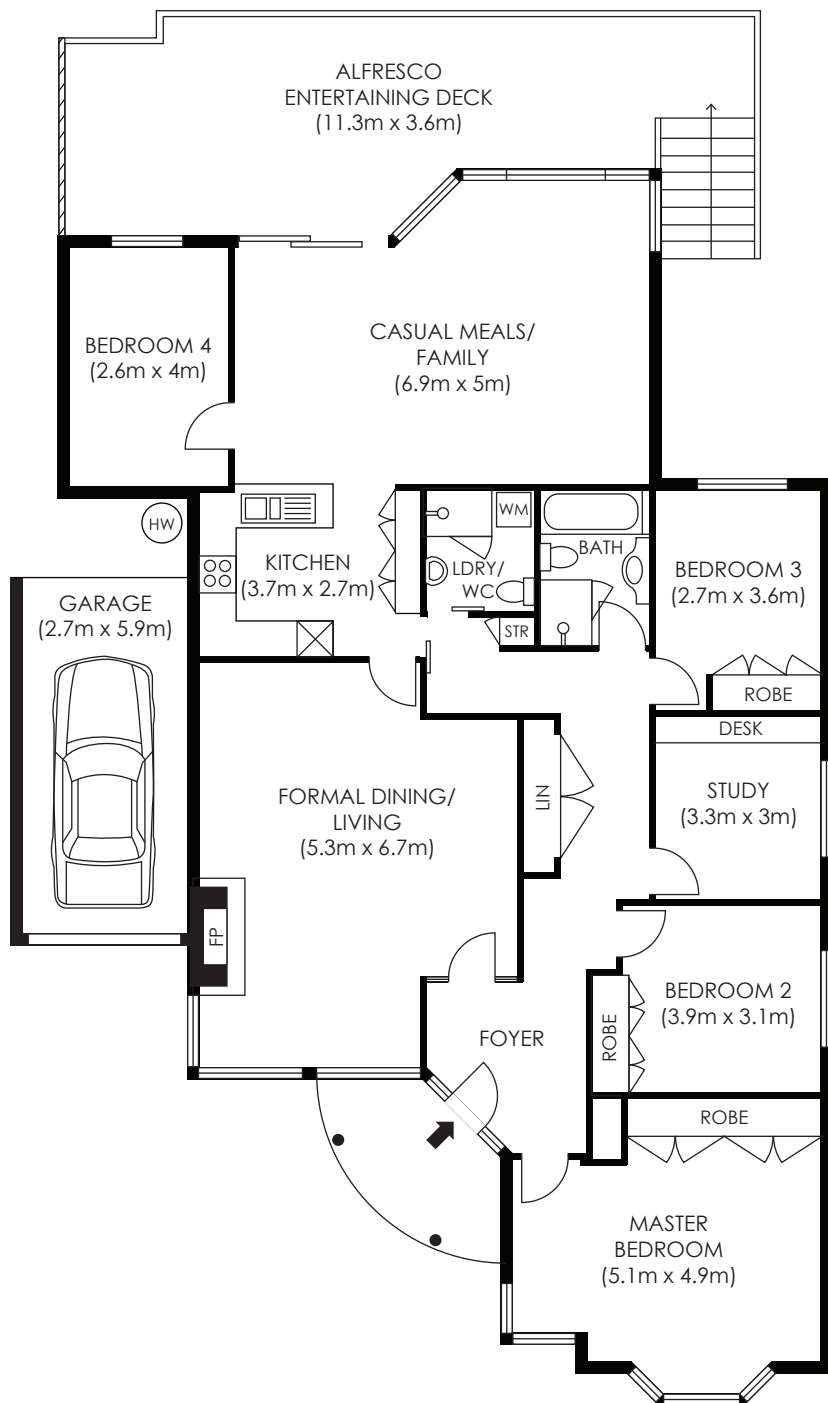
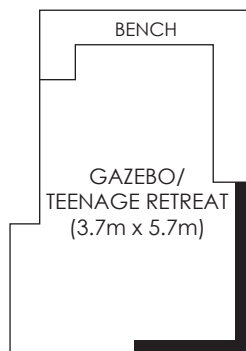


Leasing Team  
leasing@luschwitz.com.au  
Bus 9449 5511 Mobile 0412 224 319



Scan2Apply  
Rental lists and  
applications

All information contained herein is gathered from sources we believe to be reliable. However, we cannot guarantee its accuracy and interested persons should rely on their own enquiries.



**SITE PLAN**  
not to scale

**INTERNAL AREA**  
**APPROX = 161 sqm**  
**GARAGE = 16 sqm**

Plans are intended as a guide only. No representations or warranties of any nature whatsoever are given or intended and any person using this information should always rely on their own enquiries.

j interiors - real estate floor plans. jinteriors.info@gmail.com

**15 DENMAN ST, TURRAMURRA**

**scale 1:125**



**Luschwitz**