



52 HAMMERSMITH CIRCUIT TRARALGON VIC 3844

Prepared on 15th July 2024



Anthony Bloomfield
ONE AGENCY LATROBE VALLEY

PO Box 9126
TRARALGON VIC 3844
m: 0455 303 750

anthony@oneagencylv.com.au

Comparable Rentals

1 108 HAMMERSMITH CIRCUIT TRARALGON VIC 3844



3 2 2 563m² 146m²
 Year Built 2008 DOM 59 days
 Listing Date 12-Dec-23 Distance 0.19km
 Listing Price \$450 PW / AVAIL. 09.02.24

2 2 COVENTRY ROAD TRARALGON VIC 3844



3 2 2 463m² 112m²
 Year Built 2008 DOM 11 days
 Listing Date 25-Aug-23 Distance 0.22km
 Listing Price \$430 PW / AVAIL. 02.10.2023

3 5 STANFORD DRIVE TRARALGON VIC 3844



3 2 2 538m² 157m²
 Year Built 2017 DOM 15 days
 Listing Date 03-Jul-23 Distance 0.55km
 Listing Price \$530 WEEKLY

4 1/321 FRANKLIN STREET TRARALGON VIC 3844



3 2 2 381m² 139m²
 Year Built 2000 DOM 46 days
 Listing Date 19-Aug-23 Distance 0.71km
 Listing Price \$440

5 1/124 BREED STREET TRARALGON VIC 3844



3 2 2 504m² 148m²
 Year Built 2006 DOM 36 days
 Listing Date 31-Oct-23 Distance 1.97km
 Listing Price \$460 WEEKLY

DOM = Days on market * This data point was edited by the author of this CMA and has not been verified by CoreLogic

Comparable Rentals

6 19 CHRISTIAN RISE TRARALGON VIC 3844



3 2 2 609m² 137m²
 Year Built 2012 DOM 20 days
 Listing Date 03-Aug-23 Distance 0.37km
 Listing Price \$480 WEEKLY

7 118 HAMMERSMITH CIRCUIT TRARALGON VIC 3844



3 2 2 509m² 151m²
 Year Built 2010 DOM 77 days
 Listing Date 16-Nov-23 Distance 0.27km
 Listing Price \$455

8 22 SUMMERHILL ROAD TRARALGON VIC 3844

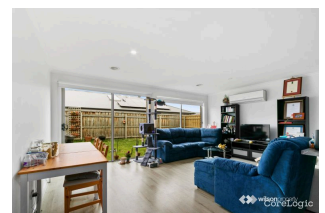
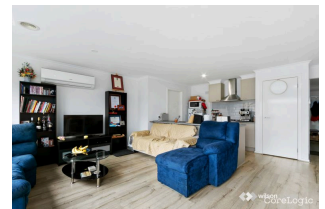


3 2 2 542m² 130m²
 Year Built 2018 DOM 11 days
 Listing Date 21-Jun-24 Distance 0.14km
 Listing Price \$500 PW / AVAIL. 15.07.2024

DOM = Days on market * This data point was edited by the author of this CMA and has not been verified by CoreLogic

Summary

52 HAMMERSMITH CIRCUIT TRARALGON VIC 3844



Appraisal price range
\$460 - \$480 Per Week

Disclaimer

The State of Victoria owns the copyright in the Property Sales Data and reproduction of that data in any way without the consent of the State of Victoria will constitute a breach of the Copyright Act 1968 (Cth). The State of Victoria does not warrant the accuracy or completeness of the Property Sales Data and any person using or relying upon such information does so on the basis that the State of Victoria accepts no responsibility or liability whatsoever for any errors, faults, defects or omissions in the information supplied.

The Appraisal Amount contained in the report may have been manually provided by the Agent; or may be based on an automated valuation model estimate provided by CoreLogic ('AVM Estimated Value'). AVM Estimated Values are current at the date of the publication only. It is computer generated and is not a professional appraisal of the subject property and should not be relied upon in lieu of appropriate professional advice. The accuracy of the methodology used to develop the AVM Estimated Value, the existence of the subject property, and the accuracy of the AVM Estimated Value and all rule sets provided are estimates based on available data and are not guaranteed or warranted. CoreLogic excludes all liability for any loss or damage arising in connection with the Appraisal Amount and/or AVM Estimated Value.

Whilst all reasonable effort is made to ensure the information in this publication is current, CoreLogic does not warrant the accuracy or completeness of the data and information contained in this publication and to the full extent not prohibited by law excludes all for any loss or damage arising in connection with the data and information contained in this publication.