



## House & Land Package

From **\$1,045,947\***

## Oakdale 255

4 Beds | 2.5 Baths | 2 Cars

**Lot 7 Solera Court, Miaden Gully**

Land Area: 1500 m<sup>2</sup>

Contact **Tim Carnell** on **0466 647 601**

### Inclusions:

- + Evaporative Cooling
- + Double Glazed Windows
- + Luxury Flooring Throughout
- + Quality Fixtures and Fittings
- + Site Cost Allowance
- + Driveway



\* Price listed is indicative only and does not include stamp duty, legal fees or conveyancing costs. Images may depict optional upgrades including fixtures, fencing, landscaping, features, facades, finishes and/or other items which are not included in the stated price. Further information overleaf. For further information, please talk to a New Homes Consultant or visit our website at <https://www.gjgardner.com.au/house-and-land-pricing>.



\* Package price is based on Oakdale 255 standard floor plan and standard façade (may be smaller than façade shown). Package may be subject to developer's design review panel, council final approval and G.J. Gardner Homes procedure of purchase. Package price excludes stamp duty on land, legal fees and conveyancing costs (including 6 Legal/74189757\_2 transfer of title and searches). Prices are current as of March 5, 2025 and are inclusive of GST. Prices may change without notice. Packages are subject to availability. Package subject to two separate contracts relating to the building and the land respectively. Photographs may depict fixtures, finishes and features not supplied by G.J. Gardner Homes. Excluded items may include but are not limited to landscaping items such as planter boxes, retaining walls, water features, pergolas, screens, driveways and decorative items such as fencing and outdoor kitchens or barbeques. Photographs may also depict inclusions not forming part of the standard design and which may be subject to additional costs. This design and illustration remains the property of G.J. Gardner Homes and may not be reproduced in whole or in part without written consent. For detailed home pricing, please talk to a New Homes Consultant or visit our website at <https://www.gjgardner.com.au/house-and-land-pricing>. Bendigo Urban Investments Pty Ltd trading as G.J. Gardner Homes - Bendigo. Builders License CDB-U58150.





## House & Land Package

From **\$1,155,545\***

### Allora 300

4 Beds | 2.5 Baths | 2 Cars

**Lot 8 Solera Court, Maiden Gully**

Land Area: 2454 m<sup>2</sup>

Contact **Tim Carnell** on **0466 647 601**

#### Inclusions:

- + Optional Patio
- + Optional BBQ Area
- + Luxury Floorcoverings Throughout
- + Ducted Evaporative Cooling
- + Site Cost Allowance
- + Double Glazed Windows



\* Price listed is indicative only and does not include stamp duty, legal fees or conveyancing costs. Images may depict optional upgrades including fixtures, fencing, landscaping, features, facades, finishes and/or other items which are not included in the stated price. Further information overleaf. For further information, please talk to a New Homes Consultant or visit our website at <https://www.gjgardner.com.au/house-and-land-pricing>.



\* Package price is based on Allora 300 standard floor plan and standard façade (may be smaller than façade shown). Package may be subject to developer's design review panel, council final approval and G.J. Gardner Homes procedure of purchase. Package price excludes stamp duty on land, legal fees and conveyancing costs (including 6 Legal/74189757\_2 transfer of title and searches). Prices are current as of March 5, 2025 and are inclusive of GST. Prices may change without notice. Packages are subject to availability. Package subject to two separate contracts relating to the building and the land respectively. Photographs may depict fixtures, finishes and features not supplied by G.J. Gardner Homes. Excluded items may include but are not limited to landscaping items such as planter boxes, retaining walls, water features, pergolas, screens, driveways and decorative items such as fencing and outdoor kitchens or barbeques. Photographs may also depict inclusions not forming part of the standard design and which may be subject to additional costs. This design and illustration remains the property of G.J. Gardner Homes and may not be reproduced in whole or in part without written consent. For detailed home pricing, please talk to a New Homes Consultant or visit our website at <https://www.gjgardner.com.au/house-and-land-pricing>. Bendigo Urban Investments Pty Ltd trading as G.J. Gardner Homes - Bendigo. Builders License CDB-U58150.





## House & Land Package

From **\$1,241,768\***

### Aspen 330

4 Beds • 2.5 Baths • 2 Cars

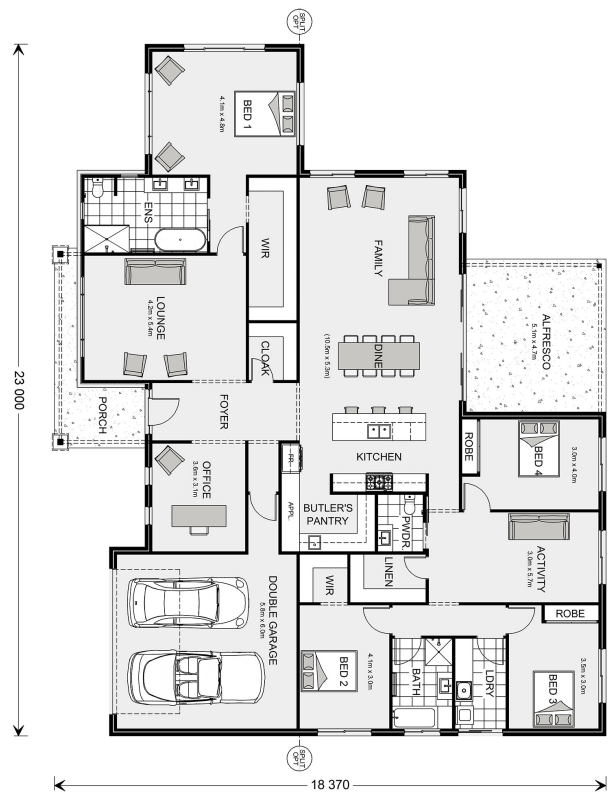
**Lot 9 Solera Court, Maiden Gully**

Land Area: 3508 m<sup>2</sup>

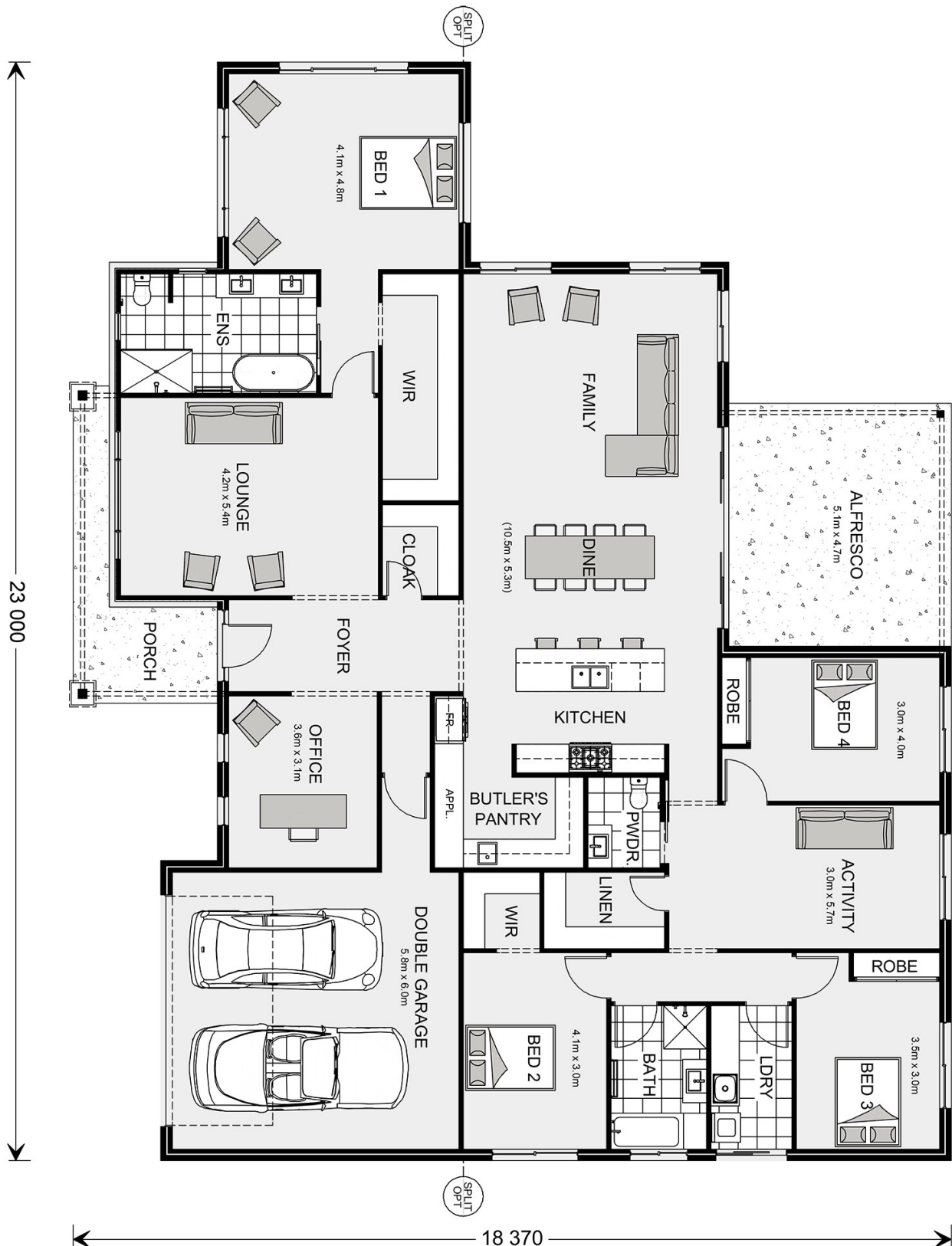
Contact **Tim Carnell** on **0466 647 601**

#### Inclusions:

- + Site Cost Allowance
- + Double Glazed Windows
- + Luxury Flooring Throughout
- + Quality Fittings and Fixtures



\* Price listed is indicative only and does not include stamp duty, legal fees or conveyancing costs. Images may depict optional upgrades including fixtures, fencing, landscaping, features, facades, finishes and/or other items which are not included in the stated price. Further information overleaf. For further information, please talk to a New Homes Consultant or visit our website at <https://www.gjgardner.com.au/house-and-land-pricing>.



\* Package price is based on Aspen 330 standard floor plan and standard façade (may be smaller than façade shown). Package may be subject to developer's design review panel, council final approval and G.J. Gardner Homes procedure of purchase. Package price excludes stamp duty on land, legal fees and conveyancing costs (including 6 Legal/74189757\_2 transfer of title and searches). Prices are current as of March 5, 2025 and are inclusive of GST. Prices may change without notice. Packages are subject to availability. Package subject to two separate contracts relating to the building and the land respectively. Photographs may depict fixtures, finishes and features not supplied by G.J. Gardner Homes. Excluded items may include but are not limited to landscaping items such as planter boxes, retaining walls, water features, pergolas, screens, driveways and decorative items such as fencing and outdoor kitchens or barbeques. Photographs may also depict inclusions not forming part of the standard design and which may be subject to additional costs. This design and illustration remains the property of G.J. Gardner Homes and may not be reproduced in whole or in part without written consent. For detailed home pricing, please talk to a New Homes Consultant or visit our website at <https://www.gjgardner.com.au/house-and-land-pricing>. Bendigo Urban Investments Pty Ltd trading as G.J. Gardner Homes - Bendigo. Builders License CDB-U58150.





## House & Land Package

From **\$1,038,567\***

### Aspen 280

4 Beds | 2.5 Baths | 2 Cars

**Lot 14 Solera Court, Maiden Gully**

Land Area: 1500 m<sup>2</sup>

Contact **Tim Carnell** on **0466 647 601**

#### Inclusions:

- + Optional BBQ Area
- + Ducted Evaporative Cooling
- + Ducted Heating
- + Luxury Floorcoverings throughout
- + Double Glazed Windows
- + Quality Fixtures and Fittings



\* Price listed is indicative only and does not include stamp duty, legal fees or conveyancing costs. Images may depict optional upgrades including fixtures, fencing, landscaping, features, facades, finishes and/or other items which are not included in the stated price. Further information overleaf. For further information, please talk to a New Homes Consultant or visit our website at <https://www.gjgardner.com.au/house-and-land-pricing>.



\* Package price is based on Aspen 280 standard floor plan and standard façade (may be smaller than façade shown). Package may be subject to developer's design review panel, council final approval and G.J. Gardner Homes procedure of purchase. Package price excludes stamp duty on land, legal fees and conveyancing costs (including 6 Legal/74189757\_2 transfer of title and searches). Prices are current as of March 5, 2025 and are inclusive of GST. Prices may change without notice. Packages are subject to availability. Package subject to two separate contracts relating to the building and the land respectively. Photographs may depict fixtures, finishes and features not supplied by G.J. Gardner Homes. Excluded items may include but are not limited to landscaping items such as planter boxes, retaining walls, water features, pergolas, screens, driveways and decorative items such as fencing and outdoor kitchens or barbeques. Photographs may also depict inclusions not forming part of the standard design and which may be subject to additional costs. This design and illustration remains the property of G.J. Gardner Homes and may not be reproduced in whole or in part without written consent. For detailed home pricing, please talk to a New Homes Consultant or visit our website at <https://www.gjgardner.com.au/house-and-land-pricing>. Bendigo Urban Investments Pty Ltd trading as G.J. Gardner Homes - Bendigo. Builders License CDB-U58150.