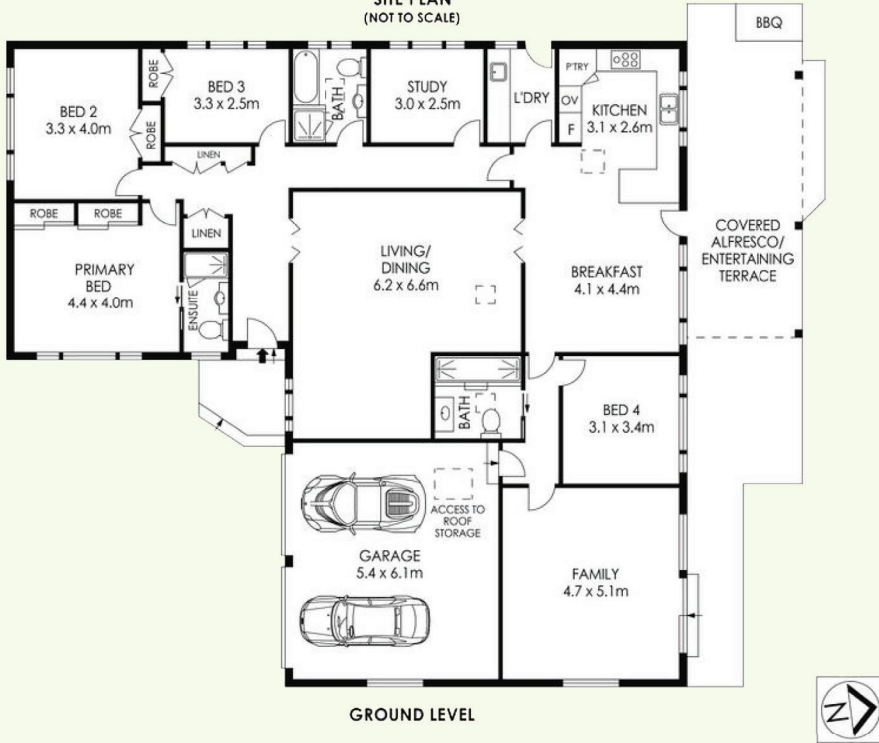


SITE PLAN
(NOT TO SCALE)



GROUND LEVEL

PLANS SHOWN ONLY INDICATIVE OF LAYOUT. DIMENSIONS ARE APPROXIMATE



Spacious Single Level Family Home Renovated And Ready To Enjoy

63 Dorset Drive St Ives

4 3 2

View Sat/Wed 2.15-2.45pm

FOR SALE



63 Dorset Drive, St Ives



Josh Luschwitz 0412 067 676 josh@luschwitz.com.au
Sue Hodges 0423 732 487 sue@luschwitz.com.au

Fully renovated and immaculately presented, this generously proportioned, single level residence is the epitome of easy living and perfect for families and downsizers alike. With a modern four bedroom plus study layout, new flooring throughout and flexible living spaces, the house is ready to move into and enjoy. With an elevated corner position, the approx. 930sqm block features level lawns and pretty, established gardens in tranquil surroundings that are just 750m from the Gordon station bus services and moments to St Ives Village and Stanley street shops. A renovated kitchen, with Miele appliances and Caesarstone benchtop, is perfect for entertaining with the adjoining dining that opens onto the sunlit, paved alfresco area enjoying the ideal rear to North aspect. There are three modern bathrooms, including ensuite from the primary bedroom, as well as a separate laundry. To suit the needs of the modern family there are two separate living rooms, one with direct access to the level, private rear yard. Great storage, ducted air-conditioning, auto garage doors, new double roller blinds and a myriad of other quality inclusions complete this impressive home. For those seeking a turnkey property in this sought after St Ives Public and High School catchment area this is a must view!

