






**Luschwitz**  
REAL ESTATE

## SINGLE LEVEL LIVING IN A TRANQUIL LOCATION

**20 Aurora Drive, Saint Ives Chase**

4  2  2 

**For Sale**



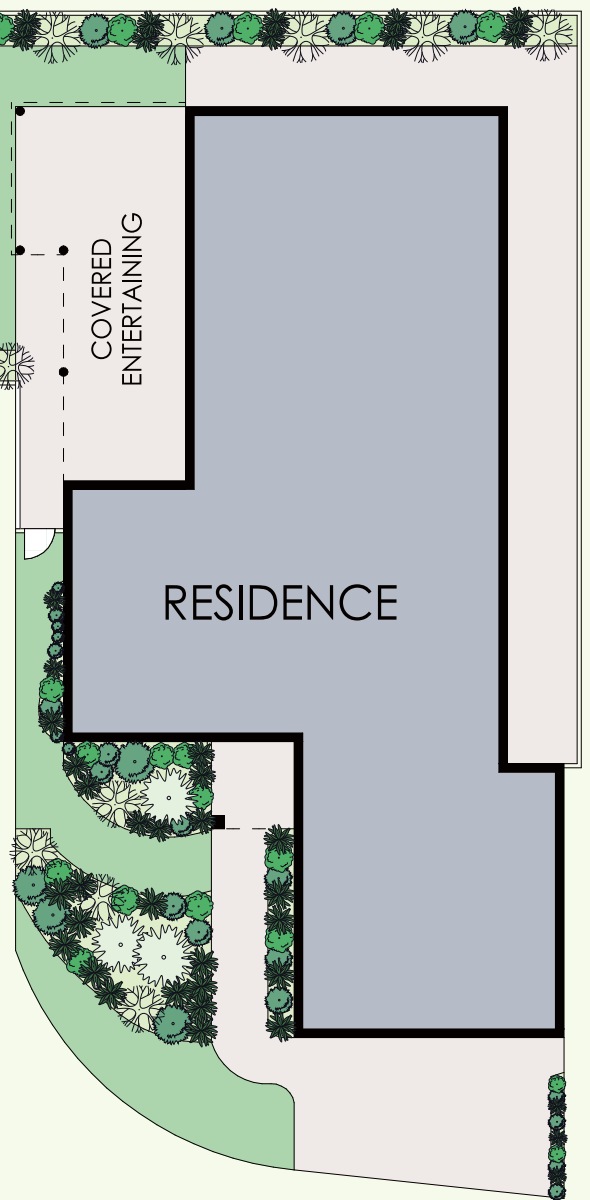
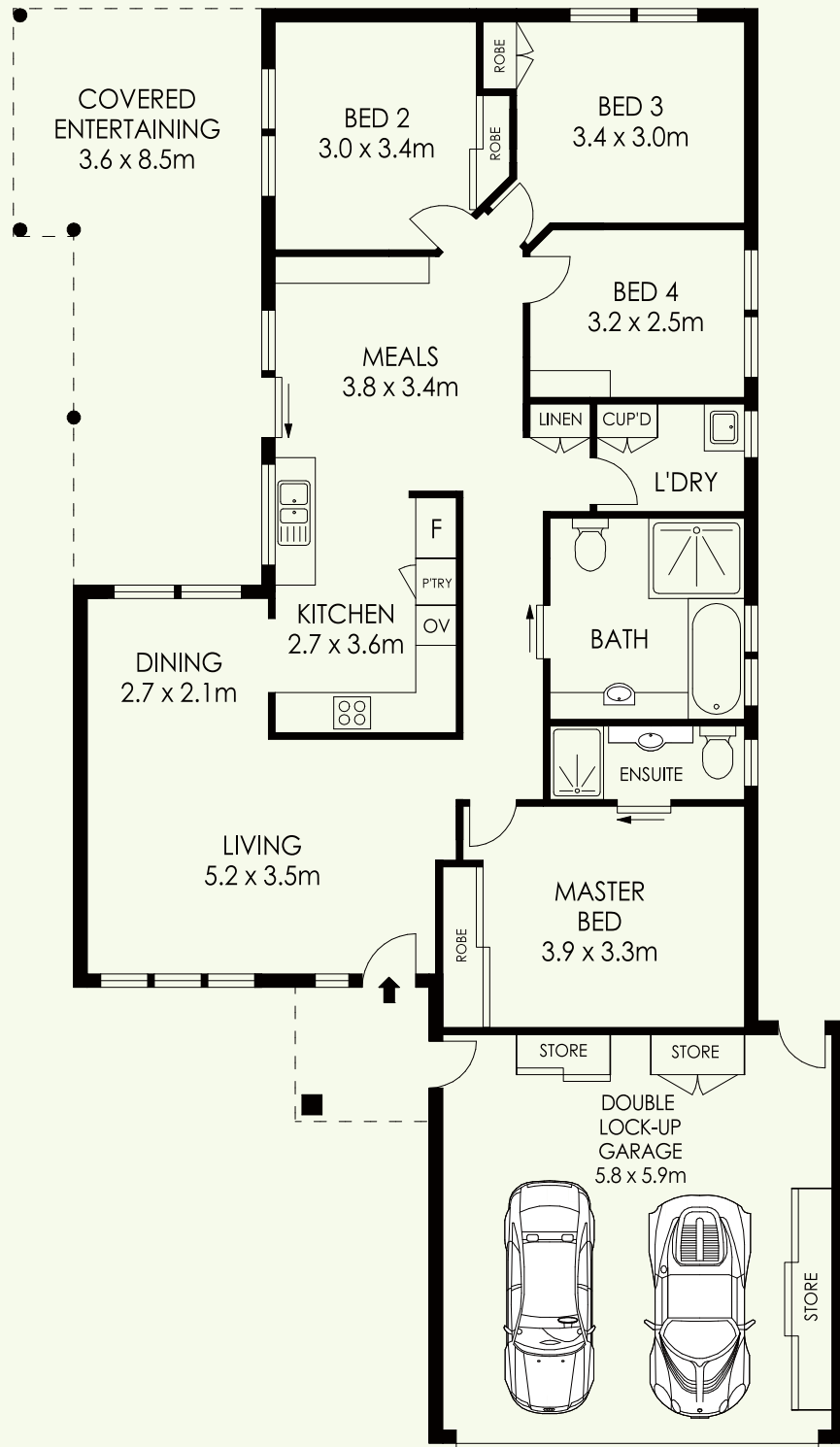
The best position in this exclusive over 55's complex. Quiet cul-de-sac with an enviable northern aspect, private with an easy care garden. Open and spacious with expansive living and dining areas leading seamlessly to private under cover outdoor entertaining and garden area. 4 bedrooms (main with en-suite), plus main bathroom, lovely Kitchen and family area, separate formal lounge and dining nook with R/C air conditioning.

Low maintenance landscaped gardens, double lock up garage with room for storage. Short level stroll to shops, parks and City bus transport. Aurora facilities include large function room & sparkling pool setting.

A rare opportunity. This home offers a comfortable and low maintenance lifestyle for the most discerning buyers.



**Mark Blake 0412 425 676 [mark@luschwitz.com.au](mailto:mark@luschwitz.com.au)**



**SITE PLAN**  
(NOT TO SCALE)

APPROX. RESIDENCE AREA = 153 m<sup>2</sup>

PLANS SHOWN ONLY INDICATIVE OF LAYOUT. DIMENSIONS ARE APPROXIMATE.

**20 Aurora Drive, St. Ives Chase**



**Luschwitz**  
REAL ESTATE

