

FOR SALE



70 Herron Road,
CLOSEBURN

3 1 6 5 acres

Secluded Acreage Haven with picture perfect mountain backdrop

This 3 brm colonial homestead offers a secluded private haven sitting proudly on 5 acres of ex dairy land. Entertain, with a choice of pergola, patio, deck or covered rotunda to relax with a book or host a BBQ for friends, all set amongst lush green gardens and established trees with views to the surrounding mountain ranges.

This property takes full advantage of the natural light that interacts with the homes warm-toned palettes while the full length windows brings the outdoors in. With an increasing desire to get away from it all, live a little more sustainably and yet still be within easy reach of vital amenities, this much-loved home offers a peaceful acreage lifestyle with mod cons; one the whole family can enjoy.

Home

- Same owners for over 40 years
- Built in 1980
- Brick colonial homestead with wrap around verandahs
- Double (cavity) brick
- Raked ceilings with featured Western Red Cedar ceilings
- Full length windows to capture the views
- Split System air conditioning in living room
- Electric stove and hot water
- Sizeable laundry could be covered into a 4th bedroom /office
- Elevated position with mountain and acreage views
- Totally private from neighbouring properties
- Insulated covered entertaining pergola

Property & Grounds

- Quiet Closeburn | Cedar Creek location, set back from road
- 5 acres of ex dairy farm land
- 9.2m x 6.4m Garage and workshop adjoining deep carport
- 13m covered patio joins garaging to the home
- 9m x 6.5m Rear insulated & powered shed with dual high door clearance 2.6m & 3.5m suitable for a caravan or boat.
- 5kw - 24 panel solar system
- 4 Water tanks and dam
- 2 x Vege plots



Contact

Jason Mrak 0413 577 211

jason@sellingbrisbane.com.au

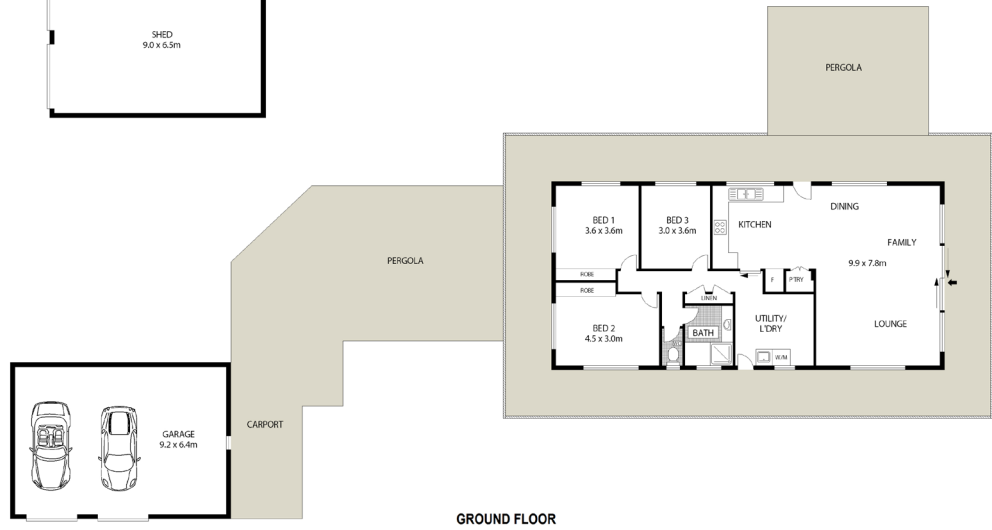


70 HERRON ROAD,
Closeburn



sellingbrisbane.com.au | samfordrealestate.com.au

Selling Brisbane



Lifestyle and Location



Samford Hotel Lifestyle Centre Samford Parklands John Scott Park