



# Luschwitz

SERVING PYMBLE FOR OVER 50 YEARS

## FOR LEASE



### 5 Rushall Street, Pymble



4



3



2



## Bright stylish modern residence In a quiet and convenient location ideal for family living

Private luxury residence basking in natural light with floor to ceiling doors and windows, open plan design and high ceilings. The spacious, designer kitchen and casual living area open to a private, sunny deck and sun drenched pool.

Situated in a prime position, the residence is conveniently located only an easy walk to Pymble Public School and moments from bus and rail transport, local shops and cafes and popular private schools.

#### The Accommodation:

- Entry foyer
- 4 bedrooms (Including two possible primary bedrooms both with en-suites)
- Spacious combined lounge/dining room
- Family Room plus Study
- Gourmet kitchen with extended island bench
- Stainless steel appliances including dishwasher
- North facing alfresco entertaining
- Private pool and expansive manicured gardens
- Auto double lock up garage
- Auto Security Gate
- Beautiful polished timber floors
- Reverse Cycle Air Conditioning

Price : \$1850 per week  
View : as advertised of by appt

- Available now
- Lease term: 12 months to start
- Pool & garden maintenance included
- Sorry no pets are allowed

#### The location:

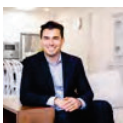
- 300m 4 minute walk to Pymble Station Bus
- 400m 5 minute walk to Pymble Public School
- 850m 11 minute walk to Princes Street local shops
- 1.7km 23 minute walk Pymble Station
- 1.7km 23 minute walk Pymble Shopping Village
- 2.3km Pymble Ladies College
- 5.3km Ku-ring-gai High School
- Sydney CBD 30 minute drive (24.2 km) via M1 and A3

### tApp **Apply Online:**



Scan this QR code with your phone or enter the following into your browser:

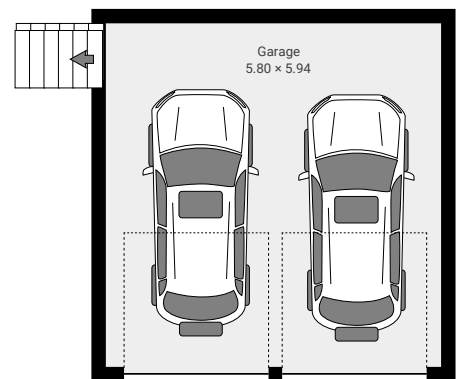
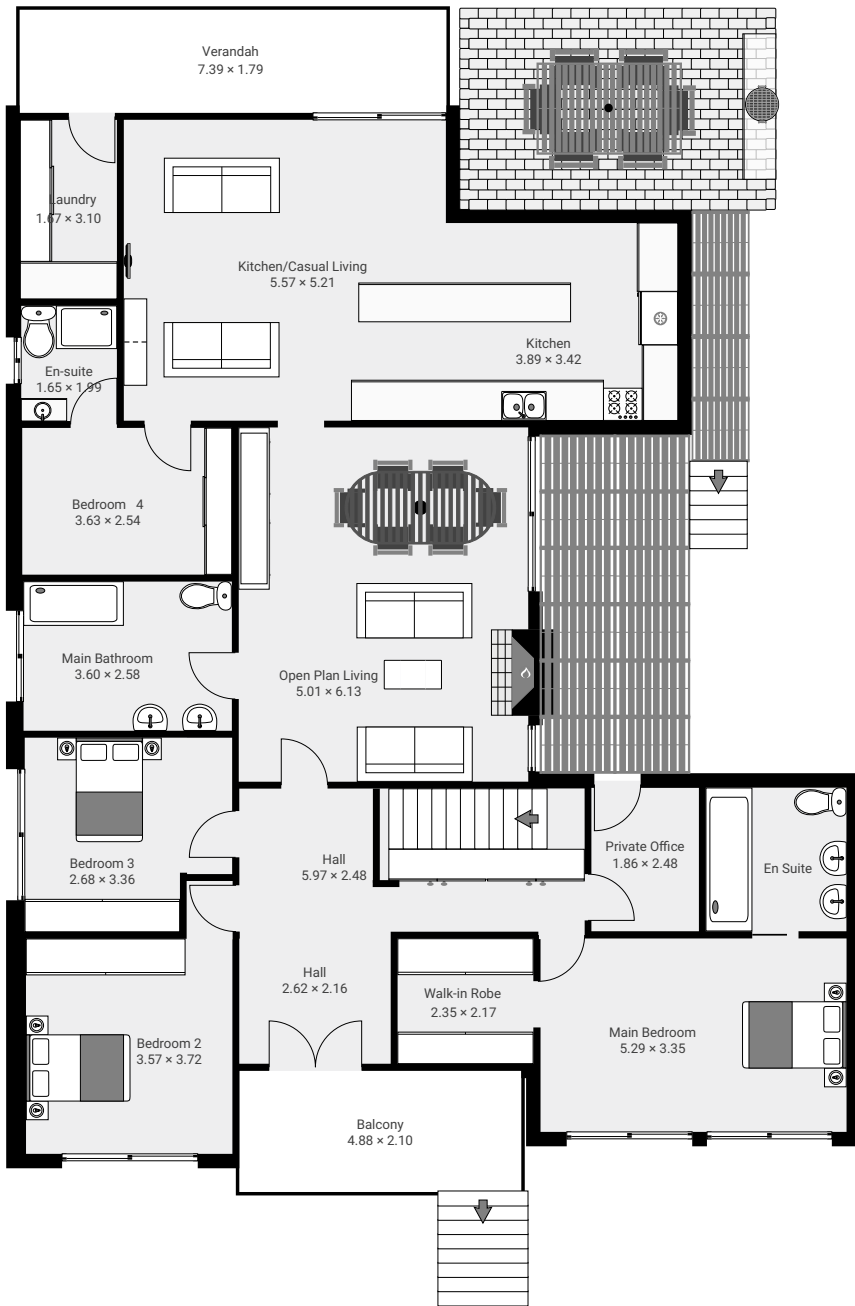
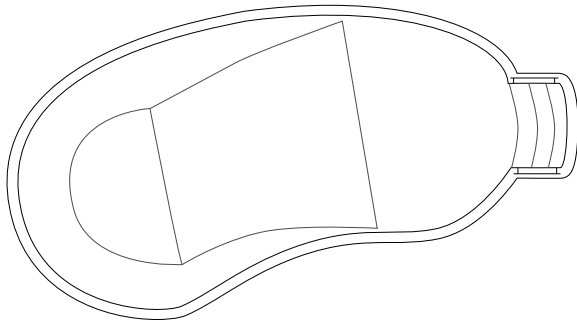
<https://t-app.com.au/luschwitz>



Josh Luschwitz  
josh@luschwitz.com.au  
Bus 9449 5511 Mobile 0431 455 717



Leasing Team  
leasing@luschwitz.com.au  
Mobile 0412 224 319



Land: 1800m2  
Residence: 350m2

Plans are intended as a guide only. No representations or warranties of any nature whatsoever are given or intended and any person using this information should always rely on their own enquiries. j interiors - real estate floor plans. jinteriors.info@gmail.com

**5 Rushall Street, Pymble**

**scale 1:150**