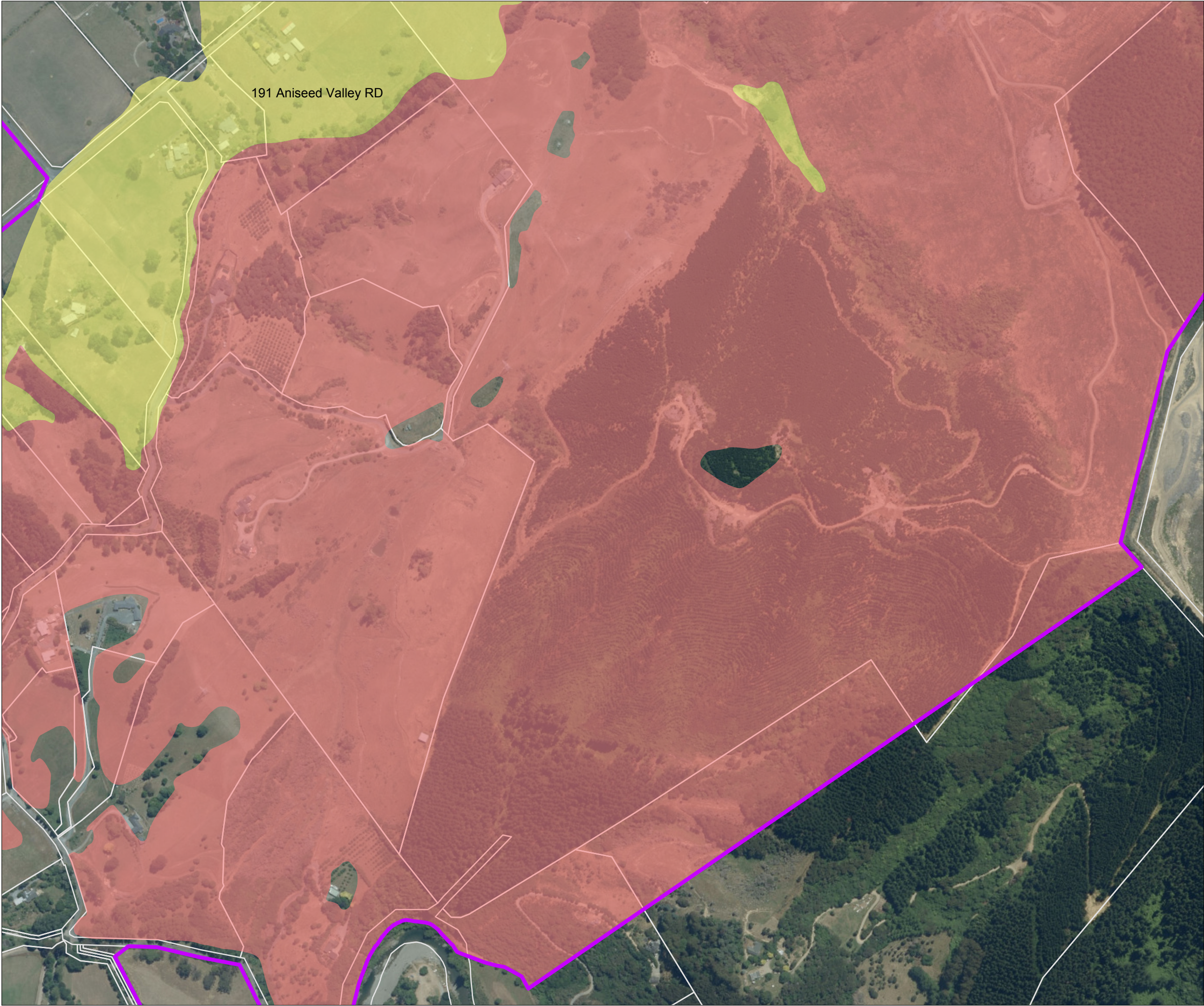


File: P:\3163160084\TGI01_Map\LDAR_Addition\GIS_3160084_TDC_SlopeInstability_Report\Maps.aprx Author: BDJ2 Date: 1/07/2021
GIS@beca.com



Richmond Slope
Instability Susceptibility Area

Map: D2

Page 12 of 15

Legend

Study Areas

NZ Property Titles

Slope Instability Susceptibility Areas

Areas potentially susceptible to slope instability

Areas potentially susceptible to debris run out

A4

A5

B2

B3

B4

B5

C2

C3

C4

D1

D2

D3

E1

E2

This map contains data derived in part or wholly from sources other than Beca, and therefore, no representations or warranties are made by Beca as to the accuracy or completeness of this information.
Map intended for distribution as a PDF document
Scale may be incorrect when printed.
Contains information sourced from LINZ, Crown Copyright Reserved.
Contains Data sourced from Tasman District Council.
Aerials Sourced from the LINZ Data Service and licensed for re-use under the Creative Commons Attribution 4.0 New Zealand licence, Land Information New Zealand, Eagle Technology

Map Scale @ A3 1:5,000

0

100

200

Metres

Revision	Author	Verified	Approved	Date	<div><div></div><div>N</div></div>
2	BDJ2	RR	DC	28/05/2021	
1	BDJ2	DRAFT	DRAFT	09/04/2021	

Client

Tasman District Council

Discipline:

GIS

Project

TDC Slope Instability Mapping

Drawing No:

GIS-3160084-01a-D2

Beca