



Luschwitz
SERVING PYMBLE FOR OVER 50 YEARS

FOR LEASE



16 Latona Street, Pymble



5



3



2

Designer residence nestled in quiet cul-de-sac location

Stunning, designer residence is nestled on a superb, private and level garden block at the end of a tightly held cul-de-sac.

You will be immediately impressed by the wide central hallway, with selected ceramic tiled floor, leading to the vast, open plan living space with soaring double height ceilings and perfect flow to the alfresco entertaining and sparkling swimming pool. The home features a generous and flexible floor plan offering ample space for the modern family to entertain and enjoy.

The Accommodation:

- Five bedrooms
- Three bathrooms
- Double lock up garage with auto door
- Primary suite with grand en-suite bathroom and walk-in robe on ground floor
- Sleek kitchen with Caesarstone bench tops, stainless steel appliances
- Expansive Island breakfast bar for casual meals plus walk-in pantry
- Separate Media and Activity rooms.
- Internal access to Laundry/Utility room
- Fully landscaped and established gardens with feature wrap around pool

The location:

- 230m 3 minute walk Gordon station bus
- 950m 12 minute walk to West Pymble Shopping Centre and cafes
- 1km 13 minute walk Bicentennial Park and the Aquatic Centre
- 1.1km 15 minute walk to Pymble Ladies College
- 1.5km Gordon West Public School catchment area
- 3.1km Turramurra High School catchment area

Price : \$2,400 per week
View : as advertised of by apt

- Available from 19 December 2022
- Lease term: 12 months to start
- Pool maintenance provided (chemicals charged to the tenant)
- Garden maintenance provided. Sorry no pets are allowed



Apply Online: <http://www.bit.ly/luschwitz>

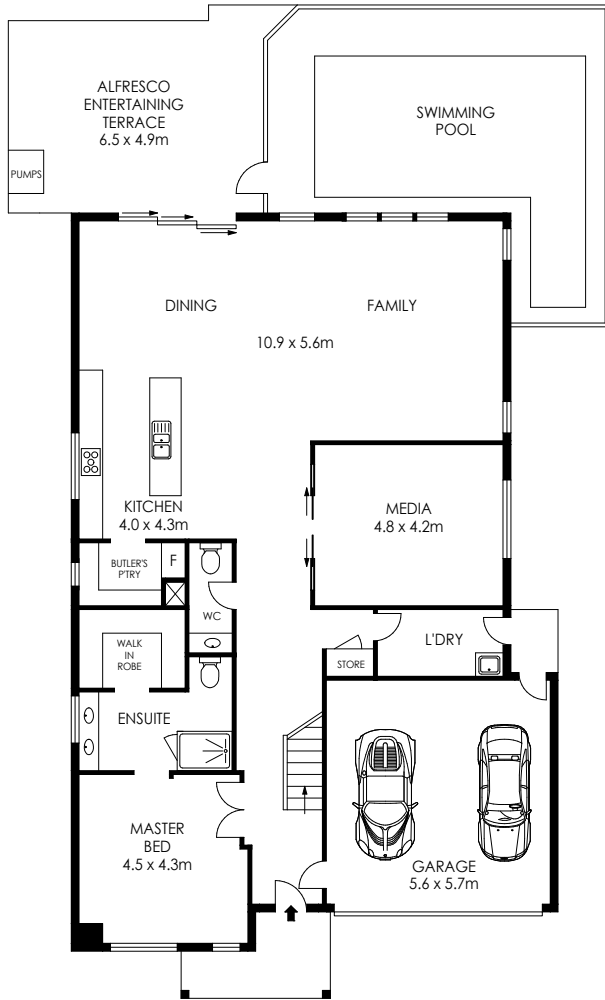
(Follow the steps on the website and attach documents where required)



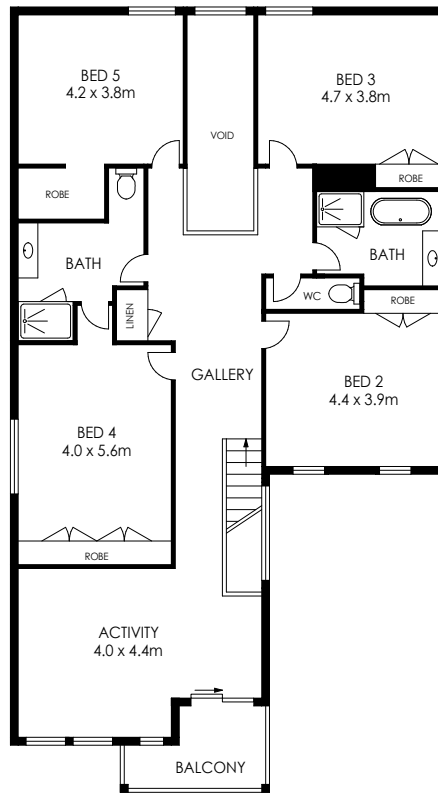
Josh Luschwitz
josh@luschwitz.com.au
Bus 9449 5511 Mobile 0431 455 717



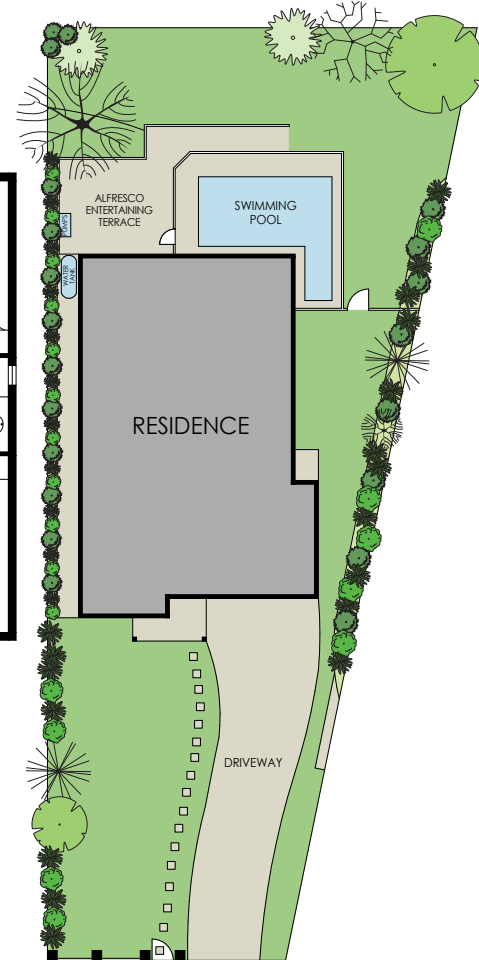
Leasing Team
leasing@luschwitz.com.au
Mobile 0431 455 717 Mobile 0431 455 717



GROUND FLOOR



FIRST FLOOR



**SITE PLAN
(NOT TO SCALE)**

RESIDENCE = 392 m²
 LAND SIZE = 1170 m²

PLANS SHOWN ONLY INDICATIVE OF LAYOUT. DIMENSIONS ARE APPROXIMATE.

