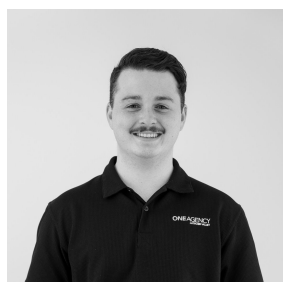




## 6 BROOKES STREET TRARALGON VIC 3844

Prepared on 13th March 2025



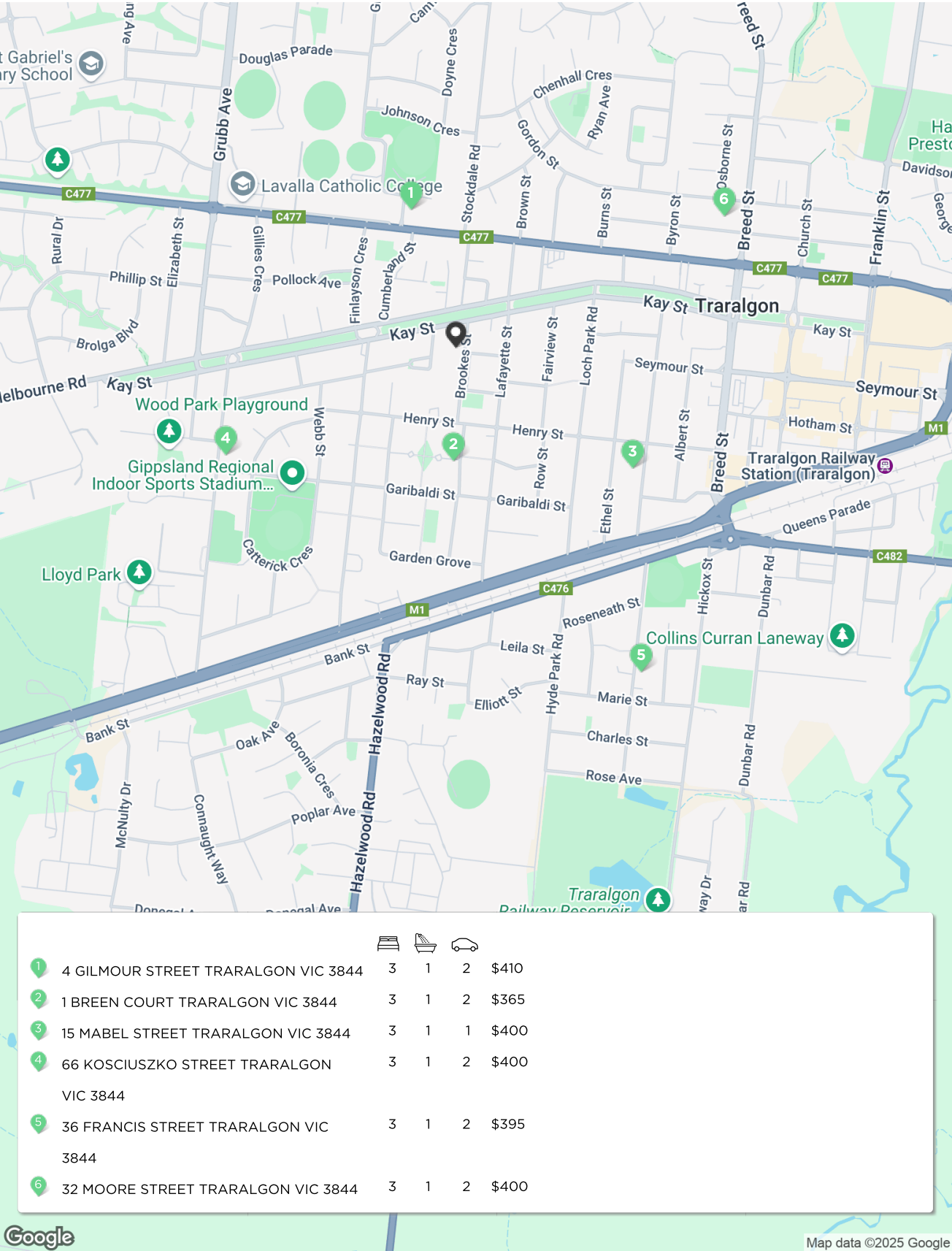
**Josh Quigley**  
**ONE AGENCY LATROBE VALLEY**

14C Hotham Street  
Traralgon VIC 3844

m: 0477122366  
w: 51742740  
[josh@oneagencylv.com.au](mailto:josh@oneagencylv.com.au)



# Comps Map: Rentals



\* This data point was edited by the author of this CMA and has not been verified by CoreLogic

# Comparable Rentals

## 1 4 GILMOUR STREET TRARALGON VIC 3844



3 1 2 735m<sup>2</sup> 89m<sup>2</sup>  
 Year Built 1950 DOM 30 days  
 Listing Date 11-Feb-25 Distance 0.44km  
 Listing Price \$410 PW / AVAIL. 14.03.2025

## 2 1 BREEN COURT TRARALGON VIC 3844



3 1 2 603m<sup>2</sup> 145m<sup>2</sup>  
 Year Built - DOM 28 days  
 Listing Date 19-Nov-24 Distance 0.36km  
 Listing Price \$365 PW/ AVAIL. 13.12.24

## 3 15 MABEL STREET TRARALGON VIC 3844



3 1 1 773m<sup>2</sup> 122m<sup>2</sup>  
 Year Built - DOM 10 days  
 Listing Date 02-Oct-24 Distance 0.67km  
 Listing Price \$400 per week

## 4 66 KOSCIUSZKO STREET TRARALGON VIC 3844



3 1 2 761m<sup>2</sup> 130m<sup>2</sup>  
 Year Built 1970 DOM 26 days  
 Listing Date 30-Sep-24 Distance 0.78km  
 Listing Price \$400 per week

## 5 36 FRANCIS STREET TRARALGON VIC 3844



3 1 2 784m<sup>2</sup> 129m<sup>2</sup>  
 Year Built - DOM 21 days  
 Listing Date 12-Feb-25 Distance 1.16km  
 Listing Price \$395.00 per week

DOM = Days on market \* This data point was edited by the author of this CMA and has not been verified by CoreLogic

# Comparable Rentals



32 MOORE STREET TRARALGON VIC 3844



3

1

2

808m<sup>2</sup>

-

Year Built

-

DOM

26 days

Listing Date

13-Jan-25

Distance

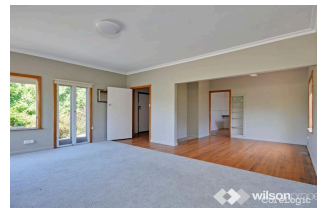
0.92km

Listing Price

\$400 per week

# Summary

**6 BROOKES STREET TRARALGON VIC 3844**



## Appraisal price range

\$380 - \$410

## Notes from your agent

## Disclaimer

---

The State of Victoria owns the copyright in the Property Sales Data and reproduction of that data in any way without the consent of the State of Victoria will constitute a breach of the Copyright Act 1968 (Cth). The State of Victoria does not warrant the accuracy or completeness of the Property Sales Data and any person using or relying upon such information does so on the basis that the State of Victoria accepts no responsibility or liability whatsoever for any errors, faults, defects or omissions in the information supplied.

The Appraisal Amount contained in the report may have been manually provided by the Agent; or may be based on an automated valuation model estimate provided by CoreLogic ('AVM Estimated Value'). AVM Estimated Values are current at the date of the publication only. It is computer generated and is not a professional appraisal of the subject property and should not be relied upon in lieu of appropriate professional advice. The accuracy of the methodology used to develop the AVM Estimated Value, the existence of the subject property, and the accuracy of the AVM Estimated Value and all rule sets provided are estimates based on available data and are not guaranteed or warranted. CoreLogic excludes all liability for any loss or damage arising in connection with the Appraisal Amount and/or AVM Estimated Value.

Whilst all reasonable effort is made to ensure the information in this publication is current, CoreLogic does not warrant the accuracy or completeness of the data and information contained in this publication and to the full extent not prohibited by law excludes all for any loss or damage arising in connection with the data and information contained in this publication.