



Luschwitz
REAL ESTATE

“Harrington” - Position - Position - Position!

“Harrington” 26/10-12 Ray St Turramurra



View: As advertised or by prior appointment

For Sale:

WOW. This is special. By far the best in the building. Top floor with the perfect sunny aspect and a wonderful outlook. “Harrington” is a beautifully cared for building nestled in a picturesque landscaped garden close to the rail, shopping and all Schools. The convenience is very rare to experience.

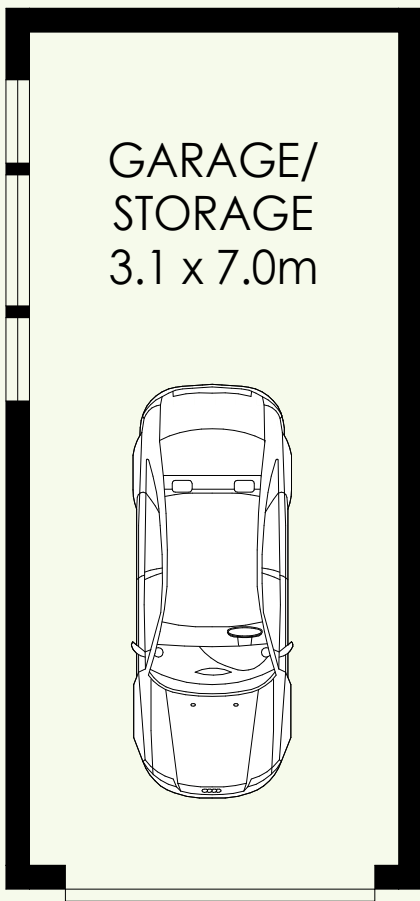
This spacious apartment excels. Light bright and a very happy space. Fabulous lounge and dining, massive open plan Kitchen and excellent bathroom. Add to this you have a massive lock-up garage..

Be the first to inspect this very impressive apartment

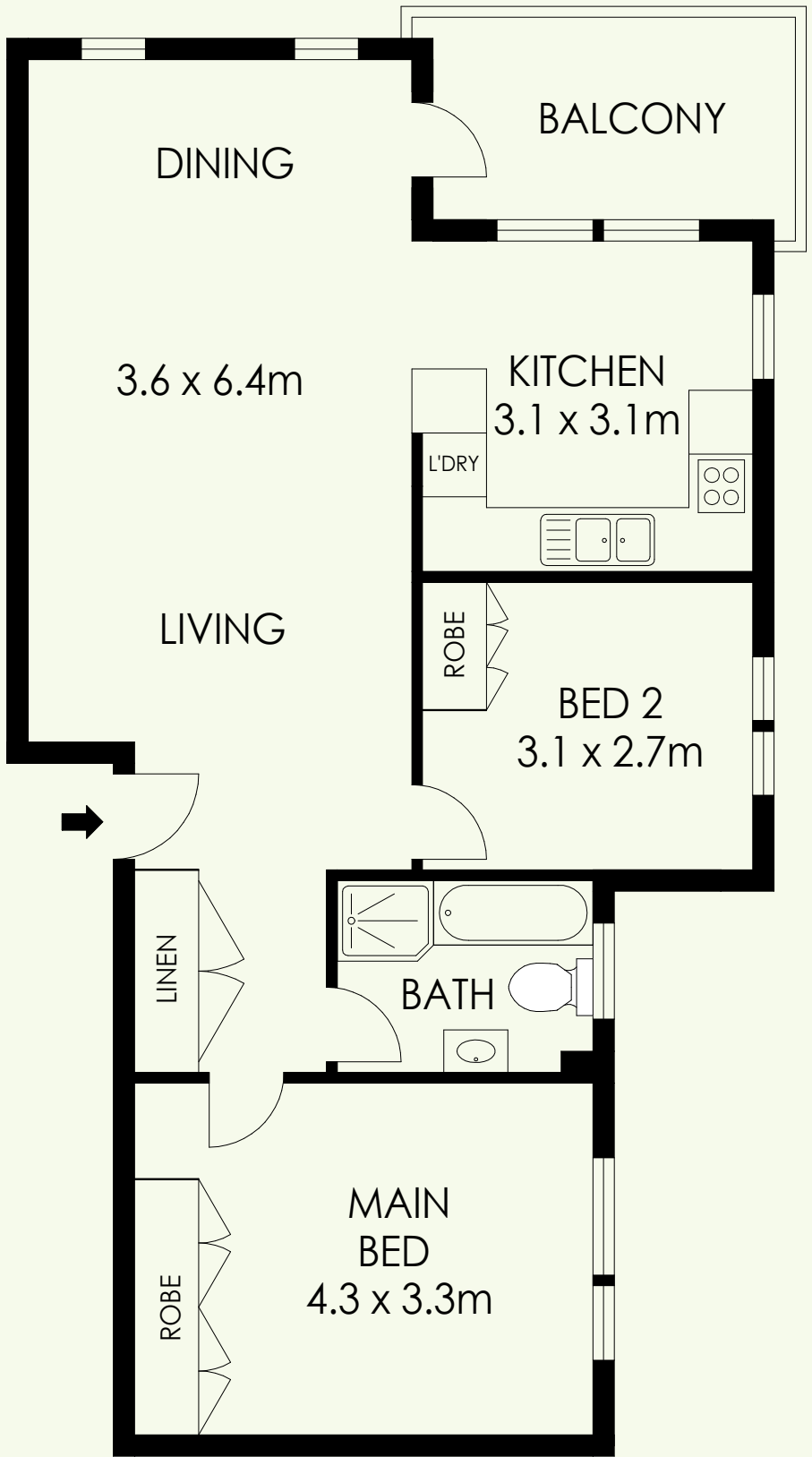
Don't miss your chance to craft your dream home and capitalize on this exceptional canvas ripe for renovation.



Mark Blake M0412 425 676 mark@luschwitz.com.au



GROUND LEVEL



LEVEL TWO

APPROX. RESIDENCE AREA = 98 m²



PLANS SHOWN ONLY INDICATIVE OF LAYOUT. DIMENSIONS ARE APPROXIMATE.

"Harrington" 26/10-12 Ray Street, Turramurra
Luschwitz



Luschwitz
 REAL ESTATE